

A panoramic view of the Yokohama skyline across a body of water. The sky is blue with scattered white clouds. In the foreground, the dark blue water of the bay is visible. The middle ground shows a variety of buildings, including several modern skyscrapers and older, lower-rise structures. The background features a dense cluster of high-rise buildings, including the prominent Landmark Tower (Minato Mirai 21 Tower) on the left and the Yokohama Bay Bridge on the right. The overall scene is bright and clear.

**Co-creating Smart City**  
**~ Yokohama Partnership of Resources**  
**and Technologies (Y-PORT) ~**

**ORII Ryoichiro**

**Development Cooperation Department, International Affairs Bureau**

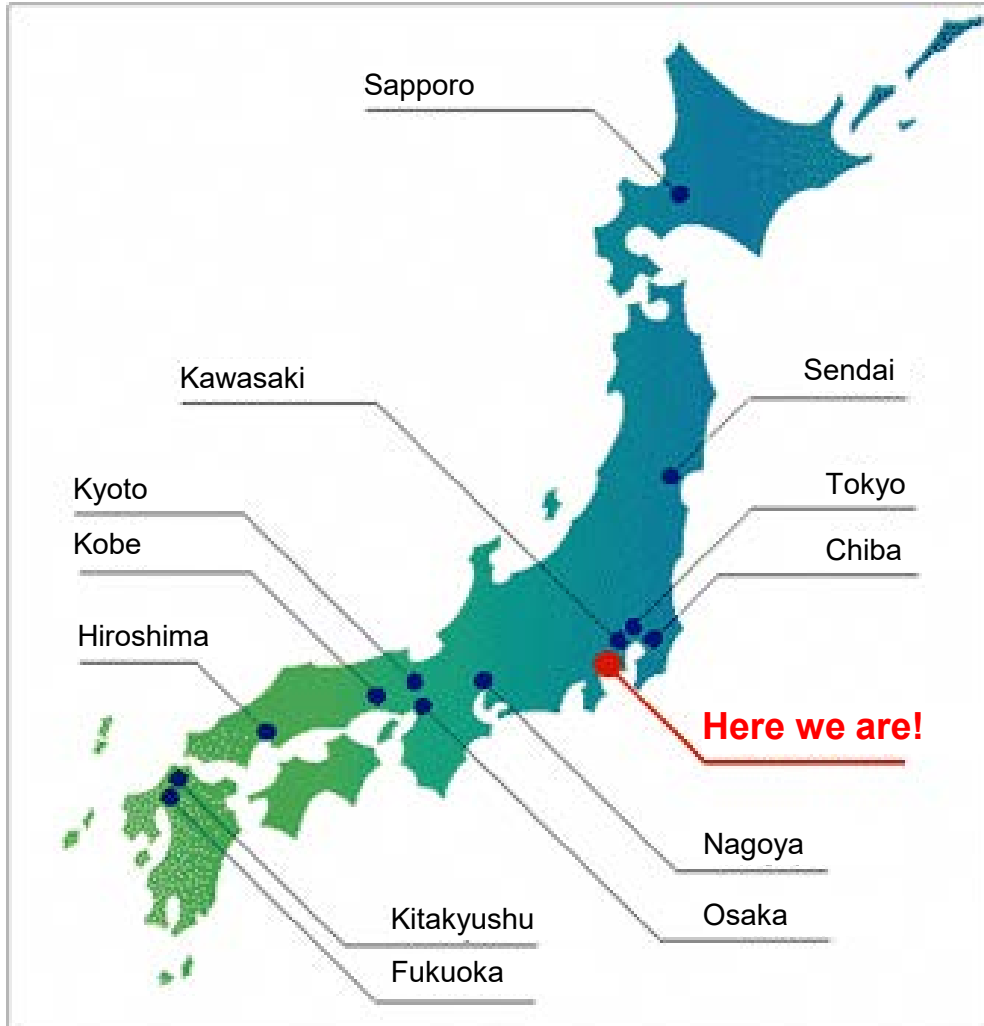
**City of Yokohama**

# Table of Contents

- 1. Introduction of the City of Yokohama and City's unique experiences during population growth**
2. Y-PORT (Yokohama Partnership of Resources and Technologies) Program
3. Conclusion

# Profile of Yokohama

## Location of Yokohama



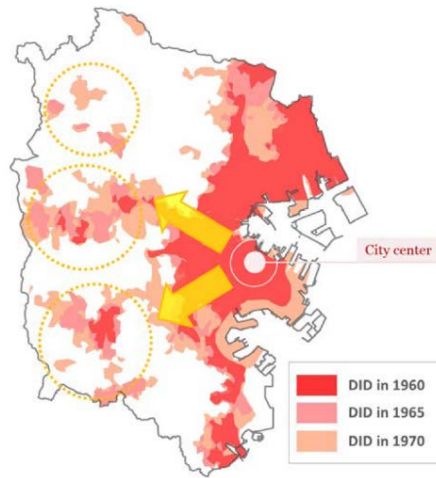
**Population: 3.77 million**

**Households: 1.76 million**

**Area: 437 km<sup>2</sup>**



# History

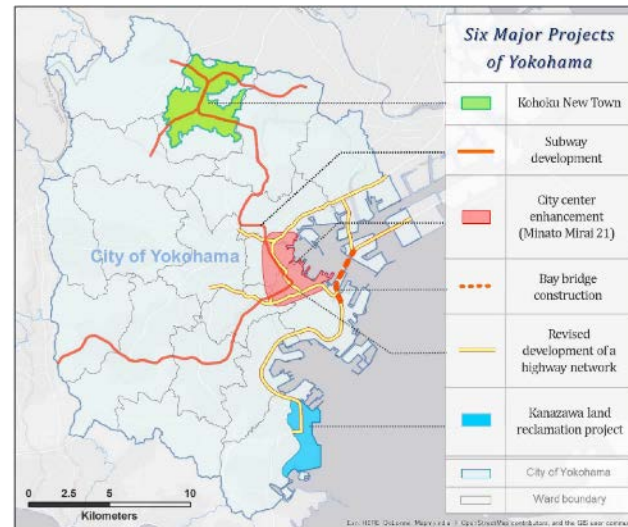
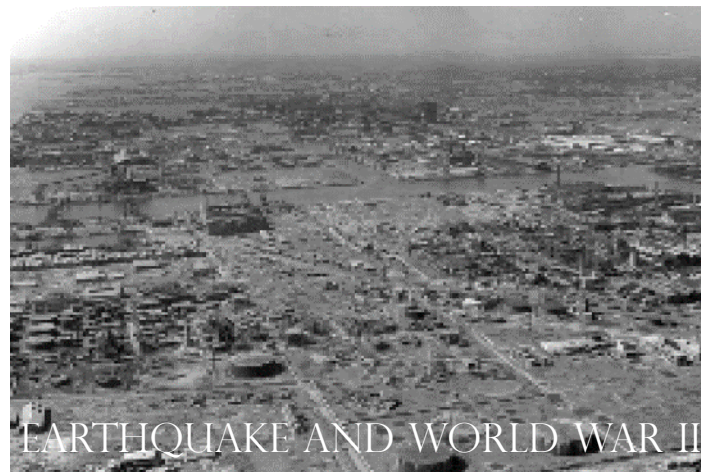


## EXPANSION OF DENSELY INHABITED DISTRICTS

1850S

1945

2020



## FORMULATION OF THE SIX MAJOR PROJECTS

# Challenges Caused by Urbanization

---

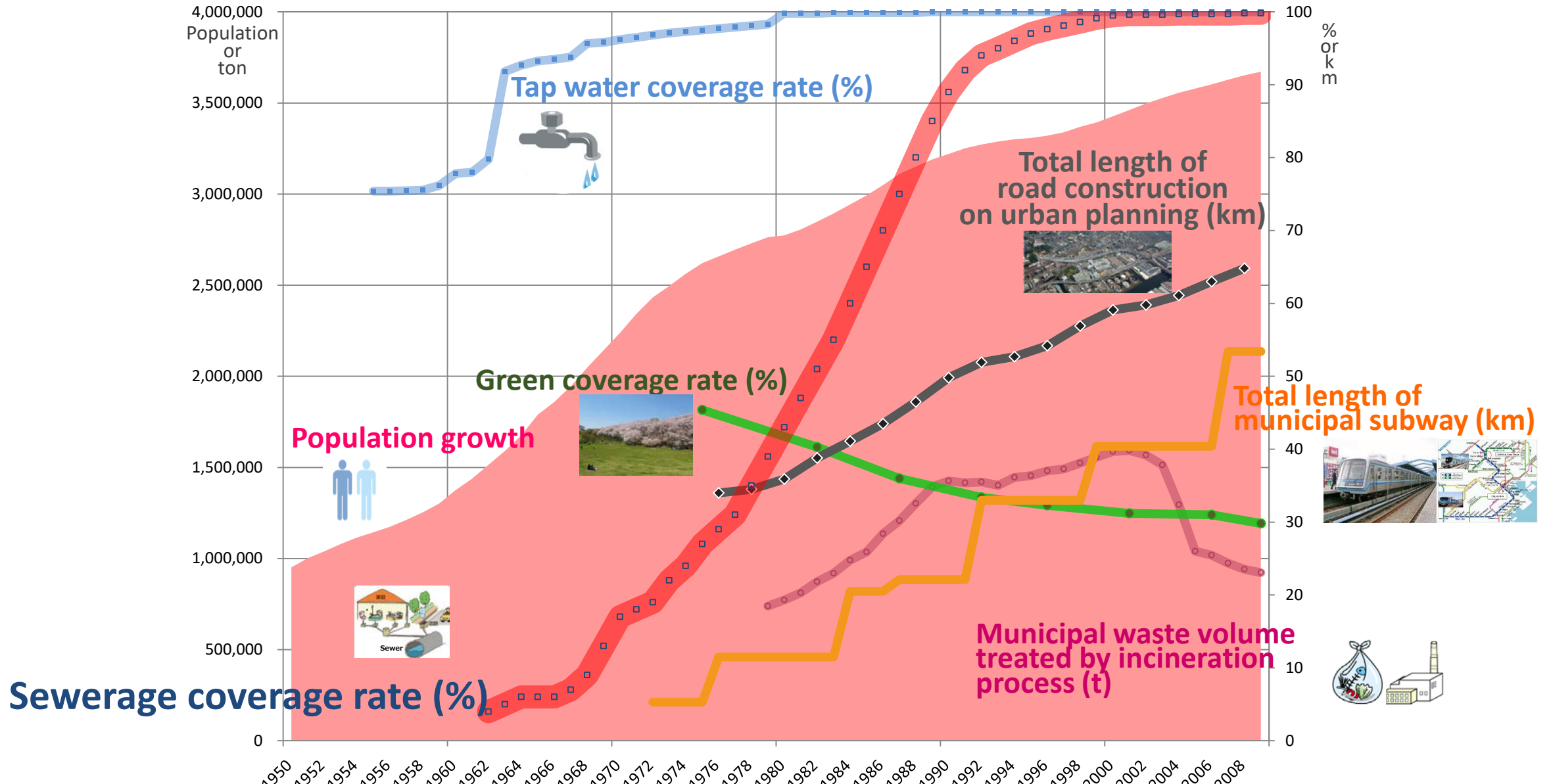


# Recognition as a sustainable smart city

---



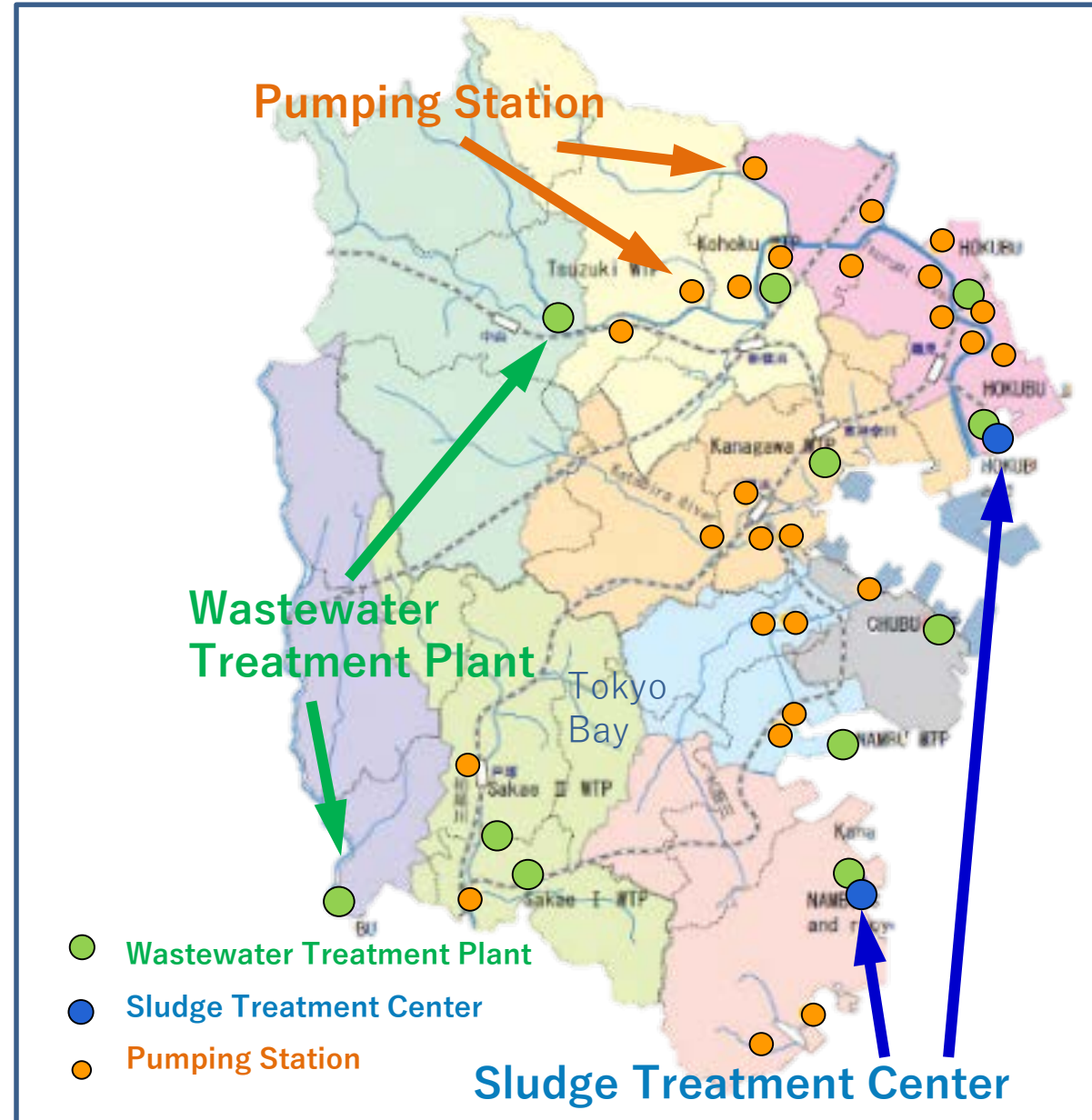
# Key point 1: Long term plan and implementation



# Key point 2: Best Available Solution by enhancing communication

## Current Achievement of Sewerage Facilities

Item	Value
Sewerage Service Rate	99.9%
Treated Wastewater	1.6mil.m <sup>3</sup> /day
WWTP	11 places
STC	2 places
Major Pumping Station	26 places
Total Sewer Length	11,900 km
Diameter < 800mm	10,000km
Diameter >= 800mm	900km

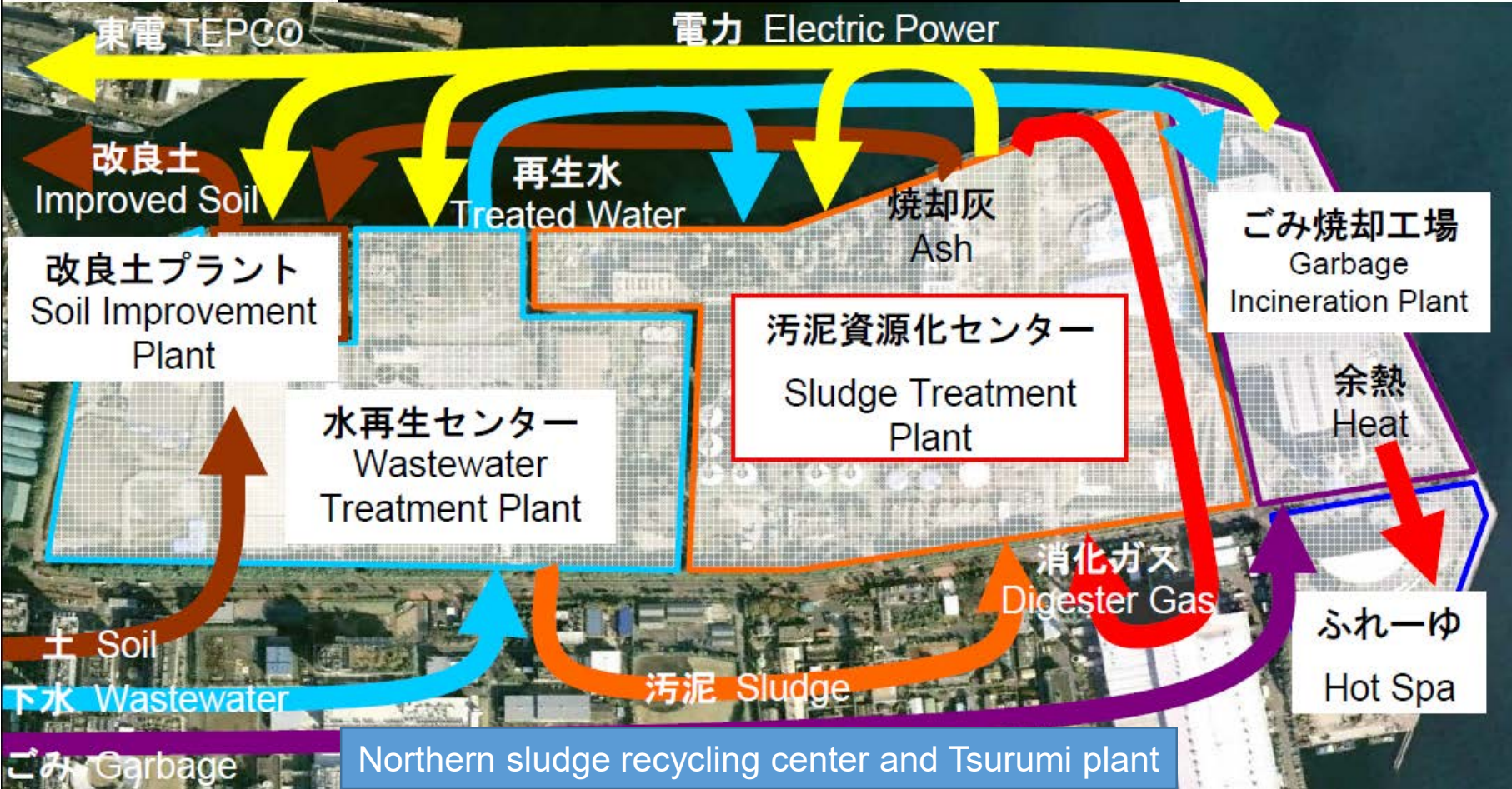




# Key point 2: Best Available Solution by enhancing communication

The northern and southern sludge treatment plants are located close to garbage incineration plants, to make use of power, treated water and digester gas

Incinerating 2,400t/day of sludge at four plants



# Key point 3: Co-creating new smart solution with Public and Private Partnerships

## Effective Utilization of Sewage Sludge



Sludge treatment center



Digestion gas



Power generation using digestion gas



Incinerator ash



Auxiliary fuel for incineration



Improved soil for backfill



Coal alternative fuel



Cement raw material

# Table of Contents

1. Introduction of the City of Yokohama and City's unique experiences during population growth
- 2. Y-PORT (Yokohama Partnership of Resources and Technologies) Program**
3. Conclusion

# Y-PORT Program background and goals

## Yokohama's strengths

### Urban development

### Resources



### Private companies'

### Technologies



## **Y-PORT**

Yokohama Partnership of Resources and Technologies

### 2011 Y-PORT Program launches

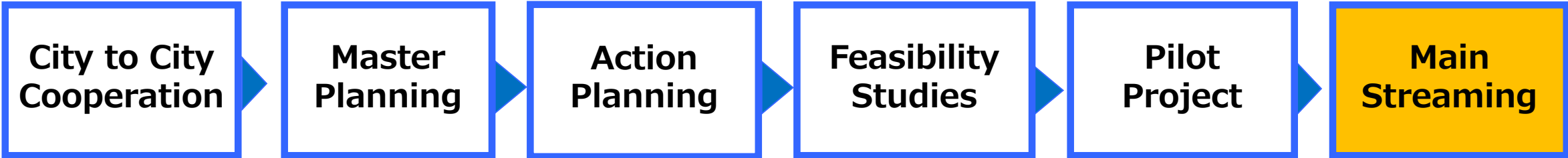
(city-to-city P3 cooperation utilizing Yokohama's resources and technologies)

### Goals

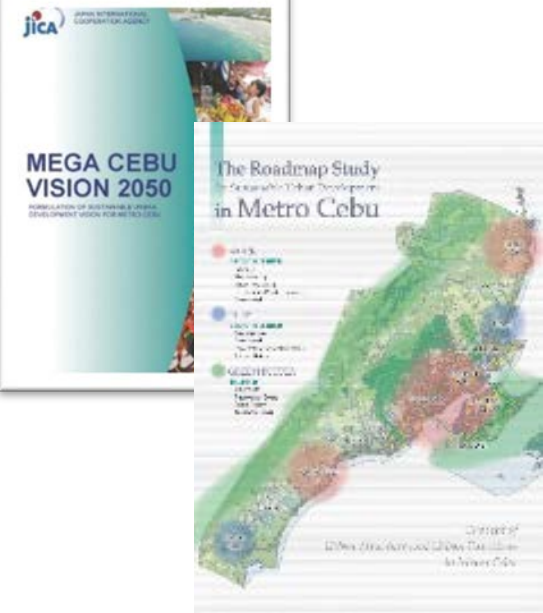
**Promote Yokohama's economy  
(export local businesses)**

**Solve urban issues in emerging cities**

# City to city collaboration toward smart city development



Promote the implementation of technical cooperation and infrastructure development through continuous City to City dialogues



Metro Cebu development vision & roadmap: Formulated with support from Yokohama & JICA



Metro Cebu Urban Development Forum



JICA support for Japanese SMEs' overseas business development (Demonstration test of sludge dewatering system by Amcon Inc., a Yokohama-based SME)



Project for the Septage Management of Metro Cebu Water District: Grant-in-aid through collaboration with local government

# Best Practices with Metro Cebu in waste water treatment

Pilot project of highly efficient sludge dewatering equipment with support of JICA



JICA Grant Aid Project for construction of septic tank sludge treatment plant in Metro Cebu (Covering 220,000 Households)



# Table of Contents

1. Introduction of the City of Yokohama and City's unique experiences during population growth
2. Y-PORT (Yokohama Partnership of Resources and Technologies) Program
- 3. Conclusion**

## • What Y-PORT project offers

*For smart region development with well-being, sustainability, smartness, livelihood, carbon neutrality, etc. in emerging cities*

Following Yokohama's experience would be utilized in emerging cities.

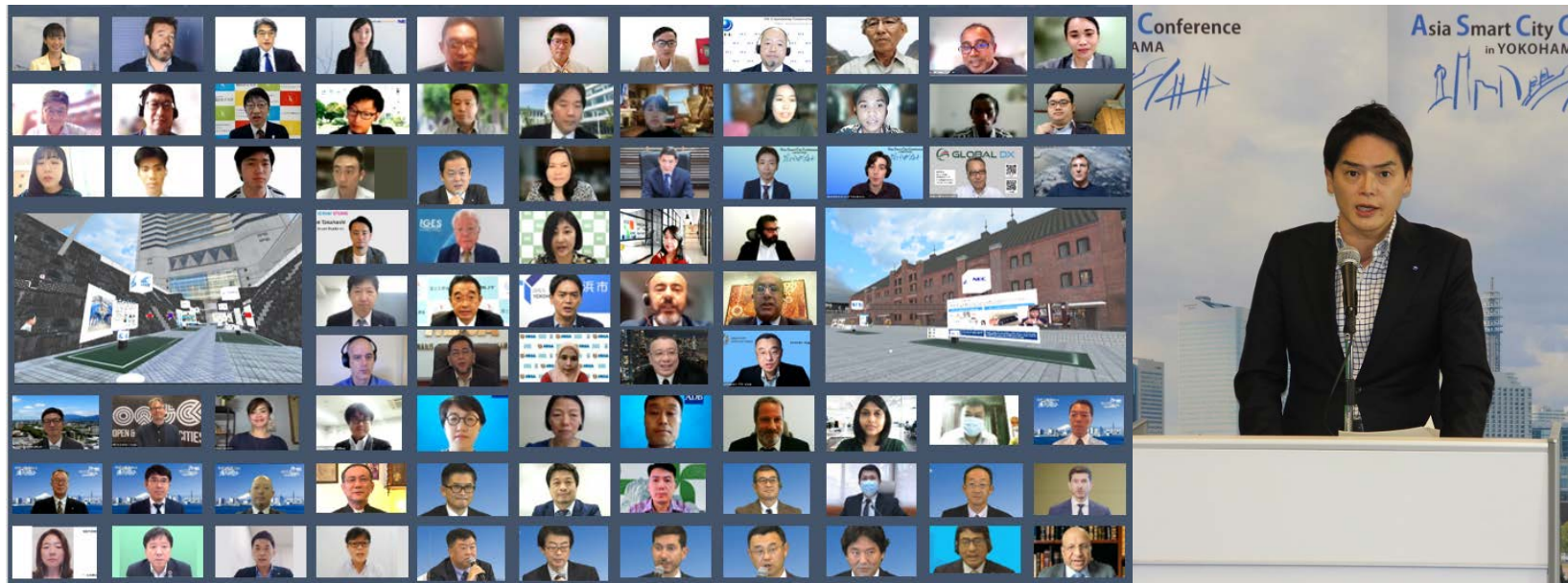
- Long term vision/plan and implementation
- Best available solution by enhancing communication
- Co-creating new smart solution by public and private partnerships





# Notification: 10<sup>th</sup> Asia Smart City Conference

- Held annually since 2012
- The 10<sup>th</sup> ASCC was held on 26<sup>th</sup>-28<sup>th</sup>, Oct 2021
  - Meeting format : Online
  - Number of participants : Approximately 1,400
  - Number of countries participating : 36 countries · regions
  - Number of Speakers : 75
- **Next Event**  
**ASEAN Smart City Webinar, on 10<sup>th</sup> March, 2022**



# Visit our website



**URL: <https://yport.city.yokohama.lg.jp/en>**

## Contact us

**Development Cooperation Division, International Affairs Bureau,  
City of Yokohama**

**E-mail: [ki-yport@city.yokohama.jp](mailto:ki-yport@city.yokohama.jp)**