



Nusantara
National Capital
Authority



NUSANTARA

Indonesia's Smart and Sustainable Forest City

Bambang Susantono, Ph.D.
Chairman, Nusantara Capital Authority

*6th Spatial Planning Platform Conference
Balikpapan, Indonesia – 7 November 2023*

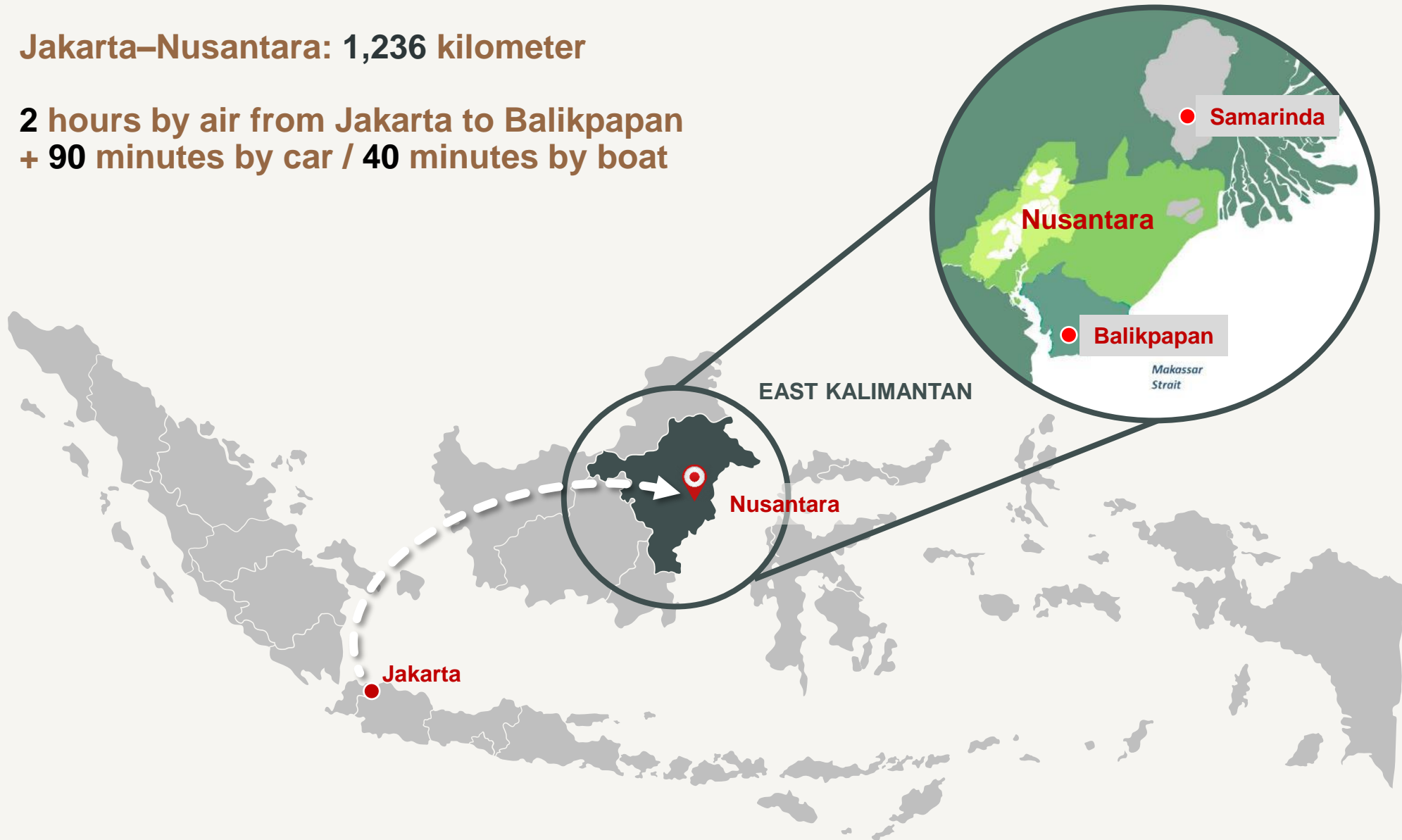




From Jakarta to Nusantara

Jakarta–Nusantara: 1,236 kilometer

2 hours by air from Jakarta to Balikpapan
+ 90 minutes by car / 40 minutes by boat



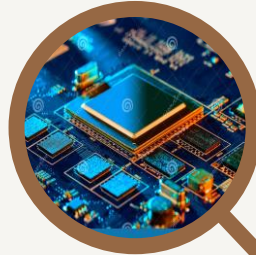


Nusantara as Part of “Indonesia 2045” Vision

1

Human development and technological advancement

Cultivating world-class talents with strong academic and digital foundation



2

Sustainable economic development

Boosting East Kalimantan’s regional GDP up to 3 times by 2045 through economic diversification and transformation



4

Enhancing national resilience and governance

Establishing new regulatory standards supported by investment and innovation



3

Equitable development

Catalyzing eastern Indonesia’s regional GDP and strengthening overall domestic value chain



**INDONESIA
2045**



Nusantara as Indonesia's Active Contribution to Global Campaigns

Biodiversity

Protecting and conserving the Nusantara's biodiversity including those that are endangered through *Nusantara Nature Positive Plan* to ensure wildlife habitat's existence and security.



Climate Change

Nusantara is Indonesia's first city that declares its locally-determined contributions (LDC) and it is instrumental in ensuring its carbon-neutral goal by 2045 and helping to deliver national climate change targets.

Sustainable Development Goals

Nusantara will have its own Voluntary Local Review (VLR) to track SDGs achievements at local level, and accelerate the attainment of UN 2030 Sustainable Development Agenda.



Nusantara's Knowledge Journey: International Collaboration (selected)



Development of Nusantara's smart city masterplan



Business preparation including in education and health sectors



Biodiversity assessment and wildlife protection framework



Tracking Sustainable Development Goals (SGDs) in Nusantara

Stanford | Doerr School of Sustainability

Research collaboration on sustainability



Roadmap to Carbon-Neutral City, Locally-Determined, and Lovable City



Proof of concept for advanced air mobility



Knowledge exchange on developing livable city



Creation of a smart and happy city in Nusantara



Development of science-based climate targets





Nusantara's Alignment with ESG Principles

ENVIRONMENT

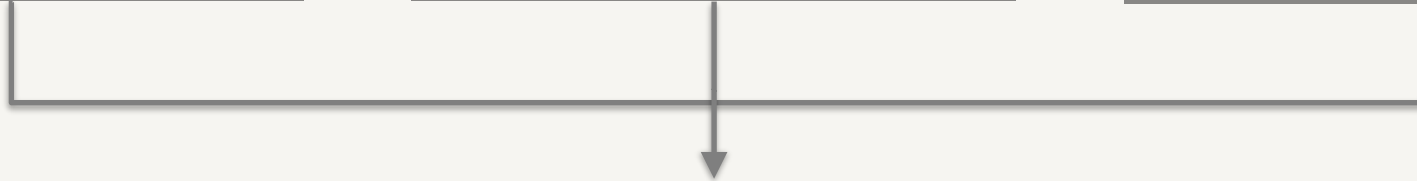
Climate change mitigation and adaptation, pollution control, circular economy, preservation of biodiversity

SOCIAL

Equality, inclusiveness, human and community development, public safety and health

GOVERNANCE

Zero-tolerance to corruption, staff diversity and integrity, healthy working environment



ESG Committee for Nusantara

The Committee helps to align Nusantara's planning and decision-making with ESG principles, enhancing the city's sustainability and credibility.

→ First Indonesia's city to implement ESG standards

Nusantara's Scope of Development and Connectivity

Total Area approx.
(Land and Water)
320,000 Ha

Land Area approx.
252,000 ha

KIKN
Core Urban
Area

56,180 ha

KP-IKN
Buffer Area

199,962 ha

KIPP
Government Core
Area

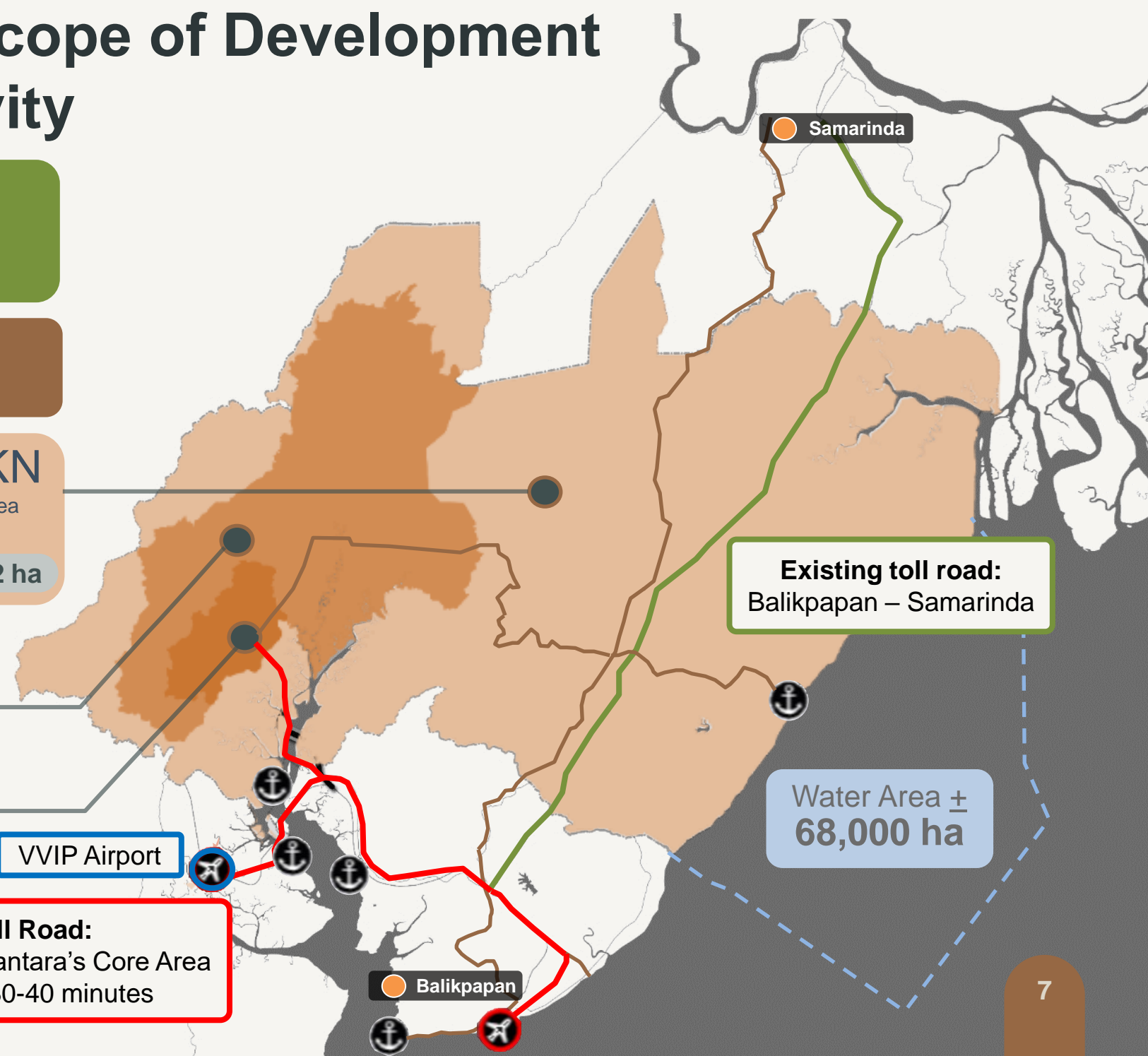
6,671 ha

VVIP Airport

New Toll Road:
Balikpapan – Nusantara's Core Area
Travel time: 30-40 minutes

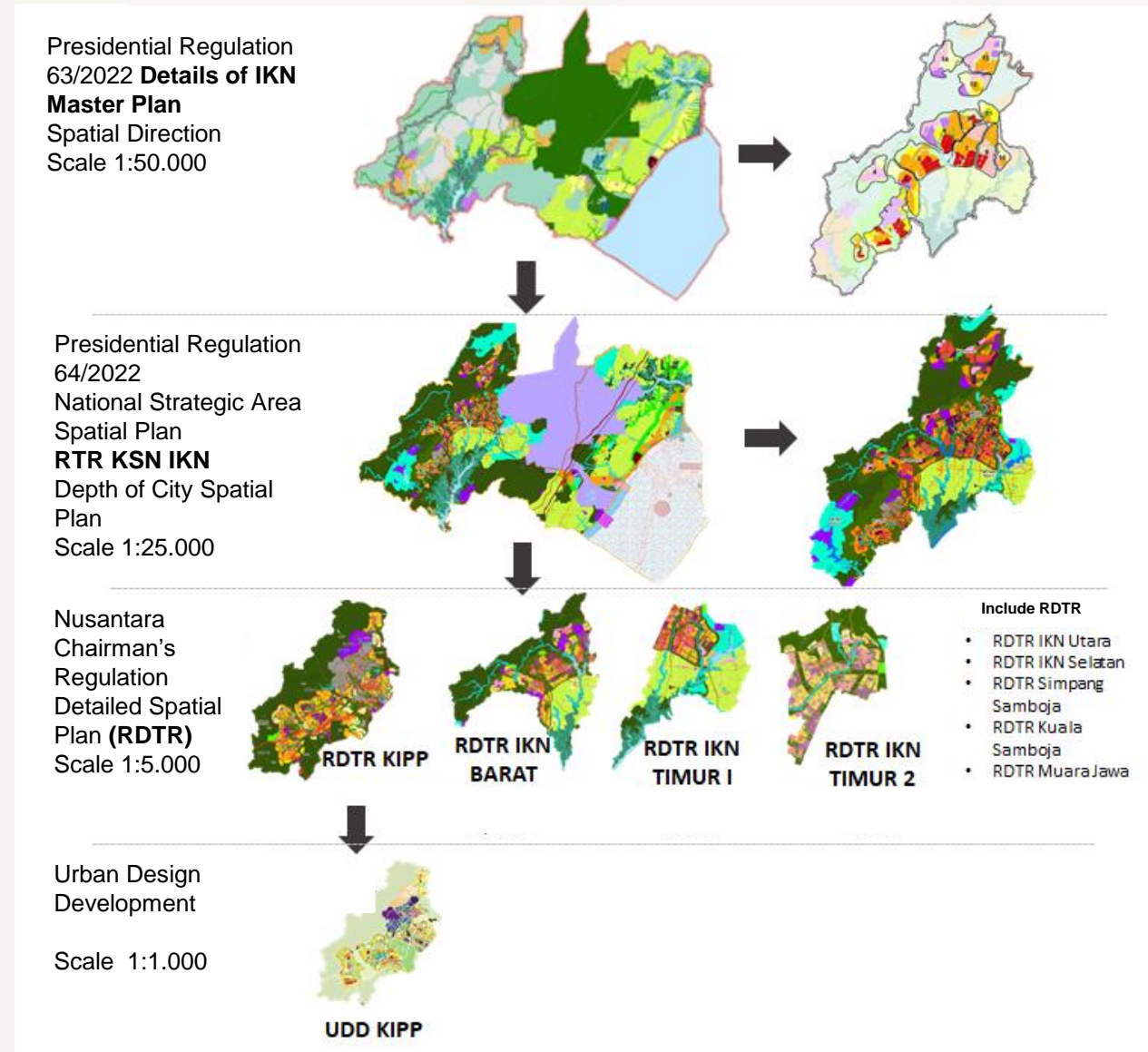
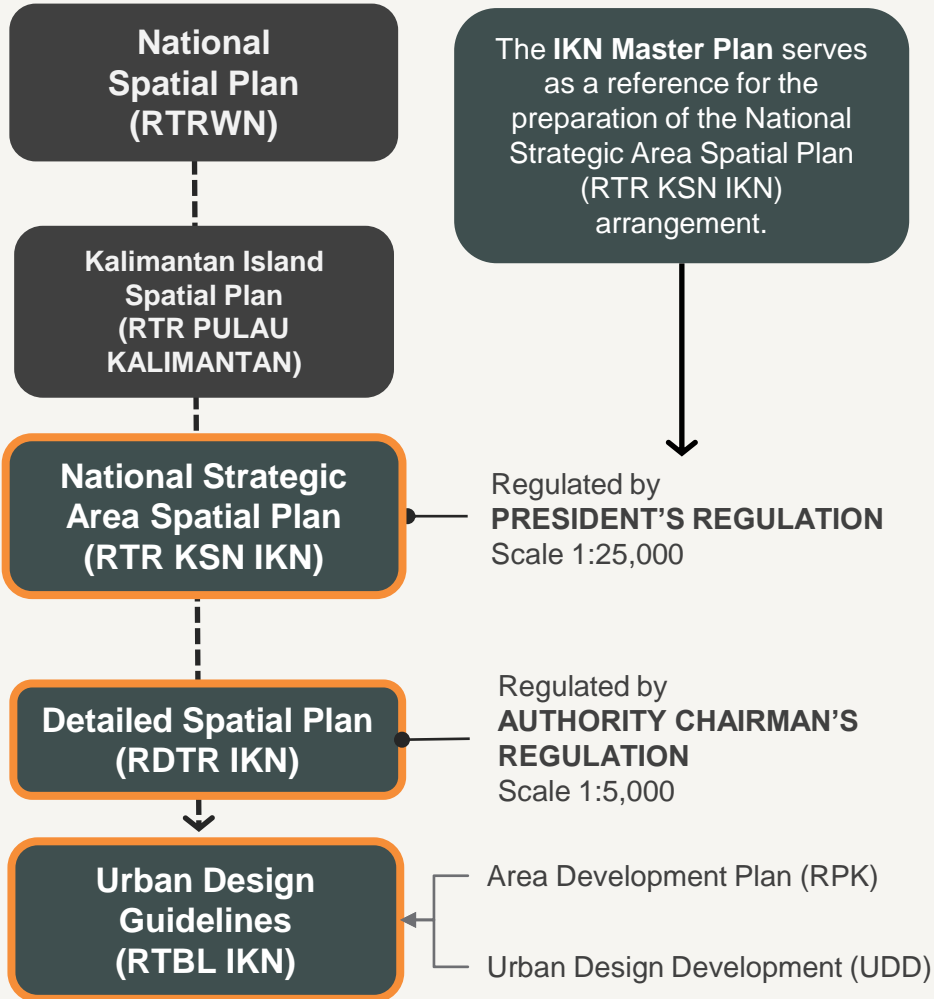
Existing toll road:
Balikpapan – Samarinda

Water Area ±
68,000 ha



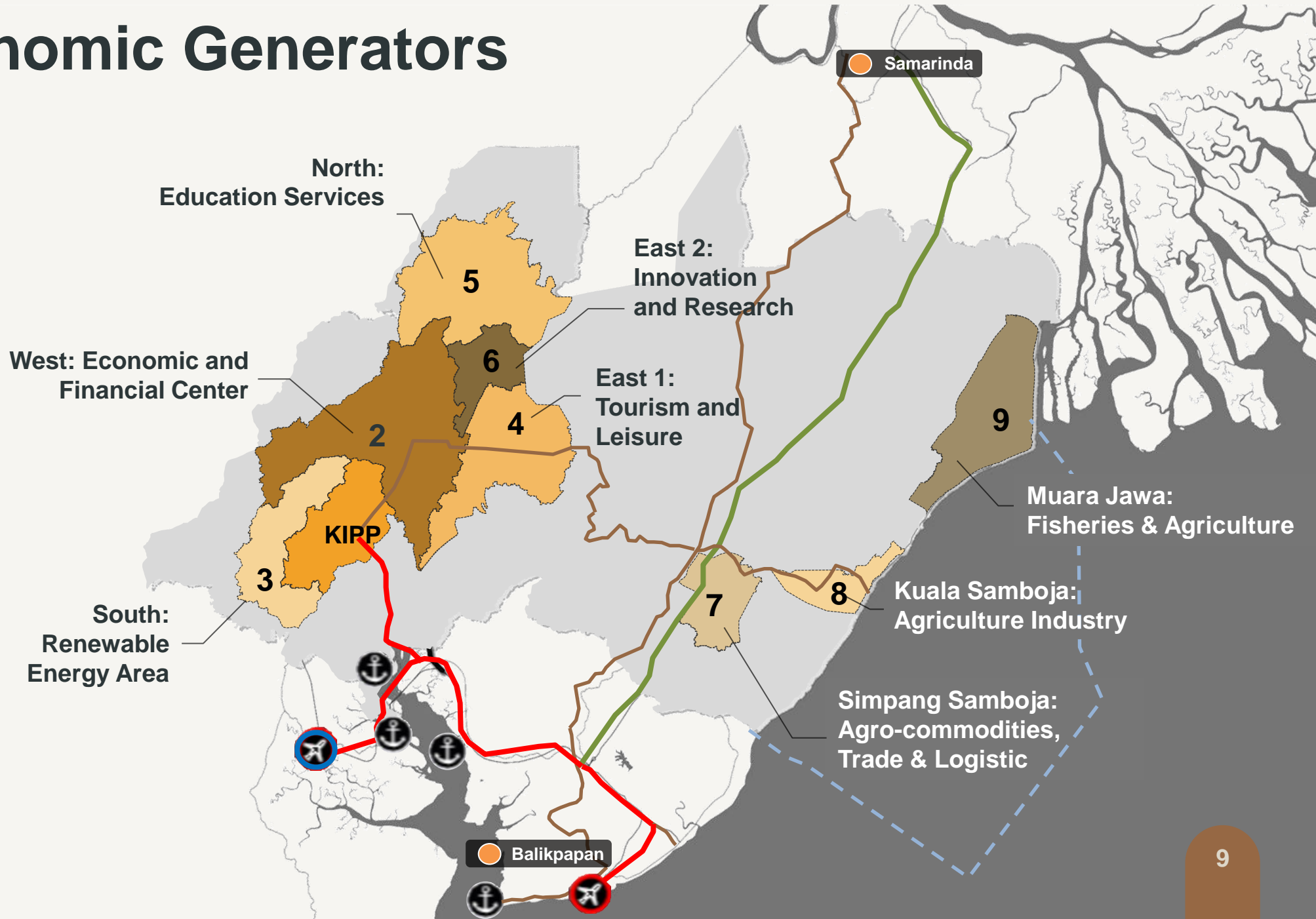


Planning Hierarchy of Nusantara



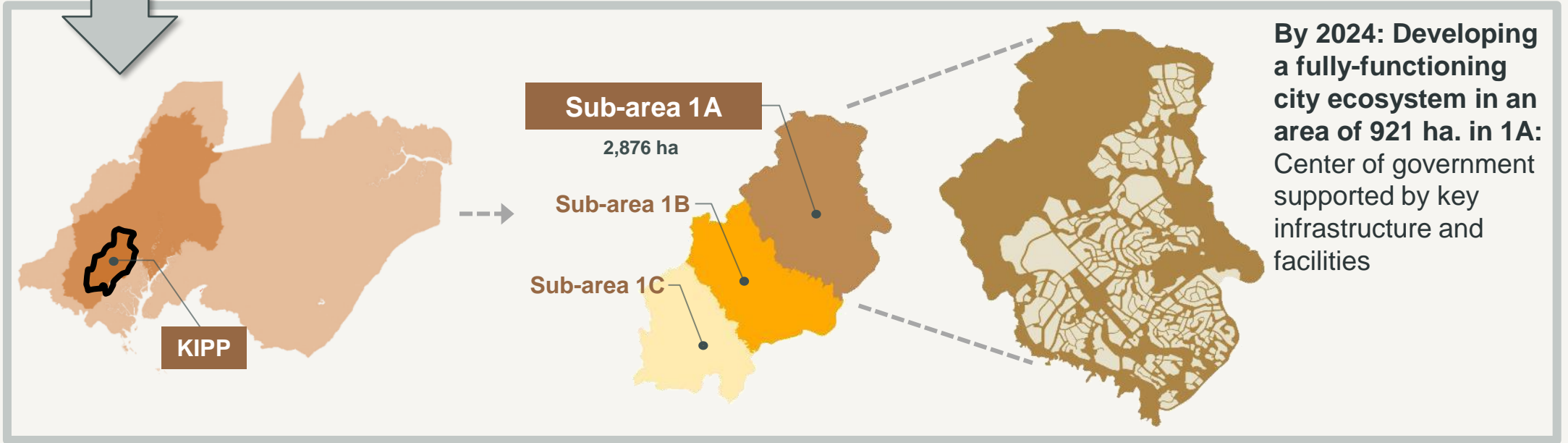
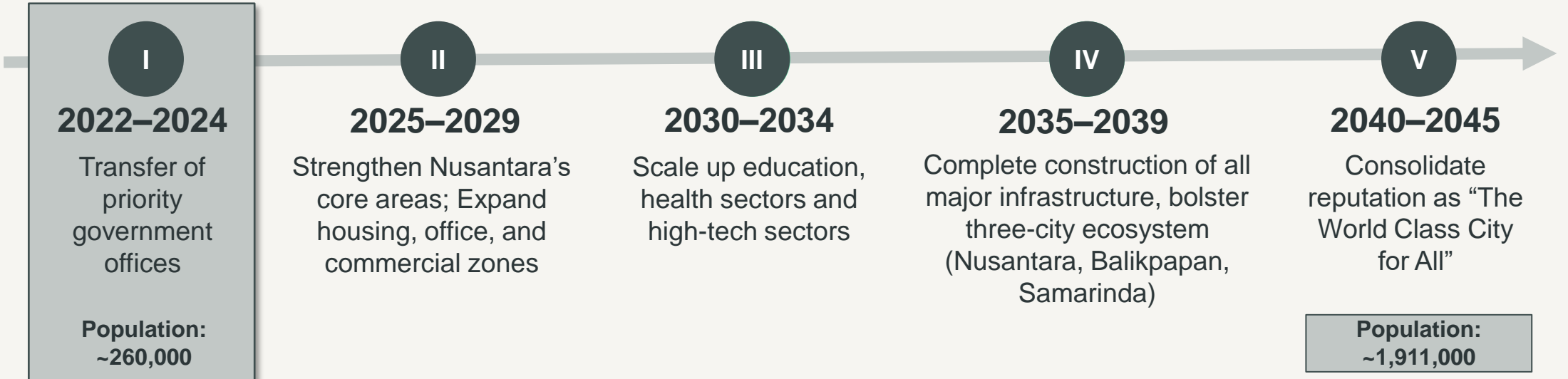


Nusantara's Nine Economic Generators





Nusantara's Development Phases

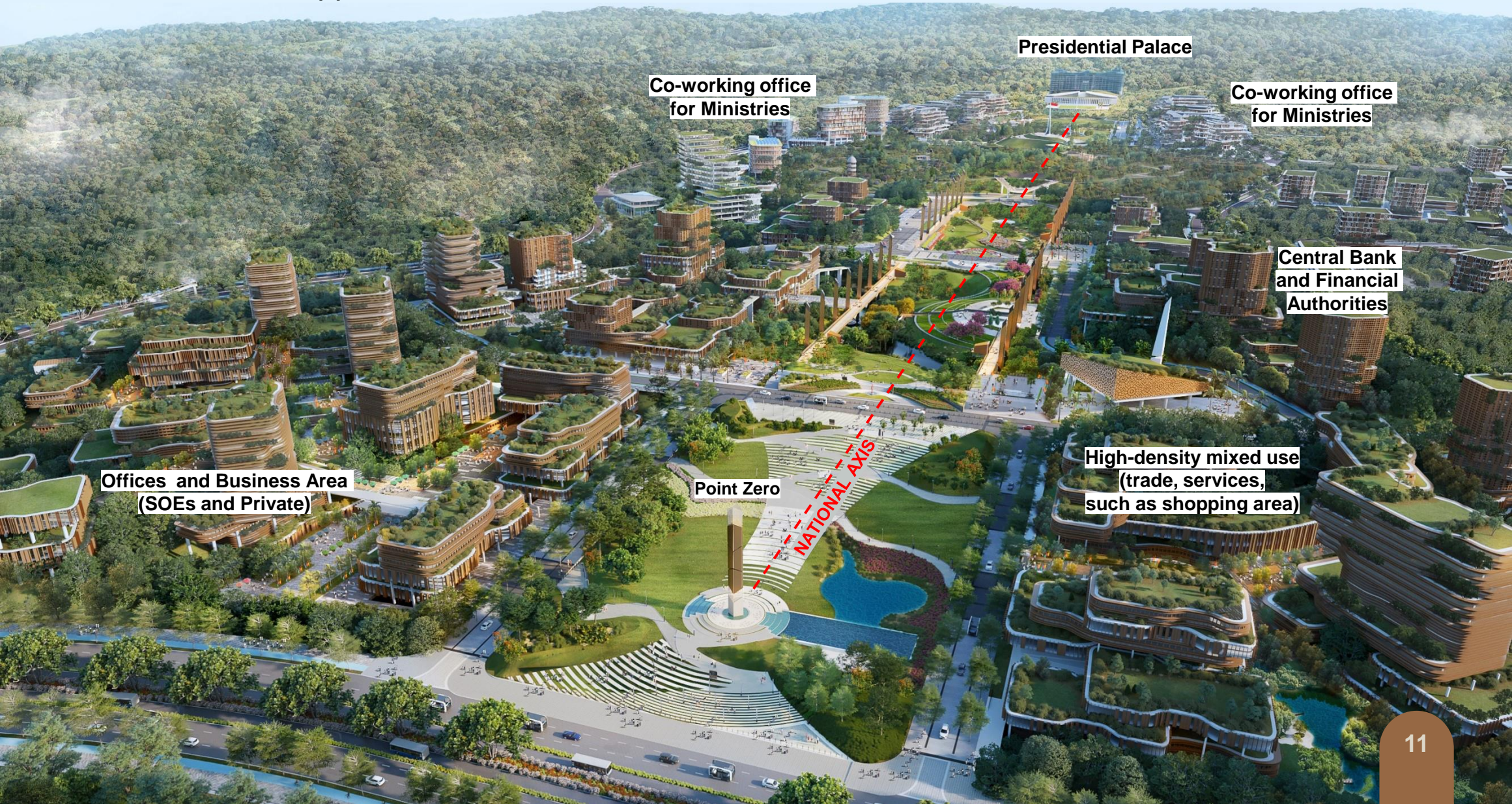




Nusantara in 2024

A fully-functioning city ecosystem in 1A

Center of government supported by key infrastructure and facilities to support the livelihood of its residents



Presidential Palace

Co-working office
for Ministries

Co-working office
for Ministries

Central Bank
and Financial
Authorities

Offices and Business Area
(SOEs and Private)

Point Zero

NATIONAL AXIS

High-density mixed use
(trade, services,
such as shopping area)



Nusantara as Sustainable Forest City

65%
Tropical forest created through “reforestation”

25%
Highly-controlled urban area to minimize carbon footprint and emission



Carbon-Neutral City by 2045

Launched at
COP27 (2022)

A scoping study to map Nusantara's pathway to be a carbon-neutral city



To be launched at
COP28 (2023)

A comprehensive strategy and action plan to achieve Nusantara's net-zero target





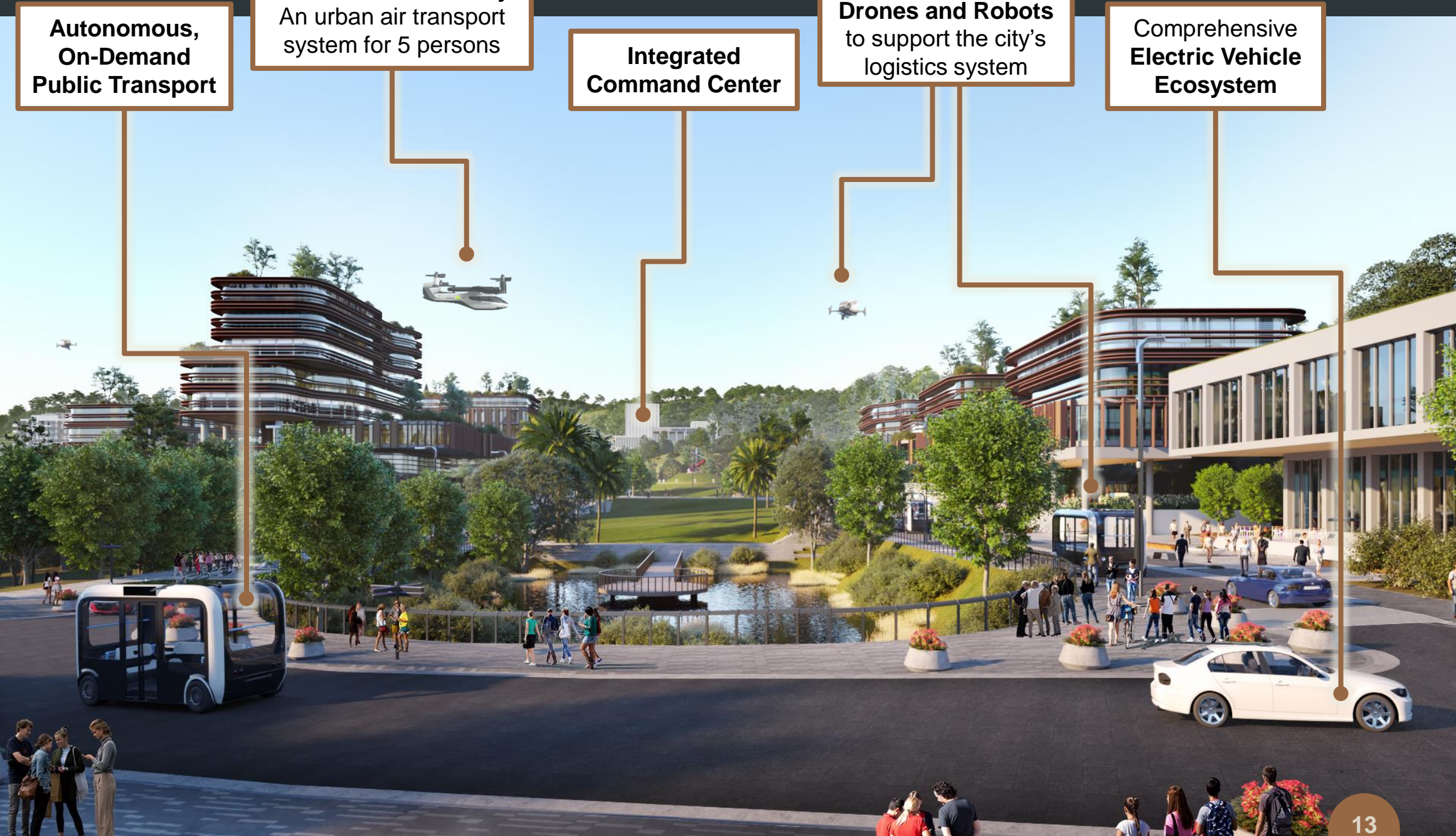
**Autonomous,
On-Demand
Public Transport**

Advanced Air Mobility:
An urban air transport
system for 5 persons

**Integrated
Command Center**

**Autonomous Mobile
Drones and Robots**
to support the city's
logistics system

**Comprehensive
Electric Vehicle
Ecosystem**





A city fully powered by renewable energy, optimized by smart grids and meters

Smart Farming Ecosystem: Precision Farming, Urban Agriculture, Smart Agroforestry

IoT-based Water Quality Monitoring and Control System

Natural Disaster Early Warning System

Forest Management System: Fire and Climate Censors, Hotspot Monitoring, Firebreak System

Biodiversity and Carbon Stock Monitoring System





Development Progress: Infrastructure (November 2023)



Presidential Palace and the Ceremonial Plaza



Dam to supply Nusantara's raw water



Plant nurseries



Water intake and piping system



Water reservoir



Progress: Community Re-skilling and Up-skilling



Business Skills Training for MSMEs



Coffee-making Class



Cooking Class



Sewing Class



Hydroponic Farming



Progress: Digital Empowerment



**“Some people make things happen,
some watch things happen,
while others wonder what has happened.”**

~ Eleanor Roosevelt



NUSANTARA

