

National Spatial Planning and Institutional Dynamics in Federal Nepal

The case of Urban Policy and National Urban Development Strategy

6th Spatial Planning Platform (SPP) Conference in Indonesia
6-8 November 2023

07 November 2023,
Balikpapan, Indonesia

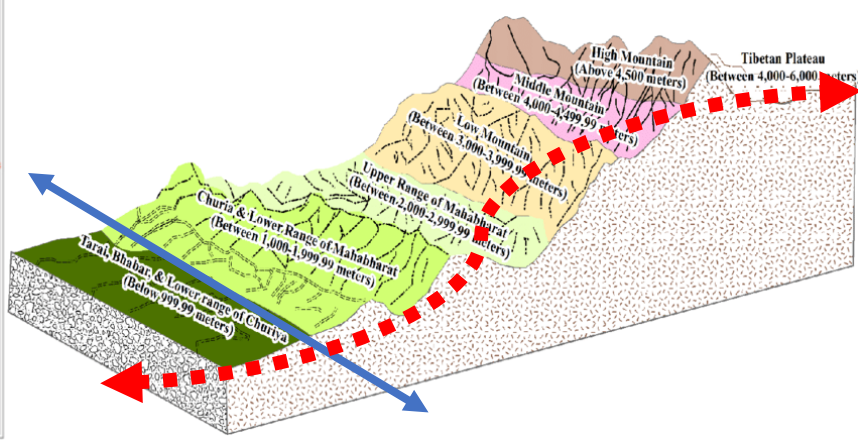
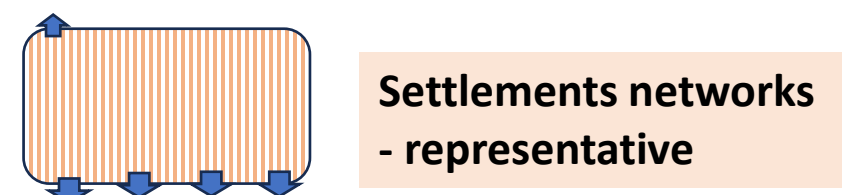
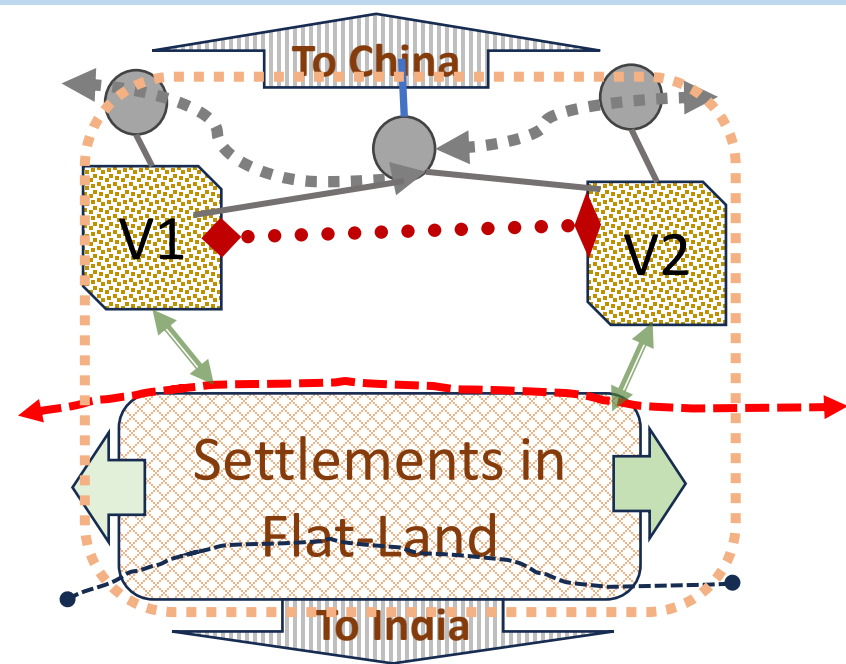
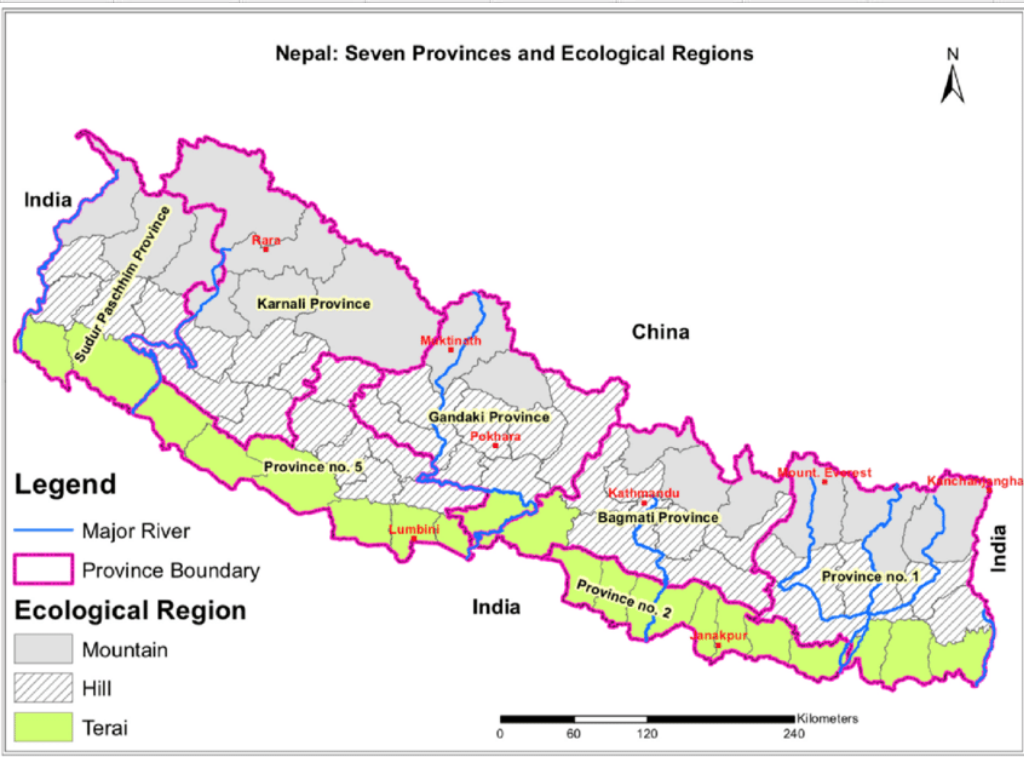
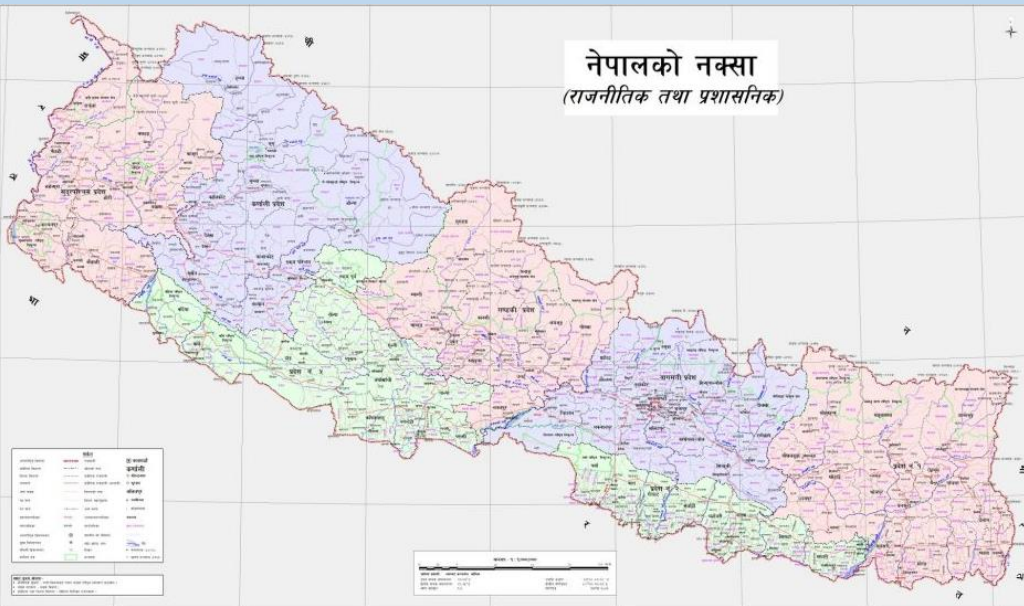
Padma K MAINALEE
Joint Secretary, Ministry of Urban Development

National Spatial Planning and Institutional Dynamics in Federal Nepal

The case of Urban Policy and National Urban Development Strategy

- 1. National spatial planning and federal structure**
- 2. Institutional dynamics at the Federal, Provincial, and the Local Level**
- 3. Role to complement and conflict to national agenda of prosperous national urban system**
- 4. Issue of land as coordinating element for spatial planning**
- 5. Institutions conceived at the provinces and at the local levels to contribute the spatial agenda**

1. National spatial planning and federal structure (network of settlement)



Federal Structure

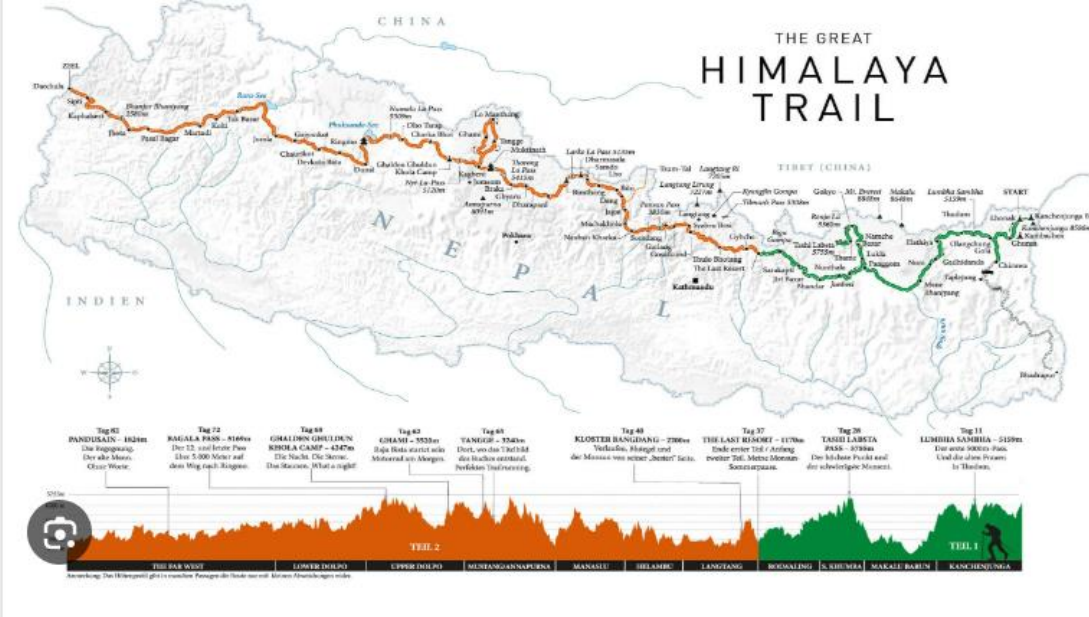
3 tiers of governments (w/ executive and legislative authority) - Federal, 7 provincials, and 753 Local governments

77 districts (admin. units)

Infrastructure Development

- Road / transport: Ministry of Physical Infrastructure and Transport (F/P)
- Land Administration: Ministry of Land (F/P) and also local levels for administration
- Urban Infrastructure: F/P/L
- Social infrastructure: F - Sector ministry; /P/Local

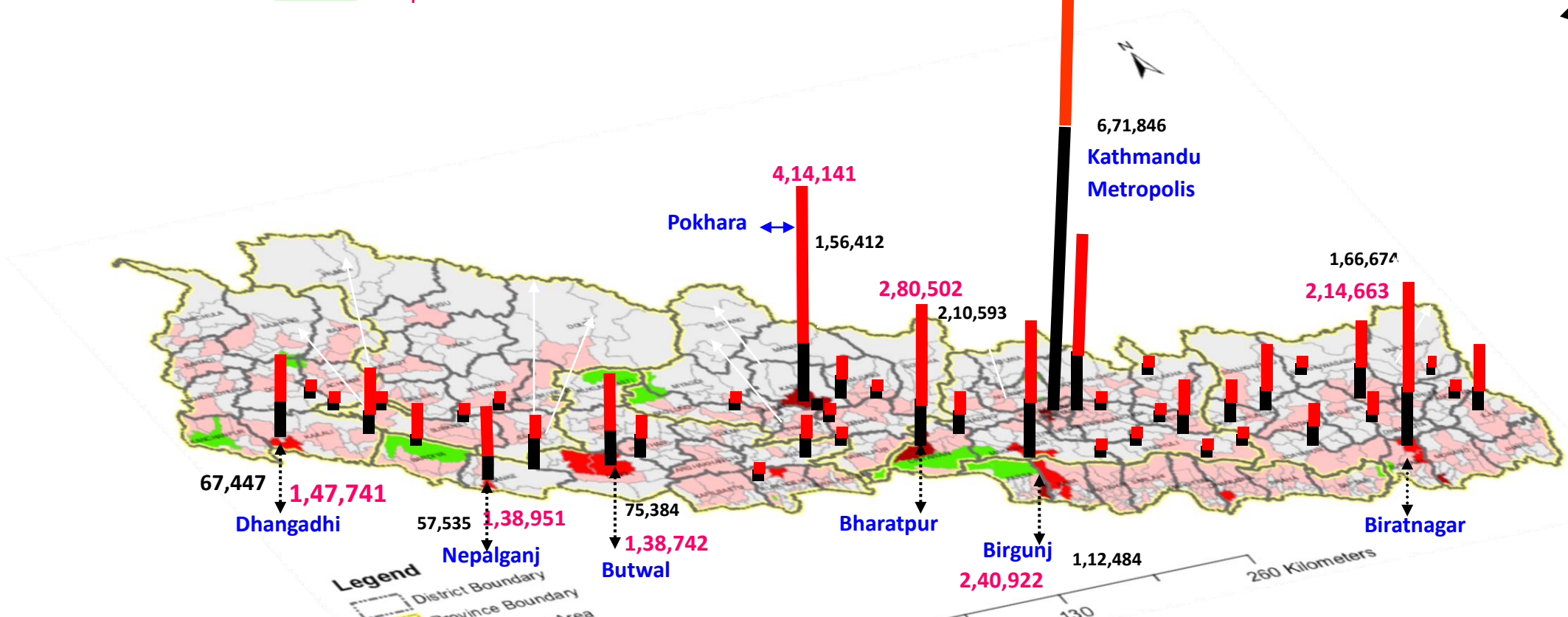
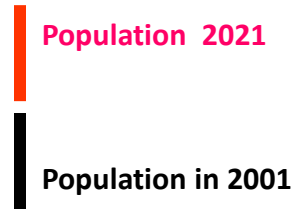
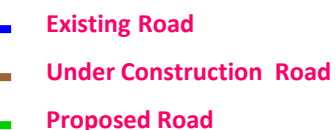
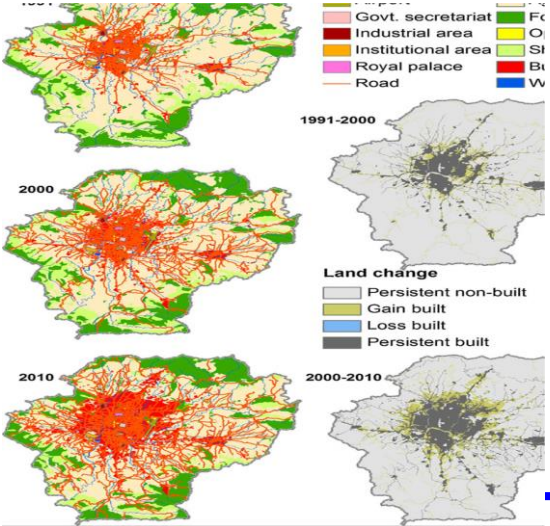
(Inter)national Interconnections as economic infrastructure



India to allow Nepal use of three rivers for inland waterways to push regional connectivity - The Economic Times

Great Himalaya Trail, the great Trekking of Nepal - B4Experience

Visit >



Urban Policy 2007

Balancing national urban structure

Recent Study on Defining Urban Population

Category	2011			2021		
	Area Sq Km	Population	Pop %	Area Sq Km	Population	Pop %
Rural	124,391.95	10,106,315	38.50%	124,078.06	9,600,393	33.19%
Peri Urban	18,547.25	10,287,464	39.19%	19,753.764	11,496,375	39.75%
Urban	4,741.22	5,857,811	22.31%	4,223.65	7,828,712	27.07%
		26,251,590	100%		28,925,480	100%

Population in municipality is 66% regardless of its infrastructure condition

Planning Support from Central Government

Stand alone Municipality :

Urban Cluster and region:

Corridor:

Urban system:

Support to planning - IUDP, investment & action

City / (Small Settlements in Network) or 'urban region'

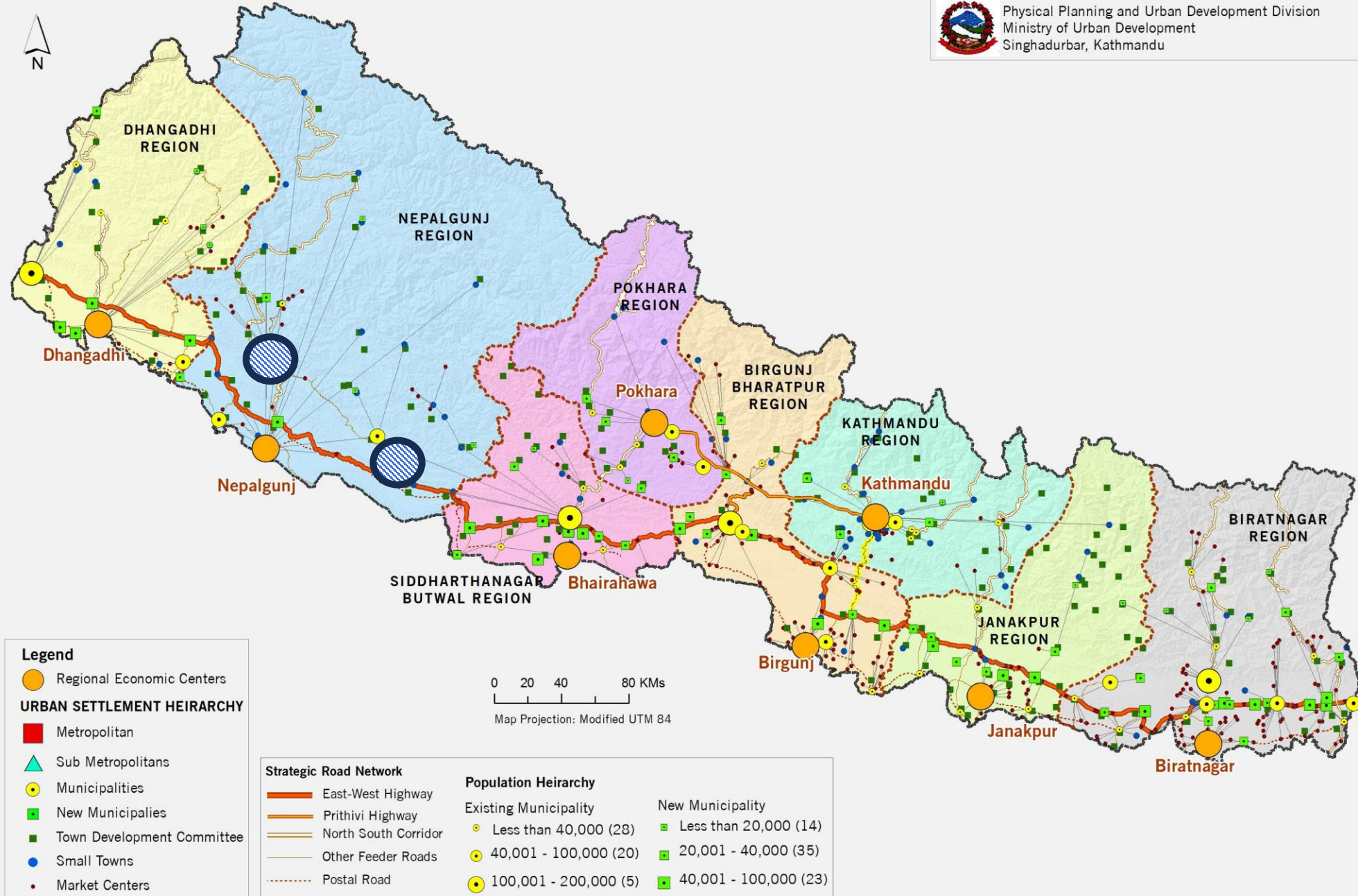
Defining urban region with one hour travel time

Area with sustainable exchange of goods and services

ECONOMIC REGIONS BASED ON HINTERLAND OF MAJOR URBAN CENTERS

NATIONAL URBAN DEVELOPMENT STRATEGY (NUDS)

Physical Planning and Urban Development Division
 Ministry of Urban Development
 Singhadurbar, Kathmandu



Data Source: Regional Development Strategy 2007, DUDBC, Survey Department Nepal

8 economic regions with its command area in the country

6 in the flat land
 2 (ktm and Pokhara are in Hill – the valley)

2 new provincial capital (Surkhet and Dang) are expected to be new.

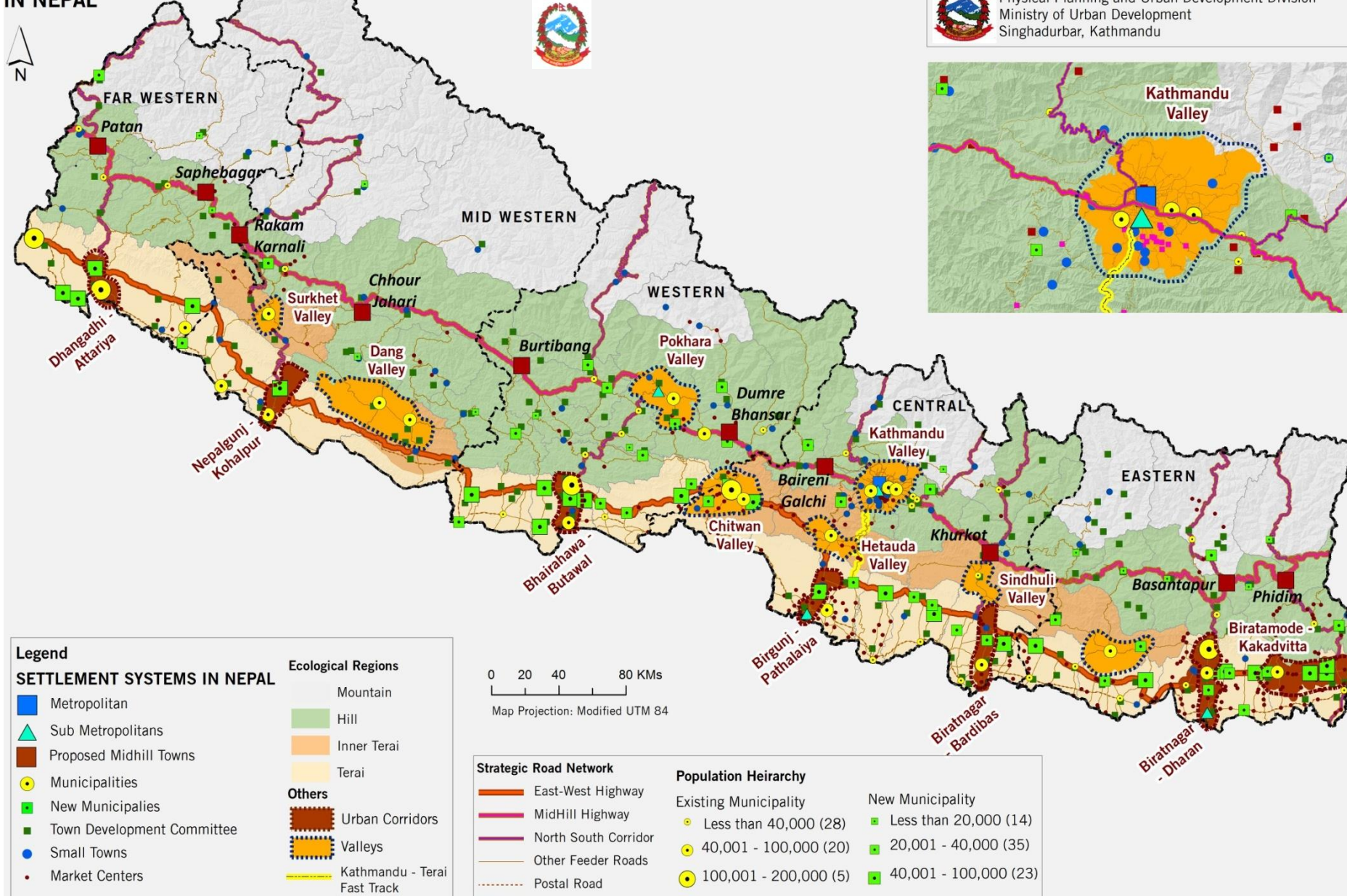
5 provincial capitals are in these identified economic centers

Urban System: Settlement Distribution

Settlement system

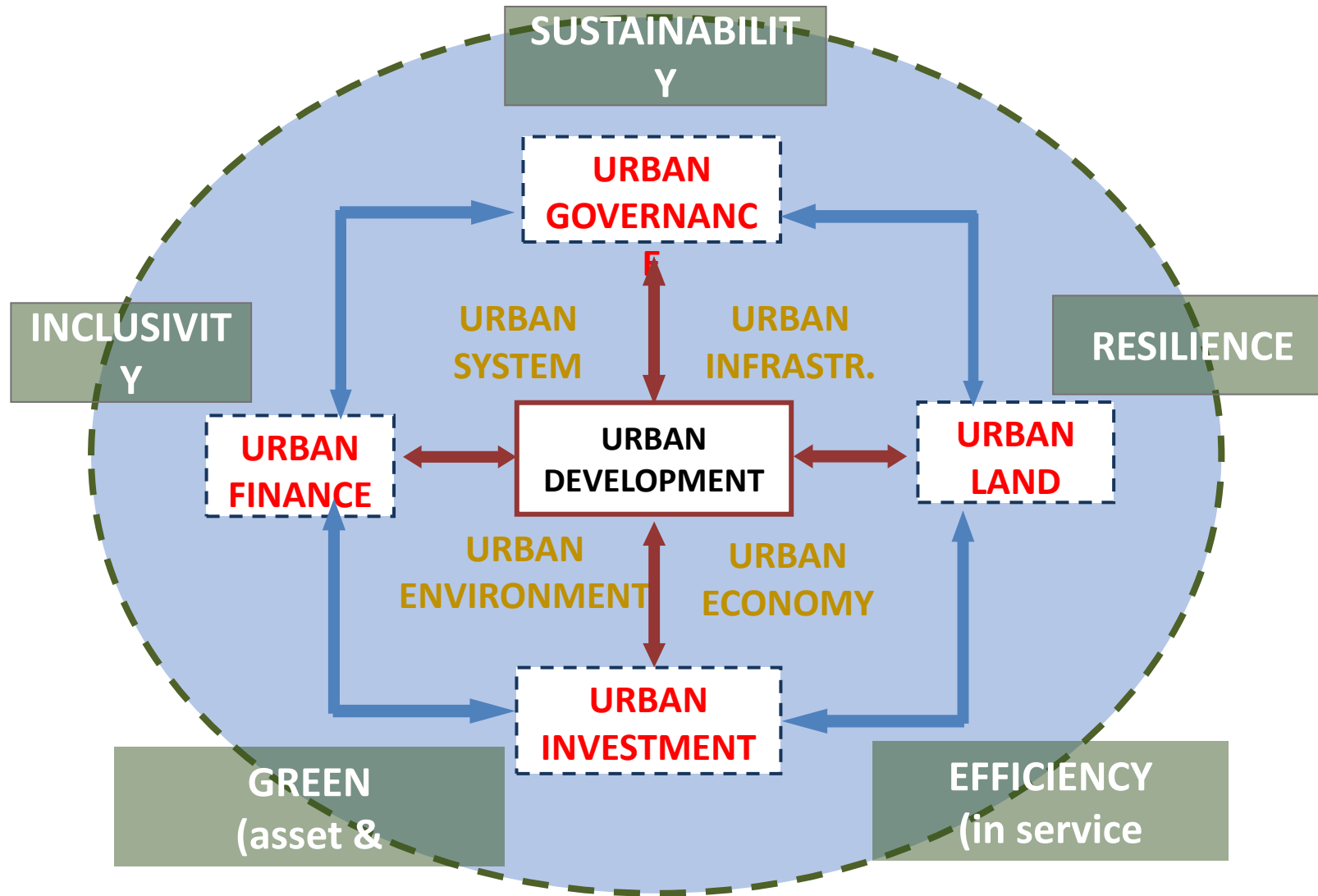
- 50% plus in flat region – terai
- 8 valleys – major settlement area
- Urban region created by the major valleys
- Urban economic corridors connecting Indian Border and rail head
- Municipality as center of service delivery

SETTLEMENT SYSTEMS IN NEPAL



Data Source: DUDBC, Survey Department Nepal

National Urban Development Strategy 2017

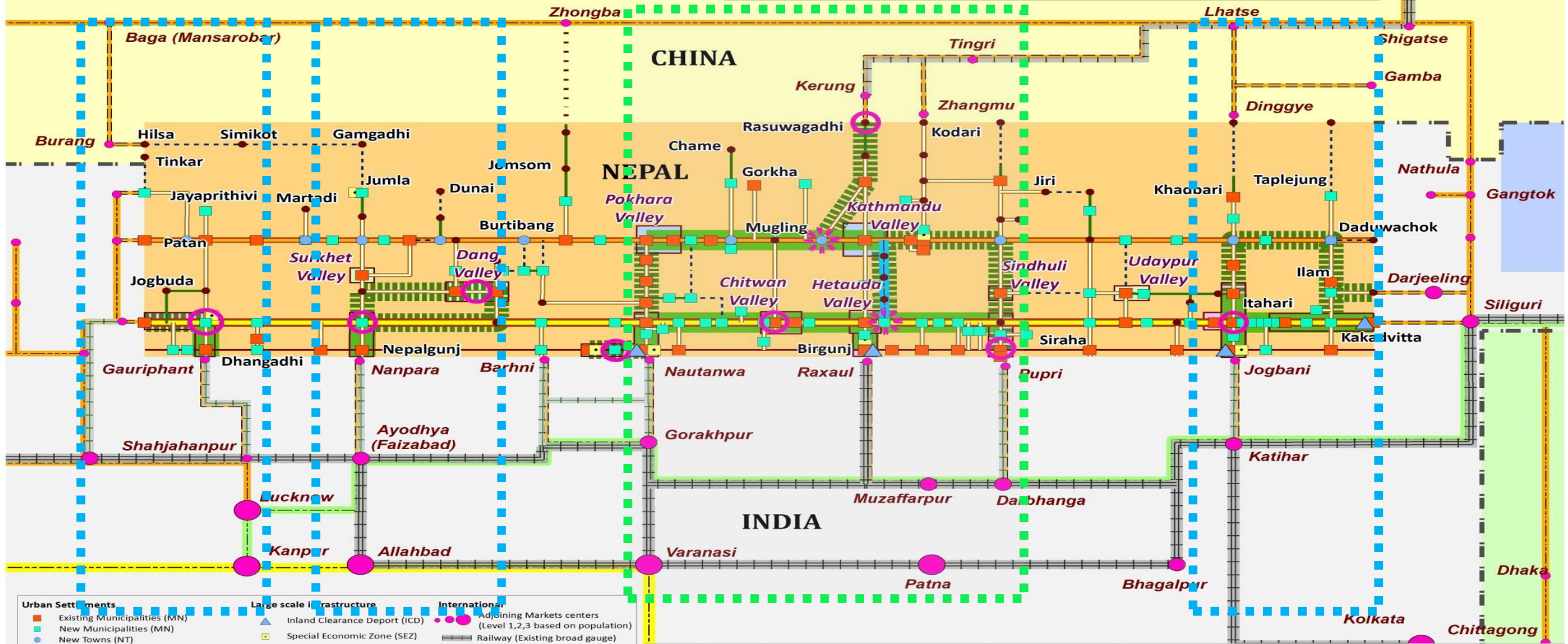


NUDS approaches urban development as 4 thematic sectors and 4 mechanisms for implementation, with 5 guiding principles

Challenges for the policy: To devise a Urban Investment Strategies – the system approach

URBAN SYSTEM OF NEPAL AND ITS REGIONAL SETTING (SCHEMATIC)

This schematic map aims to show the complex road networks, urban regions, settlements, evolving urban systems and regional setting of Nepal in a simplified form. This map is not in scale and the locations are relative, hence should not be interpreted in terms of ground distance, existing topography and terrain.



Urban Settlements	Large scale infrastructure	International
Existing Municipalities (MN)	Inland Clearance Depot (ICD)	Adjoining Markets centers (Level 1,2,3 based on population)
New Municipalities (MN)	Special Economic Zone (SEZ)	Railway (Existing broad gauge)
New Towns (NT)		Railway (Metre Gauge)
Other Urban Centers and Border Towns (UC/BT)		Railway (Proposed)
Urban Regions	Road (Nepal)	Road (International)
Evolving Urban Regions (EUR)	EW Highway	Border Connection Road
Identified Urban Valleys and Corridors	Proposed MidHill Highway	Border Connection Non Motorable
Matured Urban Regions (MUR)	Postal Road	India East-West Corridor
Evolving/Future Urban Corridors (EC)	KTM-Tarai FastTrack	Other Highways
Maturing/Matured Urban Corridors (MC)	Other Road	India Golden Quadrilateral
	Earthen/Under Construction	
	Planned Road	

LEGEND	SETTLEMENT	TYPE OF INFRASTRUCTURE	BASIC	HIGHER ORDER	STRATEGIC
NT, MN, UC, BT	Basic Services		Water Supply	Intra-City Connectivity	Mass Transit System
EC	Basic Services		Sanitation	Urban Transport System—City Bus, Parking Facility	Inter-City Connectivity
EUR	Basic Services & Higher Order Shared Infrastructure		Drainage and Sewerage	Urban Energy	Regional Bus and Freight Parking Facility and Terminals
MC	Basic Services & Higher Order Shared Infrastructure		Solid Waste Management	City Hall, Exhibition center	Airport
MUR	Strategic Infrastructure		Housing	Recreation—stadium	Information and Communication Technology Facility
			Paved Urban Road	City Parks and play grounds	University and Research Centers—Knowledge Hub
			Power		Specialized Medical Centers
			Tele-communication		International Convention and Exposition Center
					Integrated Urban Energy System
					Inland Clearance Depot/ Dry Port

Recent Urban Projects - Urban Corridor Initiatives

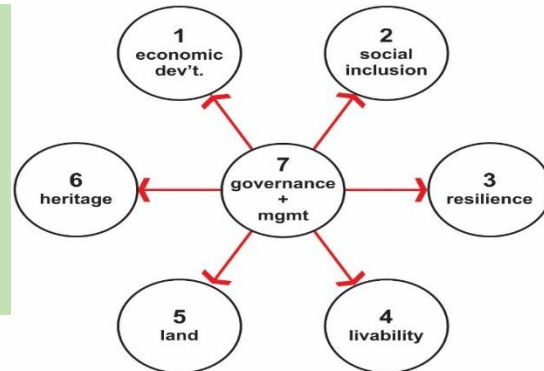
- Urban Corridor Initiatives

2 Corridors - a) Biratnagar – Dharan; and b) Butwal Lumbini are under procurement.

1 corridor – Birgunj Hetauda is under study (identifying sectors for investment)

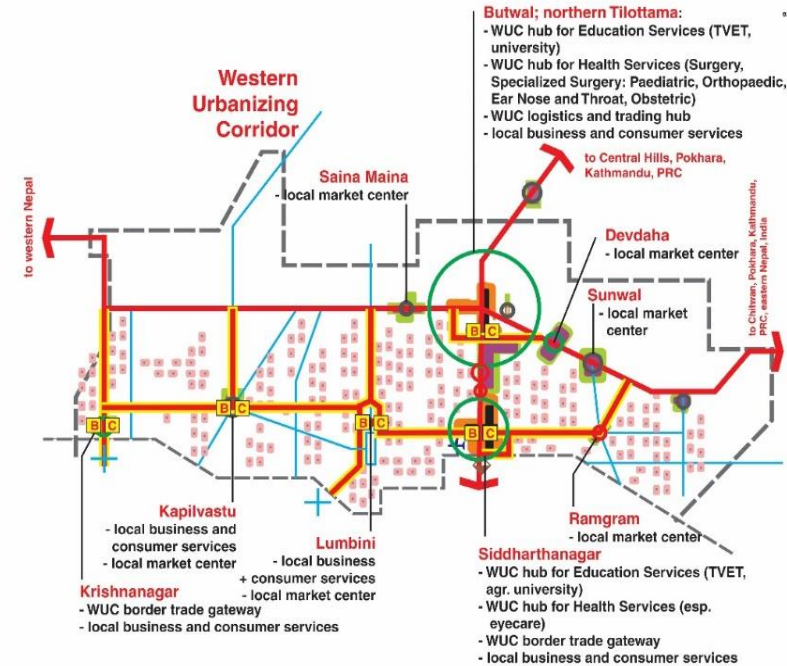
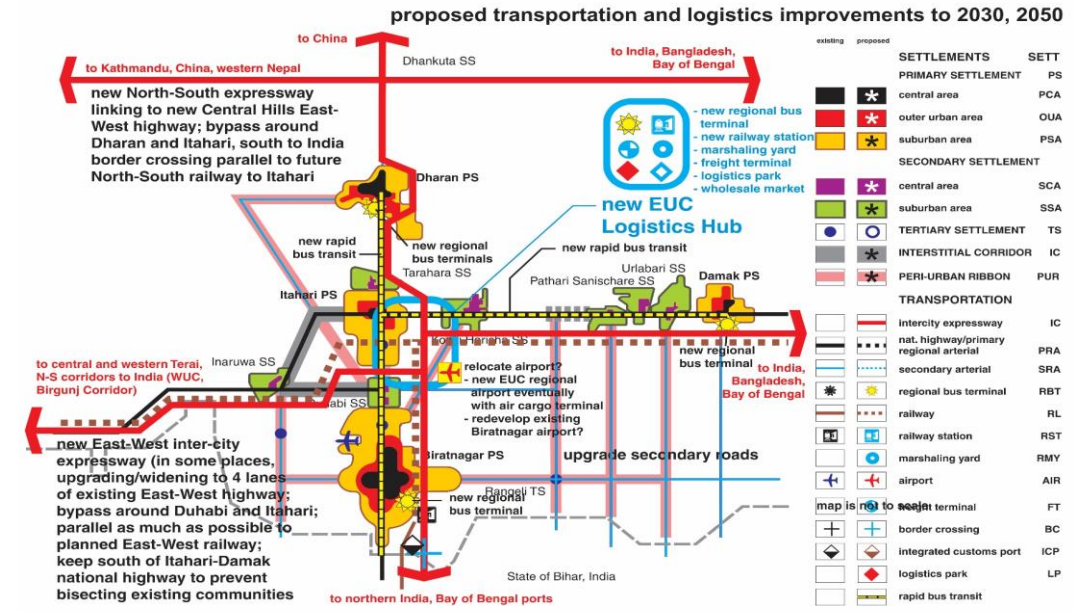
Recognizing a region for investments to contribute to Economy.

Investment for maturing the urban system in evolving region



- Integrated Development Strategy to 2030 and 2050 with an Implementation Plan

- Corridor Capital Investment Plan with pipelines of potential projects – that require due diligence through detailed assessments of technical and financial feasibility



existing	proposed	SETTLEMENTS	SETT
[Symbol]	[Symbol]	PRIMARY SETTLEMENT	PS
[Symbol]	[Symbol]	central area	PCA
[Symbol]	[Symbol]	outer urban area	OUA
[Symbol]	[Symbol]	suburban area	PSA
[Symbol]	[Symbol]	SECONDARY SETTLEMENT	
[Symbol]	[Symbol]	central area	SCA
[Symbol]	[Symbol]	suburban area	SSA
[Symbol]	[Symbol]	TERTIARY SETTLEMENT	TS
[Symbol]	[Symbol]	INTERSTITIAL CORRIDOR	IC
[Symbol]	[Symbol]	PERI-URBAN RIBBON	PUR
[Symbol]	[Symbol]	TRANSPORTATION	
[Symbol]	[Symbol]	intercity expressway	IC
[Symbol]	[Symbol]	nat. highway/primary regional arterial	PRA
[Symbol]	[Symbol]	secondary arterial	SRA
[Symbol]	[Symbol]	regional bus terminal	RBT
[Symbol]	[Symbol]	railway	RL
[Symbol]	[Symbol]	railway station	RST
[Symbol]	[Symbol]	marshaling yard	RMV
[Symbol]	[Symbol]	airport	AIR
[Symbol]	[Symbol]	map is not to scale	
[Symbol]	[Symbol]	air cargo terminal	FT
[Symbol]	[Symbol]	border crossing	BC
[Symbol]	[Symbol]	integrated customs port	ICP
[Symbol]	[Symbol]	logistics park	LP
[Symbol]	[Symbol]	rapid bus transit	
[Symbol]	[Symbol]	AGRO-PROCESSING	AA
[Symbol]	[Symbol]	Agro-processing Zone	APZ
[Symbol]	[Symbol]	cold storage facility	CSF
[Symbol]	[Symbol]	fish farming + process.	FFP
[Symbol]	[Symbol]	slaughterhouse	SL
[Symbol]	[Symbol]	INDUSTRIAL AREAS	IA
[Symbol]	[Symbol]	Special Economic Zone	SEZ
[Symbol]	[Symbol]	SME multi-storey estate	MIE
[Symbol]	[Symbol]	industrial park	IND
[Symbol]	[Symbol]	LOGISTICS AREAS	LA
[Symbol]	[Symbol]	freight terminal	FT
[Symbol]	[Symbol]	border crossing	BC
[Symbol]	[Symbol]	integrated customs port	ICP
[Symbol]	[Symbol]	logistics park	LP
[Symbol]	[Symbol]	wholesale market	WM
[Symbol]	[Symbol]	TOURISM AREAS	
[Symbol]	[Symbol]	tourism staging area	TSA
[Symbol]	[Symbol]	pilgrimage tourism area	PTA
[Symbol]	[Symbol]	business tourism area	BTA
[Symbol]	[Symbol]	eco-tourism area	ETA
[Symbol]	[Symbol]	leisure tourism area	LTA
[Symbol]	[Symbol]	tourism circuit	TC
[Symbol]	[Symbol]	SERVICE AREAS	SA
[Symbol]	[Symbol]	business services	BS
[Symbol]	[Symbol]	consumer services	CS

2. Institutional dynamics at the Federal, provincial, and the local levels

S. No	Description	Federal Govt	Provinces	Local Government	Remarks
1	National/ regional development Plan	National Planning Commission	Provincial Planning Commission	City Planning Commission/Town Development Committee	Excluding for local Governments, the commissions are looking at Macro economic indicator of the national or regional
2	Land use institutions	Federal Council	Provincial Council	Local level Council	Local level to finalize, but any revision has to be from the federal Land Use Council headed by the Federal Ministry
3	Road and connectivity	Ministry	Prov. Ministry	Local Government	Responsibility is clear, but investment is unclear - three levels
4	Urban infrastructure	Ministry	Prov. Ministry	Local Government	Road and drain, economic infrastructure, environmental infrastructure, governance infrastructure etc
5	Social infrastructure	Ministry(s)	Prov. Ministry	Local Government	Thematical responsibility for health, education, employment and labor, and for women, children and social affairs
6	Land Management	Federal Ministry	Transaction fee	Land tax	Federal ministry for norms and standards
7	Urban/ housing Development	Ministry	Coordination	Implementation	It includes development of infrastructure and investment for service delivery and improvement of infrastructure.

Challenges for the policy: To devise a Urban Investment Strategies

Federal Urban Policy Objectives 2023 (Prop.)

Prosperous national urban system

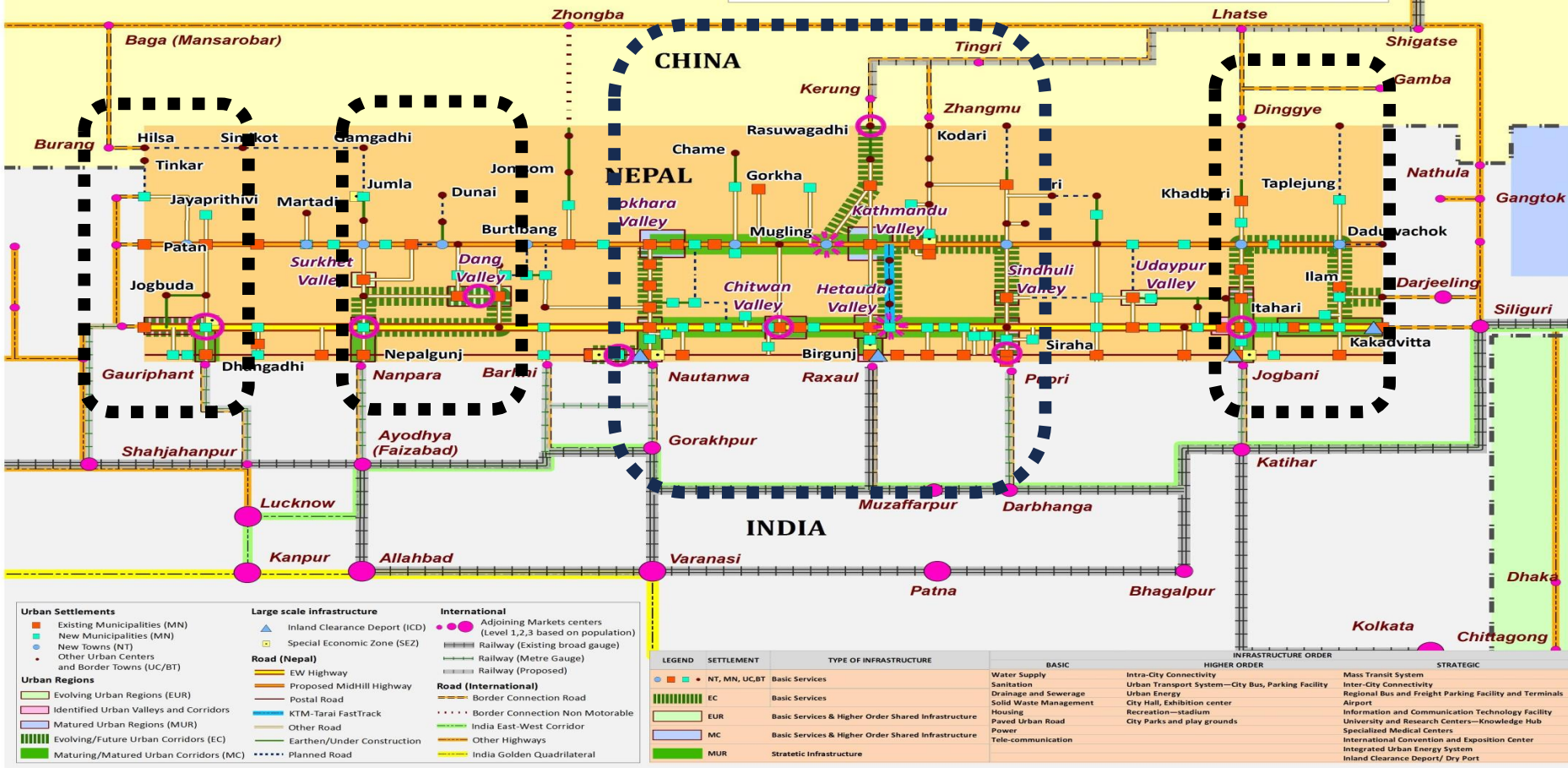
Access to resilient infrastructure

Resource mobilization for urban development

Good urban governance and intergovernmental co-ordination

URBAN SYSTEM OF NEPAL AND ITS REGIONAL SETTING (SCHEMATIC)

This schematic map aims to show the complex road networks, urban regions, settlements, evolving urban systems and regional setting of Nepal in a simplified form. This map is not in scale and the locations are relative, hence should not be interpreted in terms of ground distance, existing topography and terrain.



Spatial Investment vision for objective of regional development

- Investment in Urban System— that is in a region
- Region – matured and evolving
- Maturity and Evolution is measured only interconnection to market points of North and South

3. Role to complement and conflict to national agenda of prosperous national urban system.

To agree on national and regional spatial vision – the urban system in this case



To agree on National and regional spatial development Plan – through national development plan (*National Settlement Development Plan, National Connectivity Plan – Road, Rail and Yards*)

Sub sets of National Vision at Province and Local Level – *Detailing of the National vision for investment*

- Economic infrastructure
- Social infrastructure
- Higher order infra for services and economic
- Others

Implementation and management support from Federal Government

Implementation at Province and Local Level

Common platform

Prioritizing and investment commitment



4. Issue of land as coordinating element for spatial planning

Land - the coordinator of all development activities

Infrastructure gap and need
Infrastructure Development
Social Infrastructure and its order and command area
Economic infrastructure development
Settlement development – New towns, (re)building, regeneration, revitalization, cities and making it smart
Infrastructure management mechanism

- Land Use plan
- Land Use Control
- Land use Revisions and Updating
- Development coordination and control

Knowing the hierarchical order of social and infrastructural services
Investments and management mechanism
Leadership in management (F/P/L)
Settlements development (in Network)
Economic infrastructure (in region and Province)

Land Use Act 2019

Federal Land Use Council (revision)

Provincial Land Use Council

Local (municipal) Land Use Council (declaration)

Role of Land in Spatial Plan

6. Institutions conceived at the provinces and at the local levels to contribute the spatial agenda

Institutions

i) federal Level

- a) National Planning Commission (1, 4)
- b) National Urban Forum (1, 3, 4)
- c) Sectoral Ministries (3, 4, 5, 6)

ii) Provinces

- d) Provincial Planning Commission (2, 4, 5, 6)
- e) Sectoral Ministries (3,4,5,6)

iii) Local levels (all excl. 1)

- f) Municipality(ies)
- g) Municipal planning commission or Town Development Committees

Spatial agenda

1. Macro Indicator setting and overall periodic plan (SDG, Climate change, Mortality etc)
2. Sub-setting of (1) to the Macro indicator
3. National Urban Development Plan
4. Land and settlement Development policy and implementation
5. Development Coordination
6. Investments

Tools expected

- a) Urban Development Act
- b) Utility corridor Act
- c) National, Provincial and Local Plans
- d) Land use councils for Land use implementation
- e) Land development – land pooling, Guided Land development and etc

NEPAL

National Highway of Nepal 2020/21

SUDURPASCHIM PROVINCE

KARNALI PROVINCE

GANDAKI PROVINCE

BAGMATI PROVINCE

PROVINCE 1

LUMBINI PROVINCE

PROVINCE 2

Legend

- District Headquarter
- + Airport
- Black topped
- Gravel
- Earthen
- Under Construction
- Planned
- River
- Country
- Province
- District



Indian Border

Postal road
connecting all
through Nepal

Nepal Rail In
process (only 80
KM constructed)

East West Highway
(visible 1)

Intervalley
connection Road
(Madan Bhandary
Road)

Mid Hill highway
(Visible 2)

Some thoughts and way forward through SPP platform

1. National Spatial Platform to contribute on economic infrastructure development
2. Investment sharing to infrastructure among governing units and partners are key to the success of national or regional or the local level development plans
3. Institutionalization of K-product is also a key element in which SPP international platform could perform.

Thank You