



REPUBLIC OF UGANDA

Ministry of Lands Housing and Urban Development

6th Spatial Planning Platform Meeting


DATE 7-8 November 2023

VENUE Balikpapan Indonesia


PROMOTING TERRITORIAL CONNECTIVITY THROUGH NATIONAL SPATIAL PLANNING

By Mr. Vincent B. Byendaimira



 byendaimira@gmail.com

 <https://mlhud.go.ug/>

 +256772447262

 November /2023

 Plot 13/15 Century House, Parliament Avenue, Kampala - UGANDA.

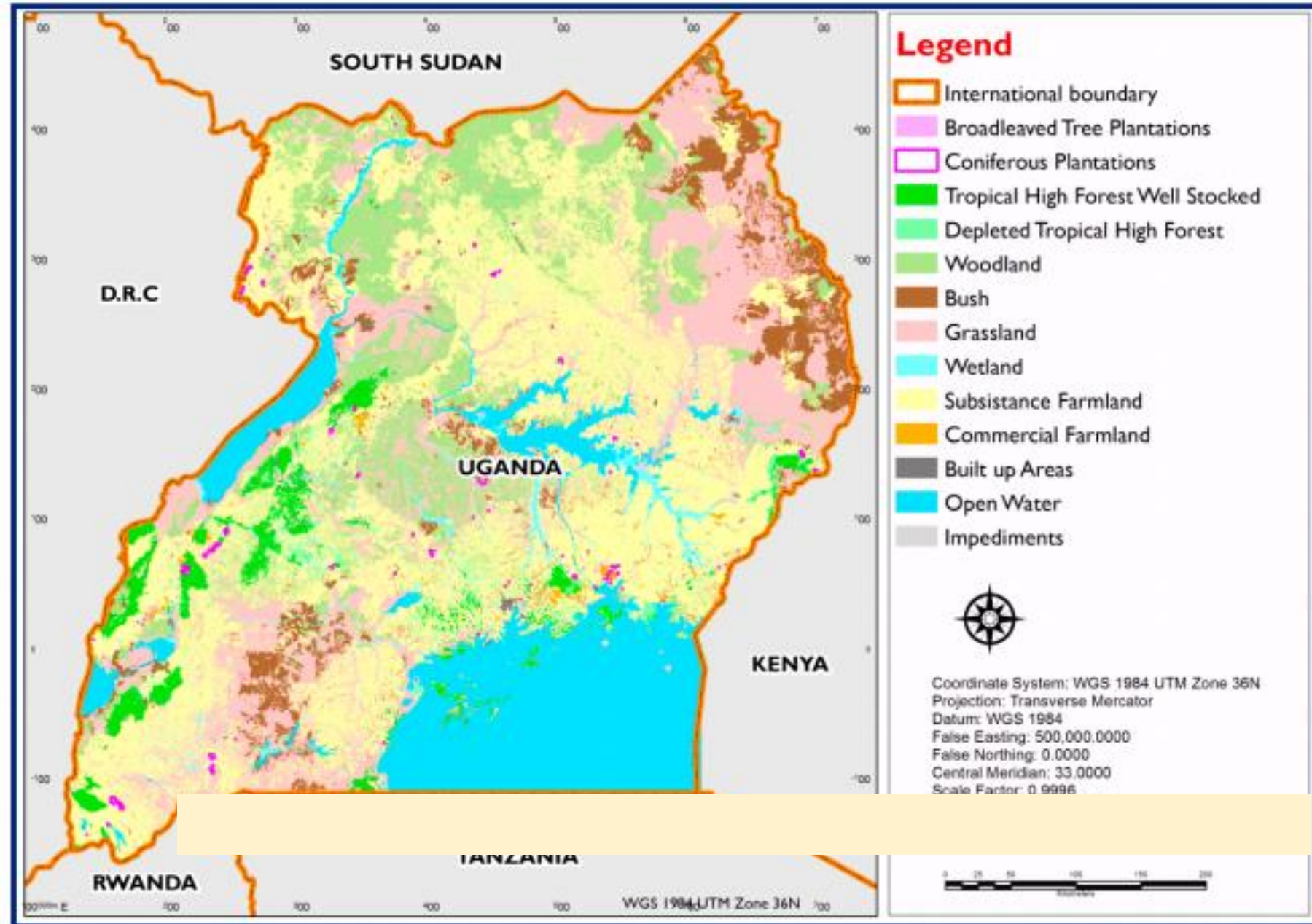
Outline

- 1 General Introduction**
- 2 Overview of Uganda's National Physical Development Plan (NPDP)**
- 3 Territorial Connectivity through the NPDP**
- 4 Uganda's strategic connectivity in the East African Region block**



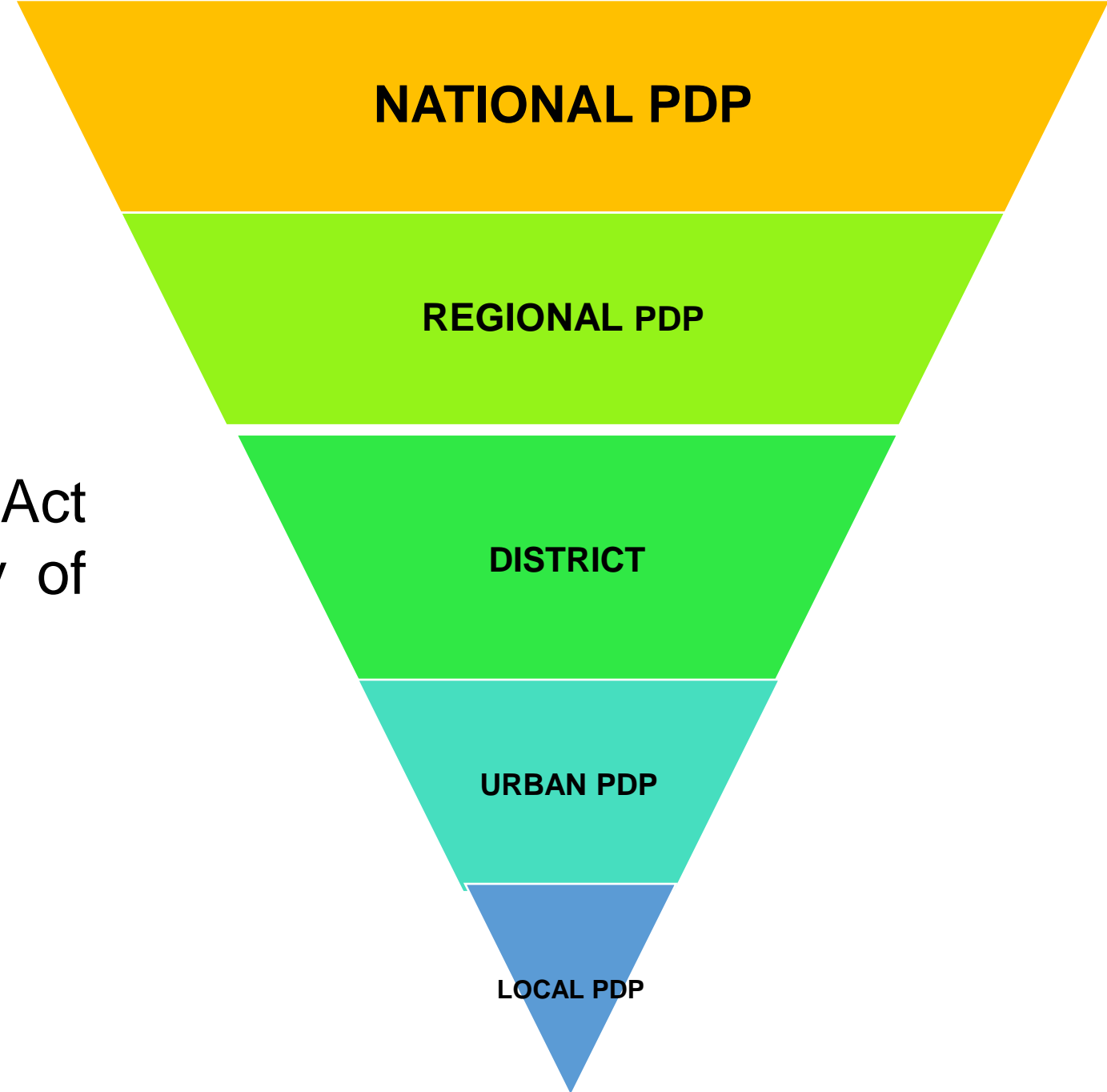
UGANDA

- › Total surface area (241,555sqkm)
- › Current Population 45 m.
- › Annual Population Growth rate 3.2%
- › Population living in Urban Areas – 30%
- › Annual Urban Population Growth Rate – 5.3%



Legal Framework

- › S.18 of the Physical Planning Act 2010 provides for a hierarchy of Physical Development Plans



Overview of Uganda's 1st National Spatial Plan

- › Approved by Cabinet on 14th November 2022
- › Emphasises Sustainable urbanization as a strategy for accommodating growing population while freeing land for agriculture



The Integrative Physical Plan

Orientation:

Integrative

Main Objective:

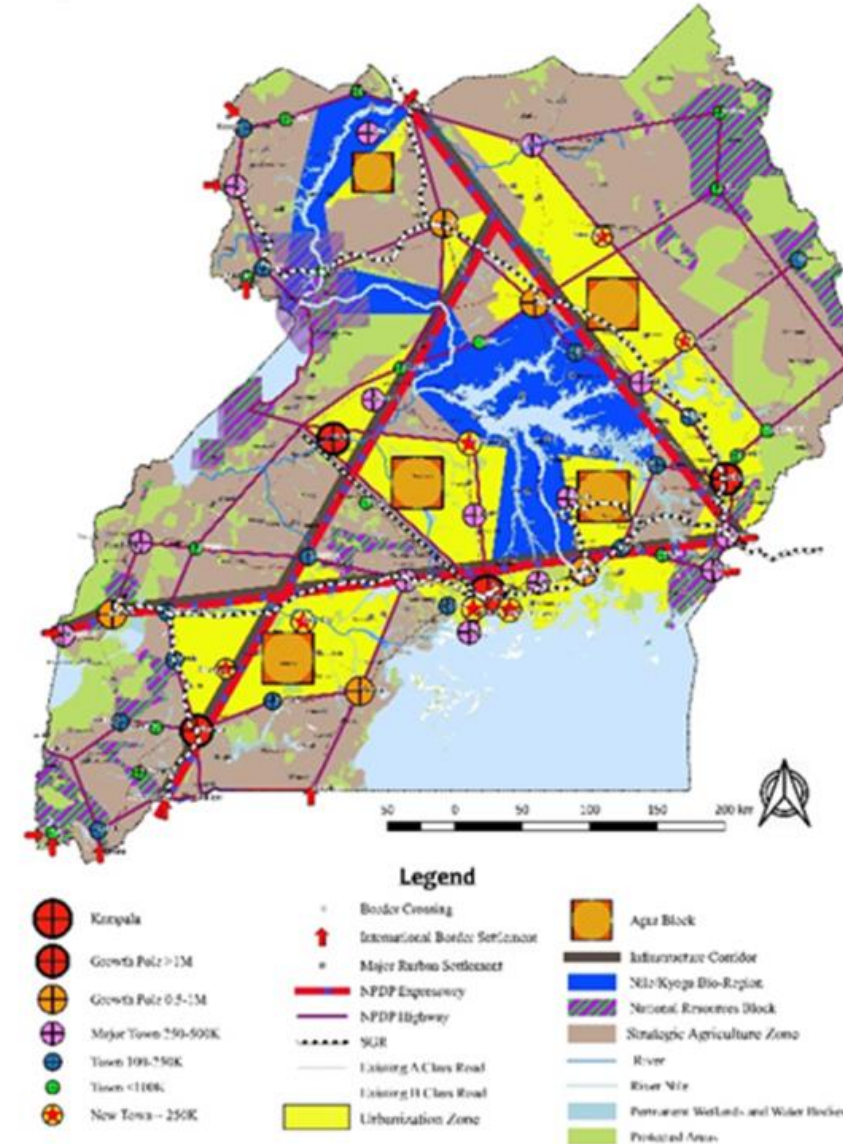
Integration of advantages from the 5 options

Planning concept:

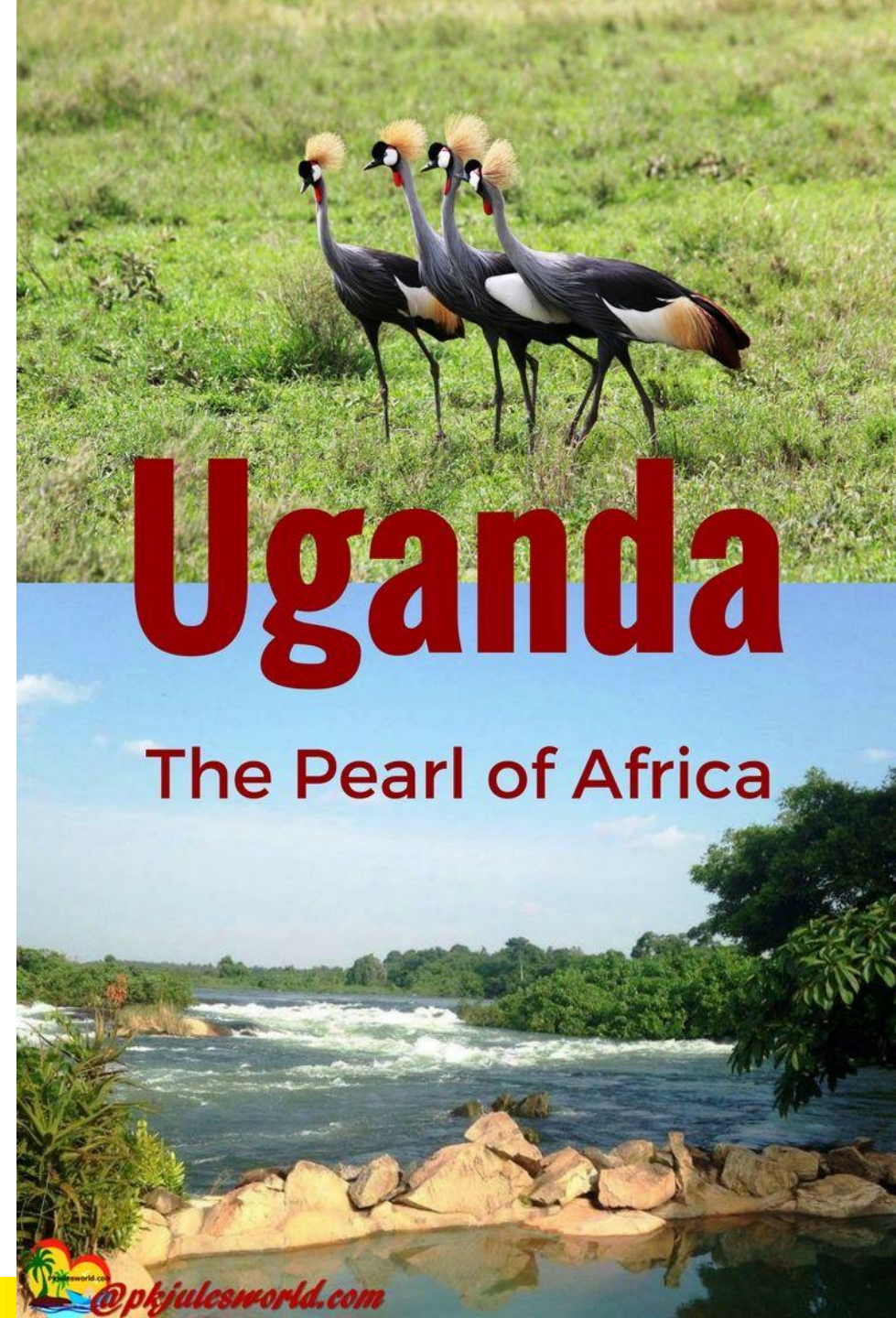
Regional growth of urbanized zones & Corridors constrained by agricultural clusters and natural resources

Form:

Polycentric settlement system in form of triangle of expressways & Physiography of natural and agricultural areas



- › The National Physical Development Plan provides the Spatial Framework required to guide government's aspirations of vision 2040 through ten 5 year National Development Plans (NDP)
- › We are currently Implementing the 3rd National Development Plan (NDP III)
- › As government prepares for NDP IV all Sector plans will be required to comply with the strategic proposition of the NPDP as part of its implementation



Territorial Connectivity through the NPDP

Two main relevant objectives

1) Maximizing Regional Balance and Equity

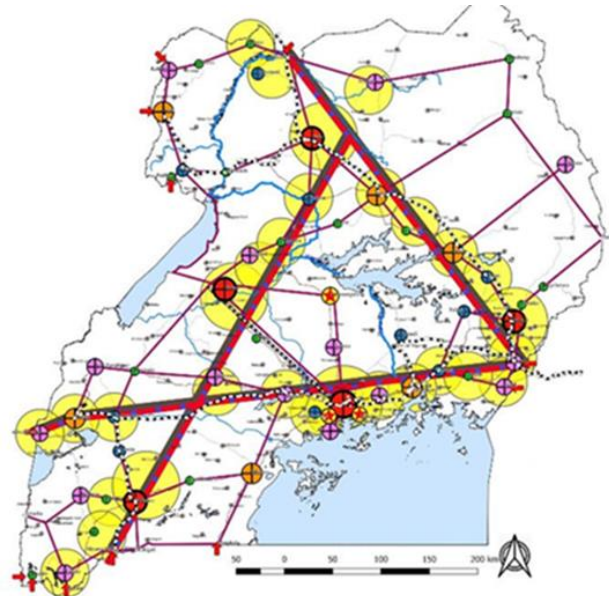
(Maximum dispersion of urban growth and maximum equality between sub-regions)

2) Maximizing the National Connectivity and Infrastructure provision

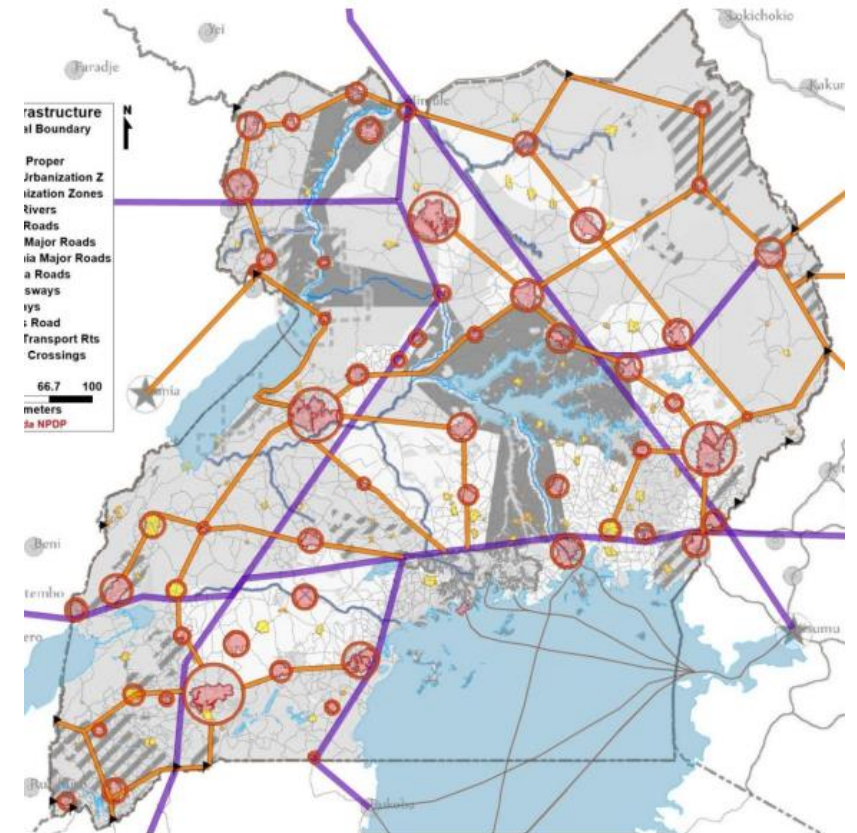
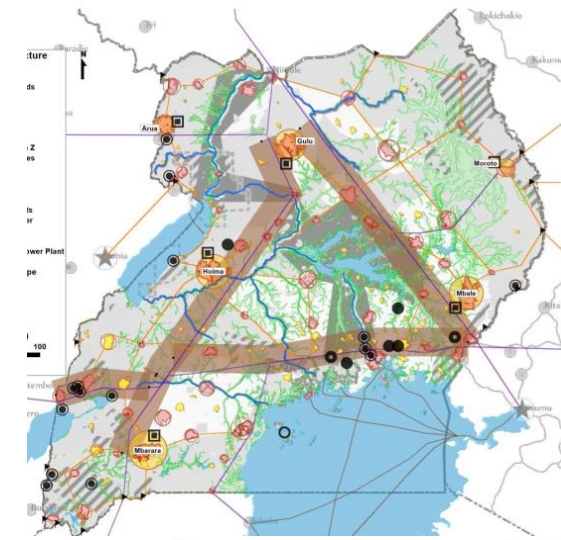
Maximizing Regional Balance and Equity

Strategies

- i. Strategic polycentric cities (10 cities already operational)
- ii. Infrastructure linking all the regional cities (Express ways, regional highways etc.)



... Infrastructure networks connecting & servicing the cities and other settlements & land uses





**GULU CITY
COUNCIL**

GOU Interventions on this Objective:



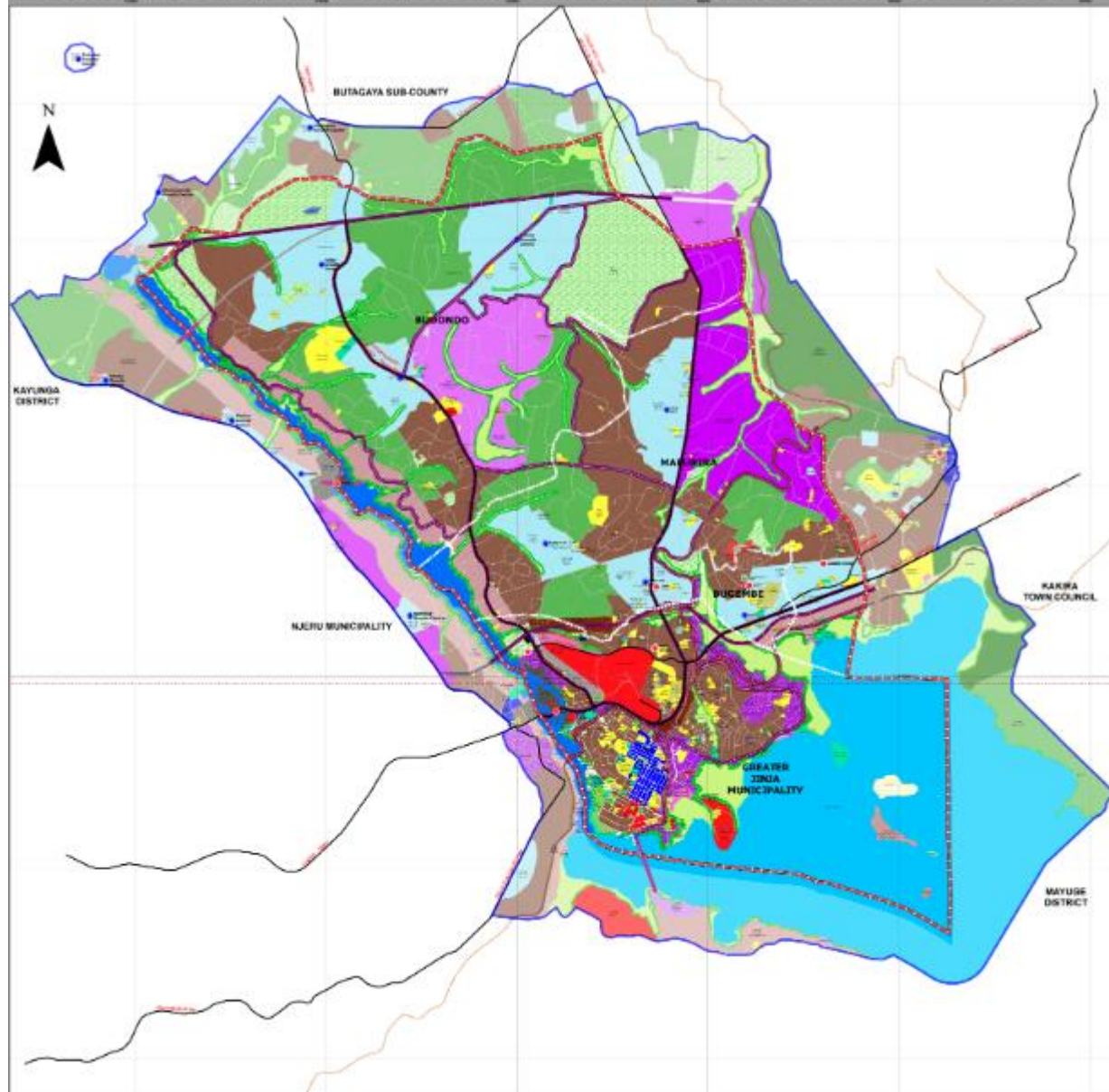
i. Preparation of City Physical Development Plans (3 approved)



ii. Upgrading of City Infrastructure with support from development partners (World Bank, EU, JICA, AfDB)



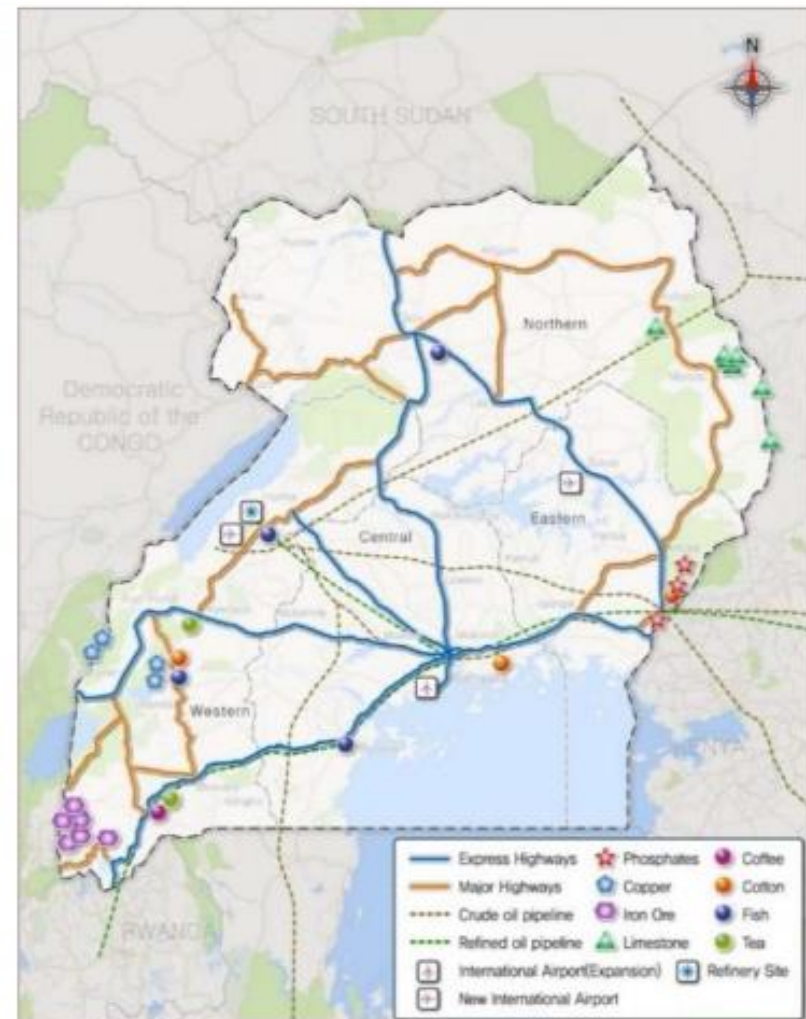
JINJA MODEL CITY PHYSICAL DEVELOPMENT PLAN 2022 - 2032



Maximizing the National Connectivity and Infrastructure provision

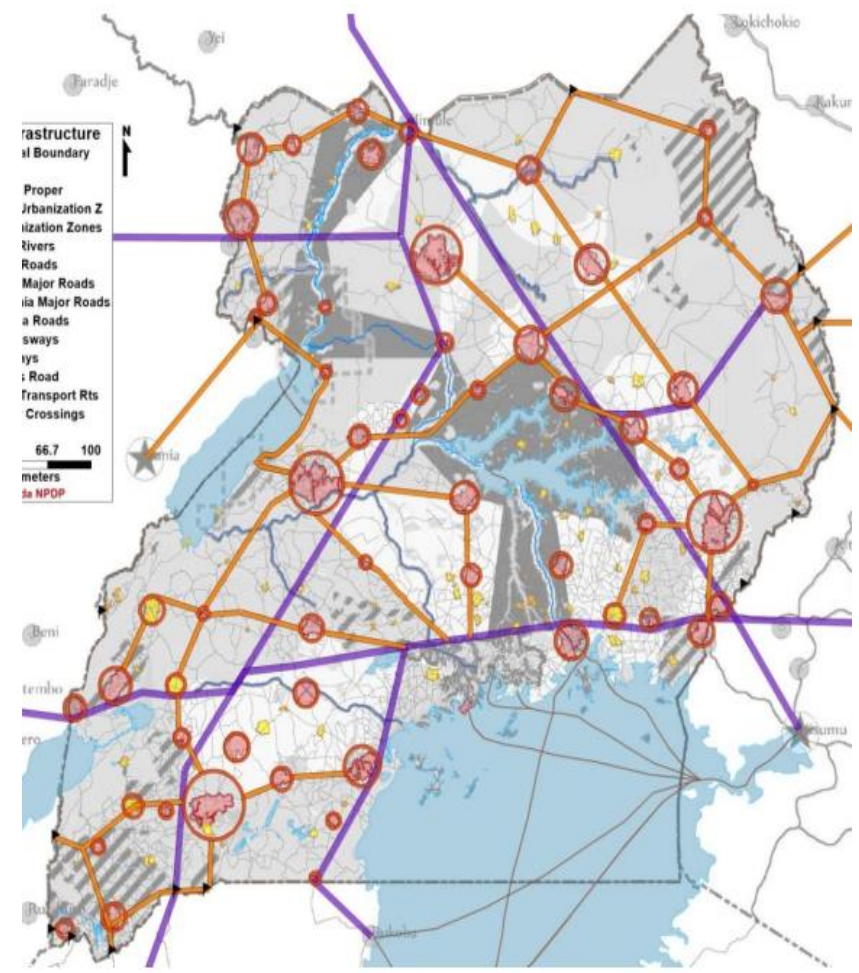
Strategies

- i. Emphasis on Efficient Public Transportation in urban areas.**
- ii. Establishment and construction of the National Expressway system & infrastructure corridors (roads, rail, utilities ...)**
- iii. Operationalization of Airports, both international and regional as well as airfields for domestic freights**
- iv. Inland Water Transport and construction of inland ports and harbor facilities**
- v. Making Water accessible to Households and for Agriculture**
- vi. Improvement and expansion of ICT sector.**



Source: Vision 2040

Vision 2040



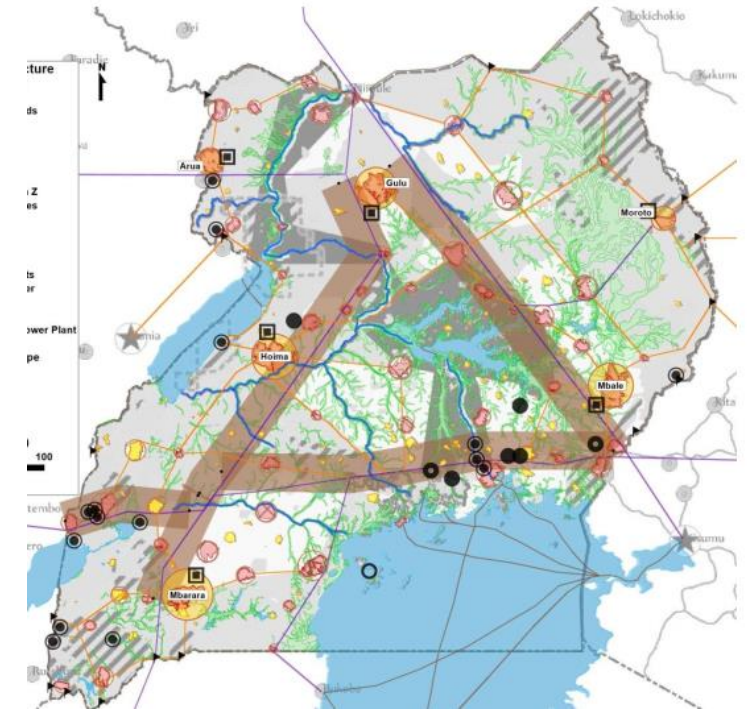
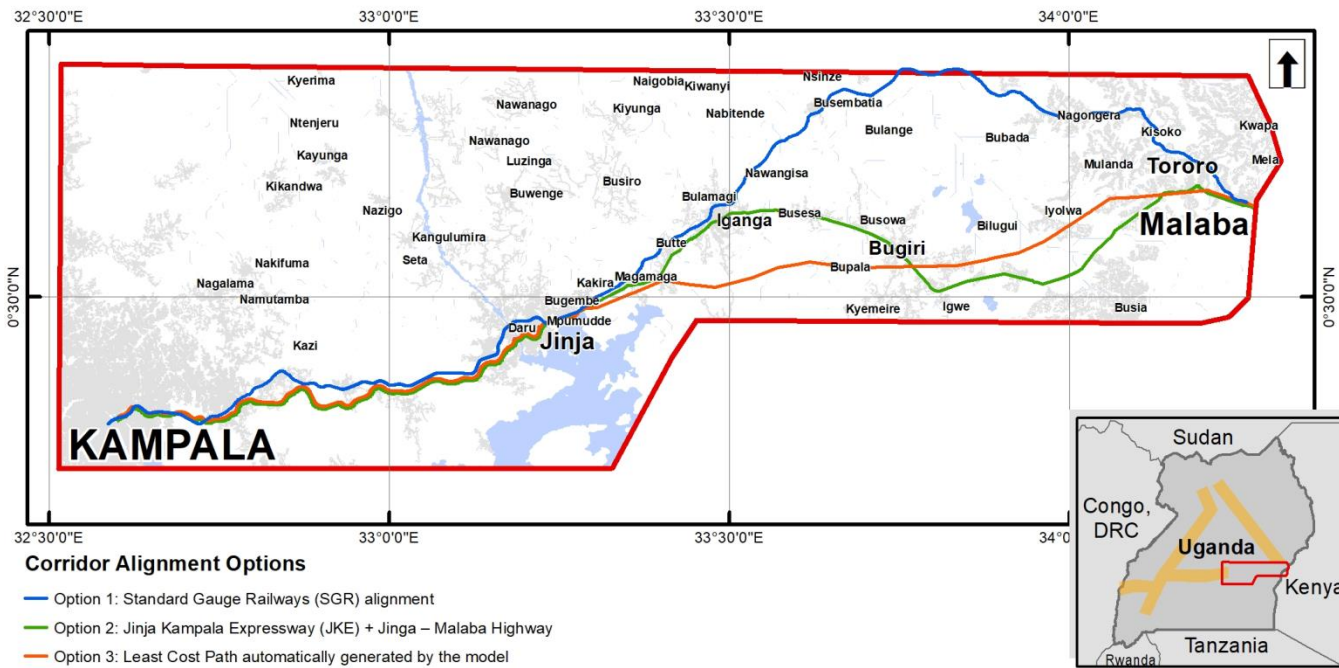
NPDP 2022-2040



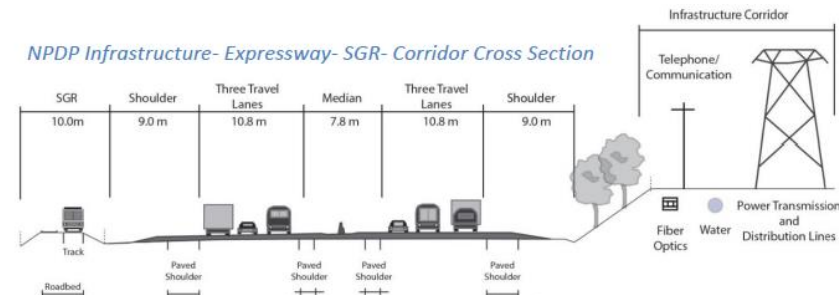
EDMP – up to 2070

(Expressway Development Masterplan)

Shared infrastructure Corridor, Pilot study on the Eastern arm from Kampala – boarder with Kenya



The NPDP recommends corridors of infrastructure network (including transport and utilities) which is based on the appropriate preservation of right of way along the major express way.



- Jinja-Kampala Expressway
 - Busega-Mpigi expressway
 - Kampala-Bombo Expressway
- Implementation of the EDMP Phase-1 (2022-2030)





Kabalega International airport



Kampala to Mombasa
in one day

[LEARN MORE](#)

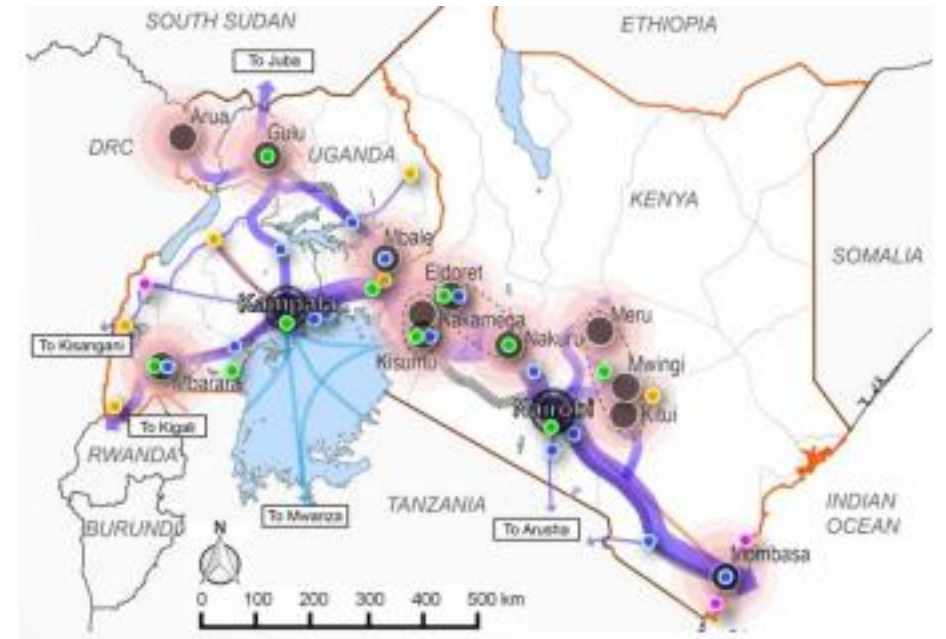
Kenya

Uganda

Uganda's strategic connectivity in the East African Region block

Northern Economic Corridor Development strategy

- › **Linking Production centres through secondary city development**
- › **Connecting industrial areas with logistics hubs**
- › **Modal shift from truck to railway and pipeline**





📷 ↗️ t 🐦 in f



VISITAFRICA.SITE



Visit Uganda



Breathtaking Africa
Visit The Pearl of Africa



Visit **AFRICA**
Destinations. Attractions

FOR GOD AND MY COUNTRY



Thank You