

An aerial view of Beijing, China, showing a mix of modern skyscrapers and traditional architecture. The CCTV New Building is prominent in the center. The foreground shows traditional Chinese buildings with orange roofs. The sky is blue with scattered white clouds.

Connectivity and Its Role in Spatial Governance of China

Wenlong LI

Kyoto University

Contents

1. Transportation Development



2. Spatial Planning History

Economic
Planning

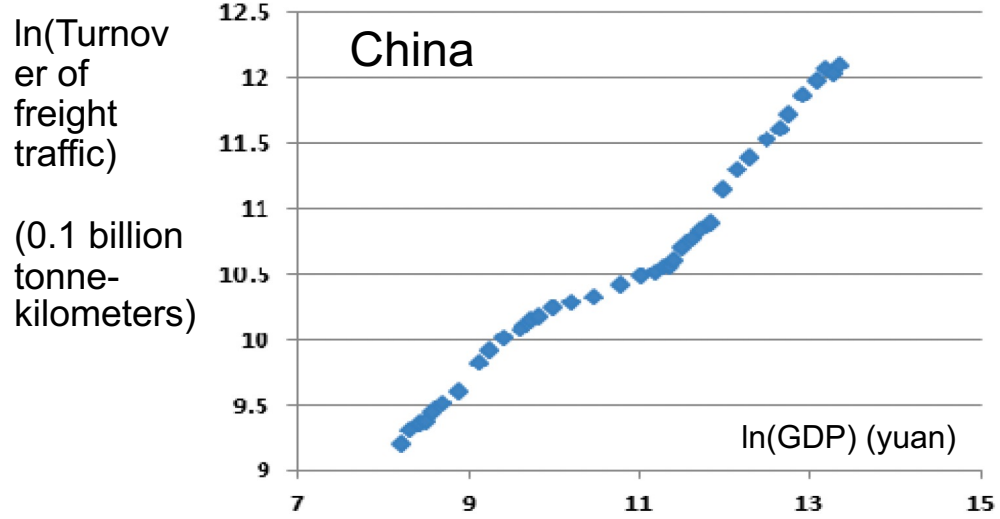
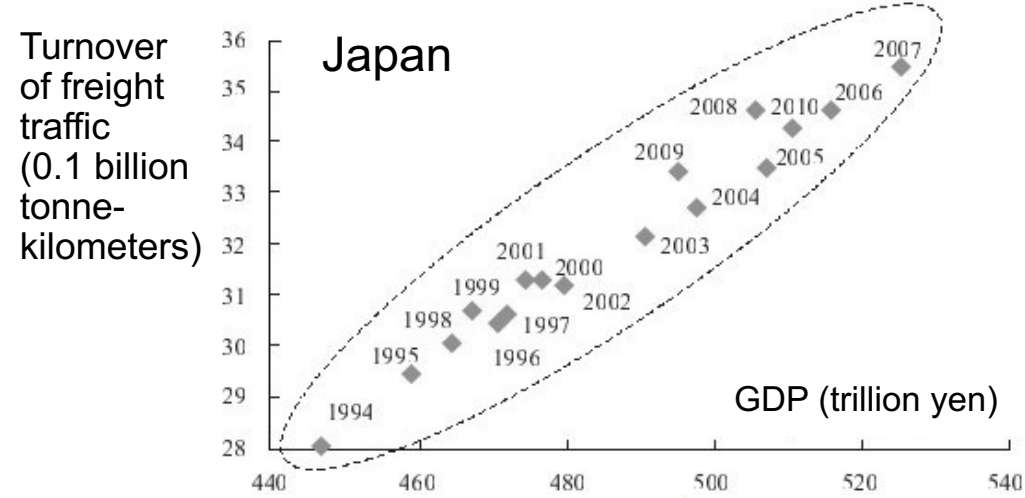
Territorial
Governance

Ecological
Governance

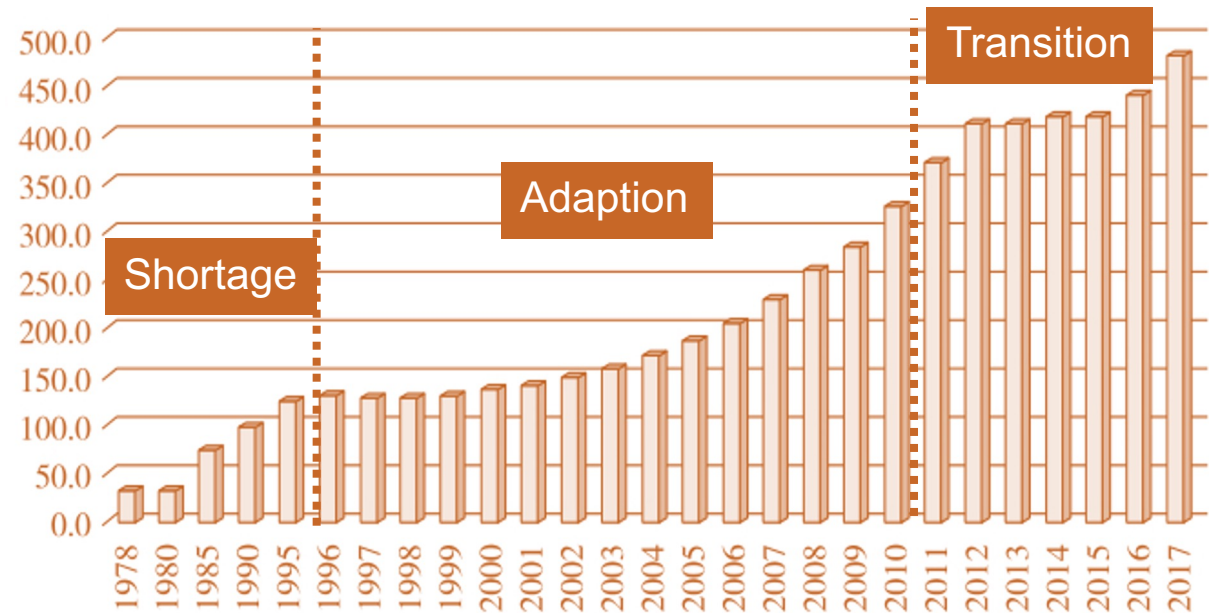
1.1 Importance of Transportation

Correlations between Turnover of freight traffic and GDP, Case of Japan and China

Correlation Coefficient: 0.986



China's Freight Traffic Over Time (0.1 billion tons)

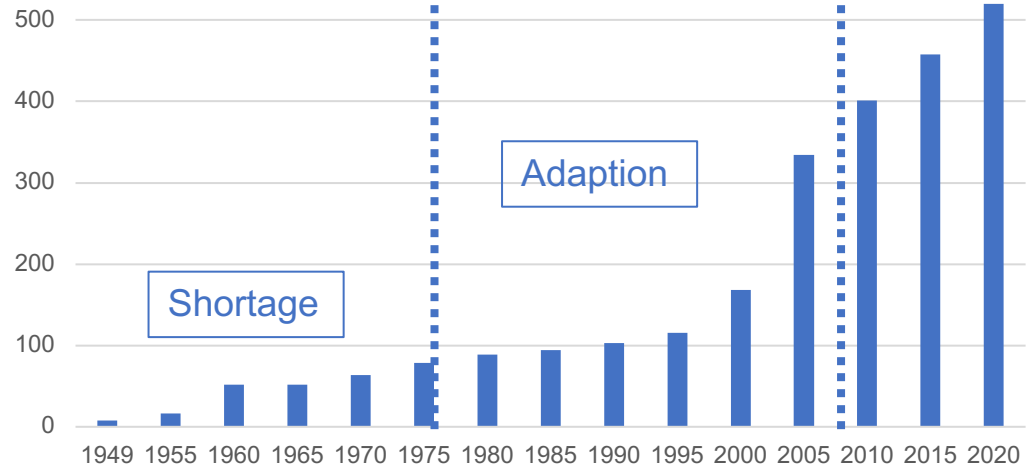


1.2 Transportation Development History

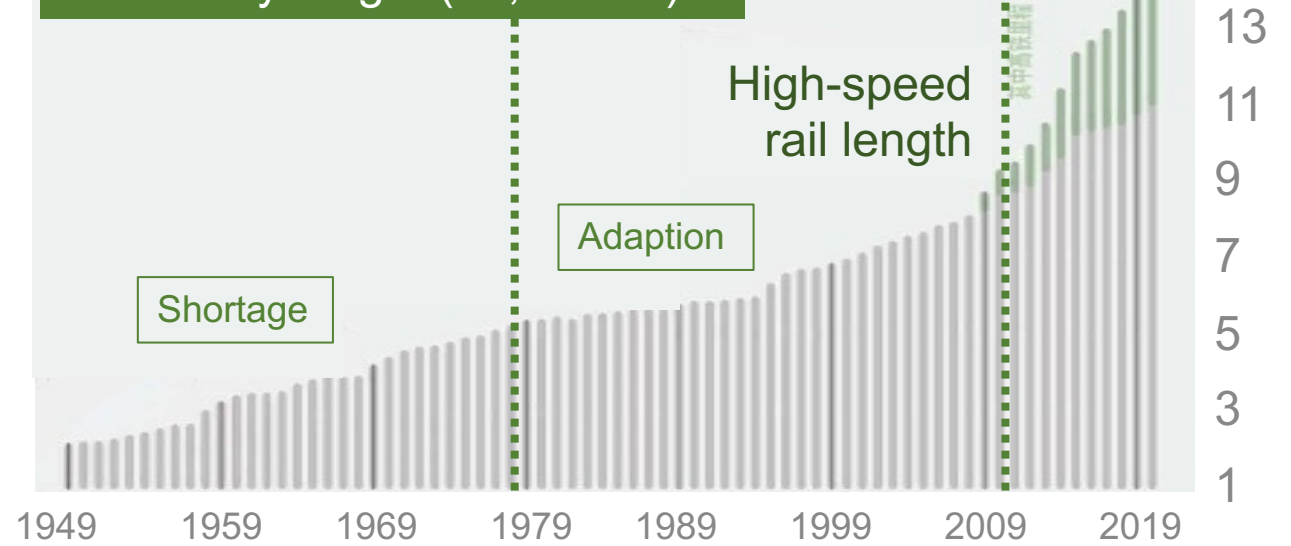
Year	1978 ~ 1995	1996 ~ 2010	2011 ~ Now
Transportation Development	[Shortage] Capacity constraints	[Adaptation] Gradually meet demand	[Transition] Improving quality
Transportation & Economy	Liberating the Economy	Driving the Economy	Leading the Economy
Average GDP growth	10%	10%	7%
Urbanization Rate	18%~29%	31%~50%	52% ~ 65%
5 Year National Plan	5 th ~8 th	9 th ~11 th	12 th ~14 th
Territorial Planning Concepts	Coastal & Inland Area	West, East, Middle, Northeast Area	Optimizing D. R.; Focusing D. R.; Restricted D. R.; Prohibited D. R.

1.3 Road & Railways

1. Road Length (10,000km)



3. Railway length (10,000km)



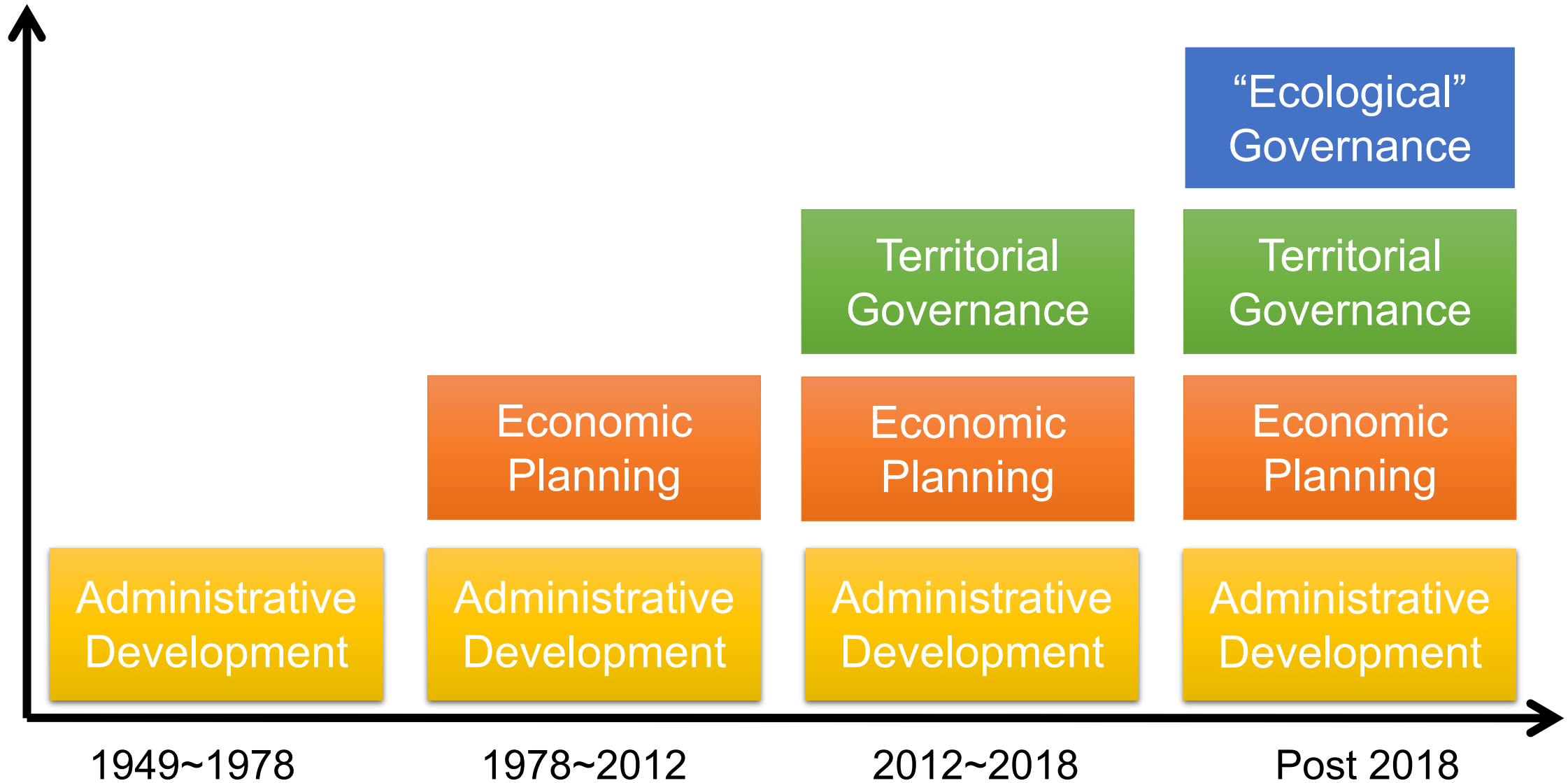
2. China's Motorway Development



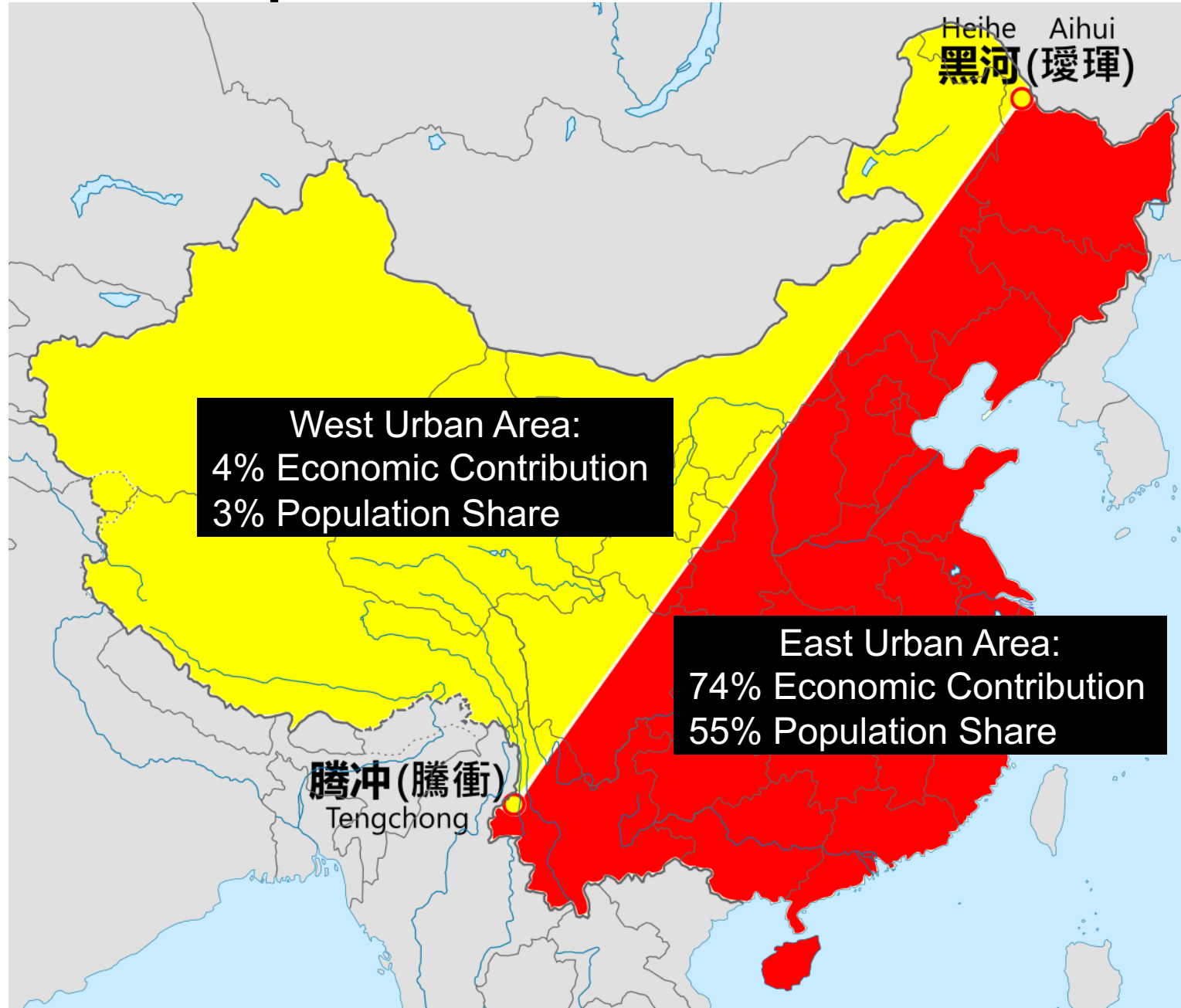
4. China's Railway Development



2.1 National Strategic Planning of China



2.2 Regional disparities within China



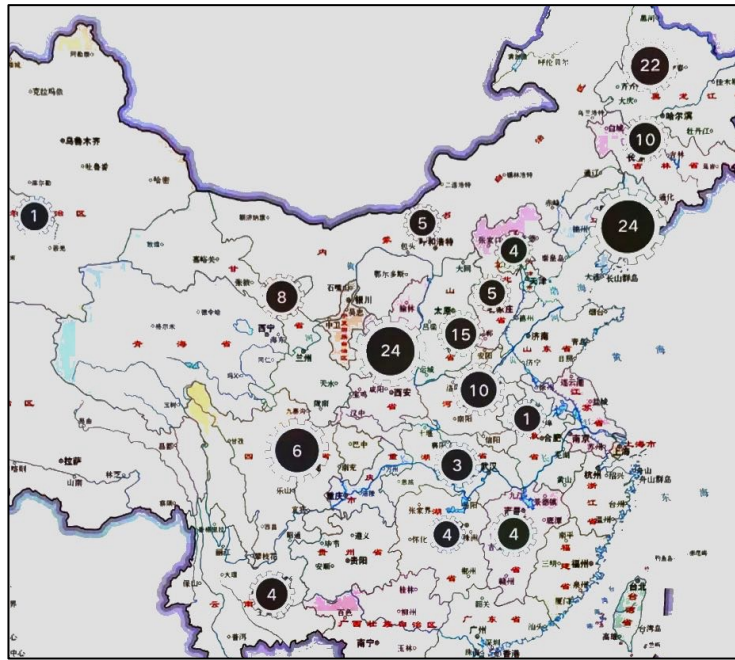
Heihe Aihui
黑河(爱辉)

West Urban Area:
4% Economic Contribution
3% Population Share

East Urban Area:
74% Economic Contribution
55% Population Share

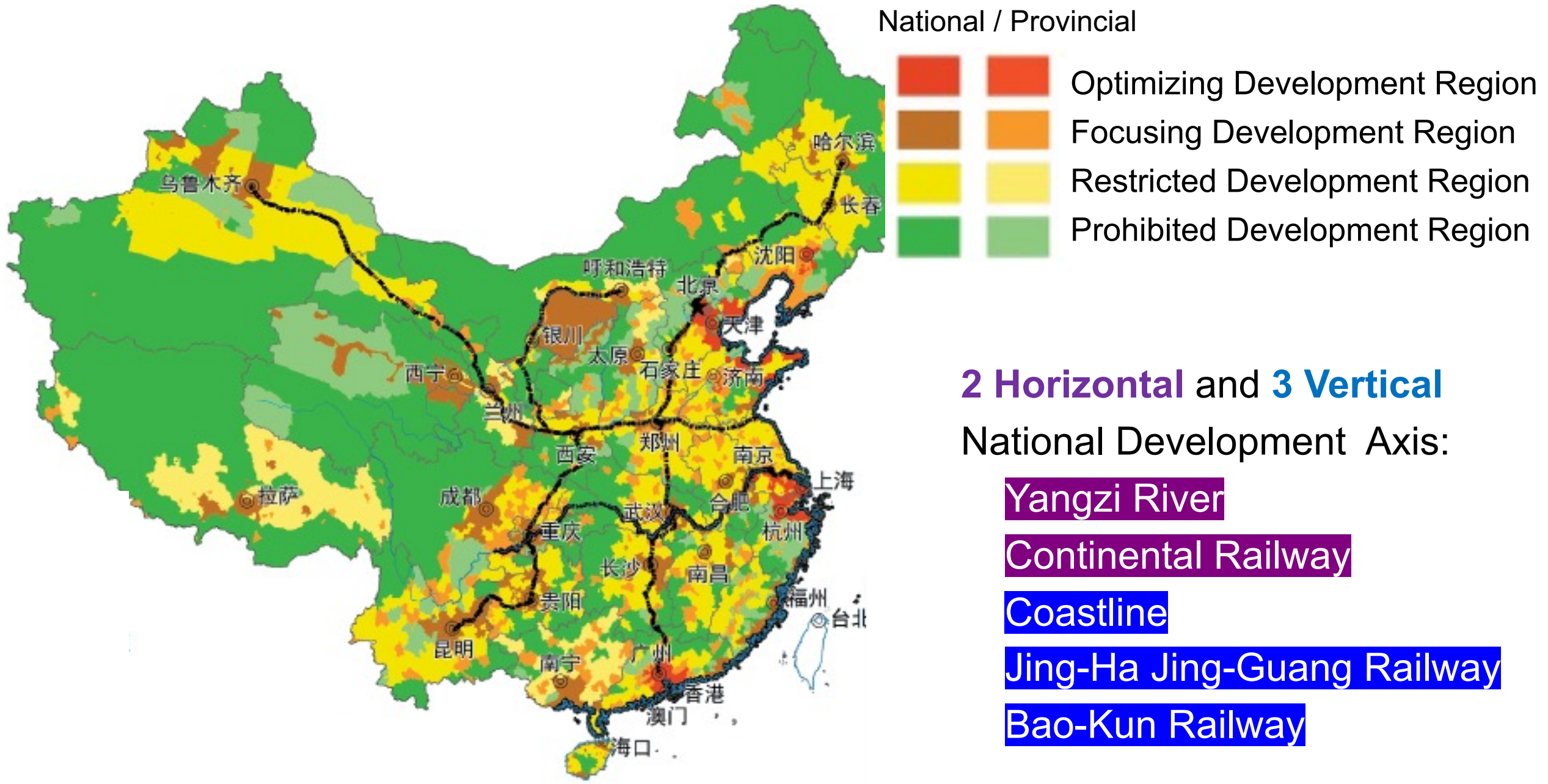
腾冲(腾冲)
Tengchong

2.3 Economic Planning History

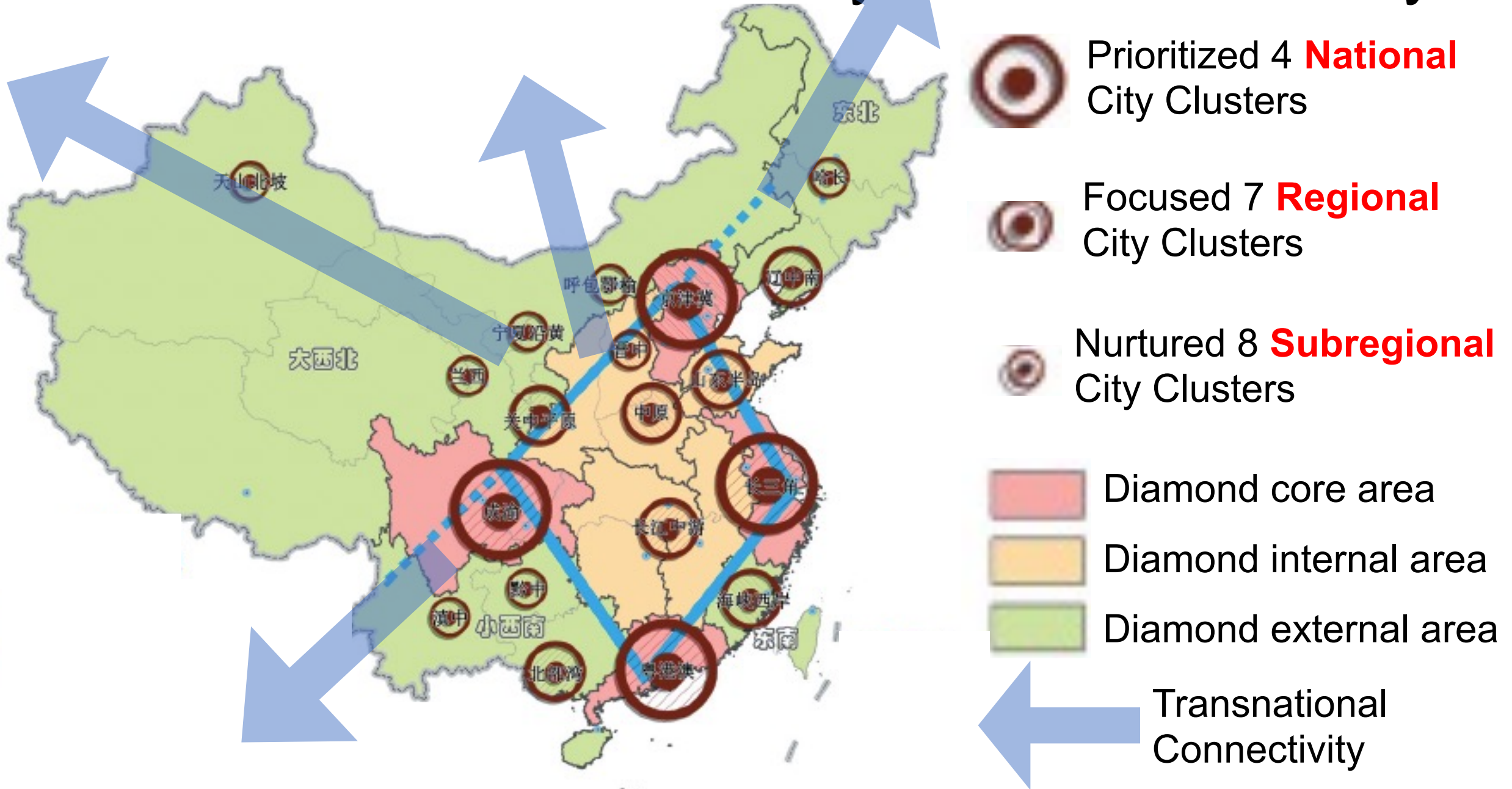


Year	1950s	1960s-70s	1980s-1990s	2000-2012
Characteristic	Balanced	Decentralized	Focused	Coordinated
Deployment Approach	National Projects Construction	National Corporates Relocation	Regional Policy	Market Mechanism
National Strategies	"156 Projects"	"Three Line Construction"	"Eastern Area Priority"	<ul style="list-style-type: none"> • Great Western Development • Rise of Central China • Revitalization of Northeast China
Territorial Plan	Coastal & Inland	1st, 2ed, 3rd Line	Coastal & Inland	West, East, Middle, Northeast Area

2.4 Territorial Governance (2012~)



2.5 Territorial Governance: City Clusters Hierarchy

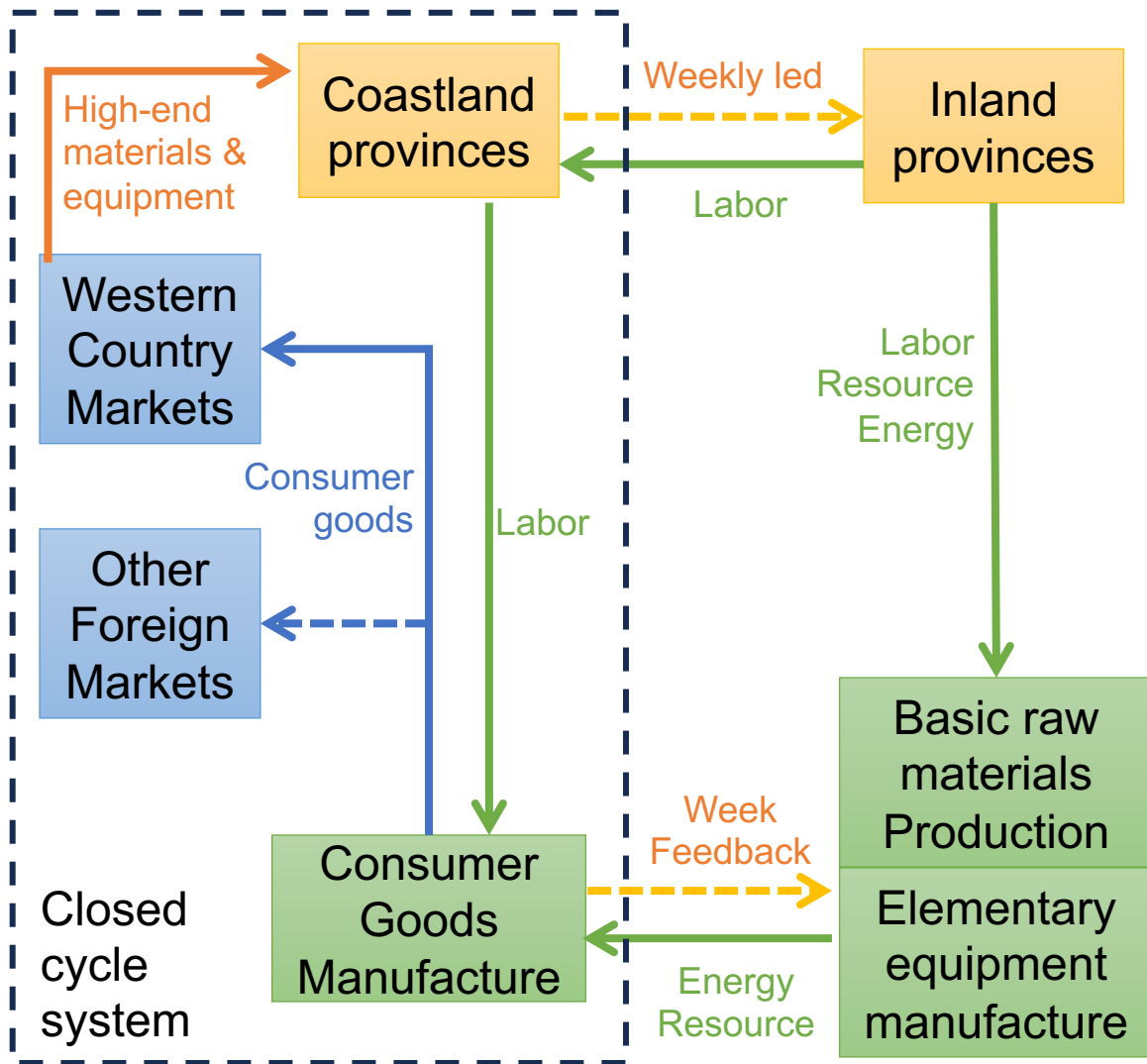


2.6 Territorial Governance: National to Transnational

Strategy: **Reform and Open up (1978 ~)**

Industry clustered in the east;

Orientated towards western markets

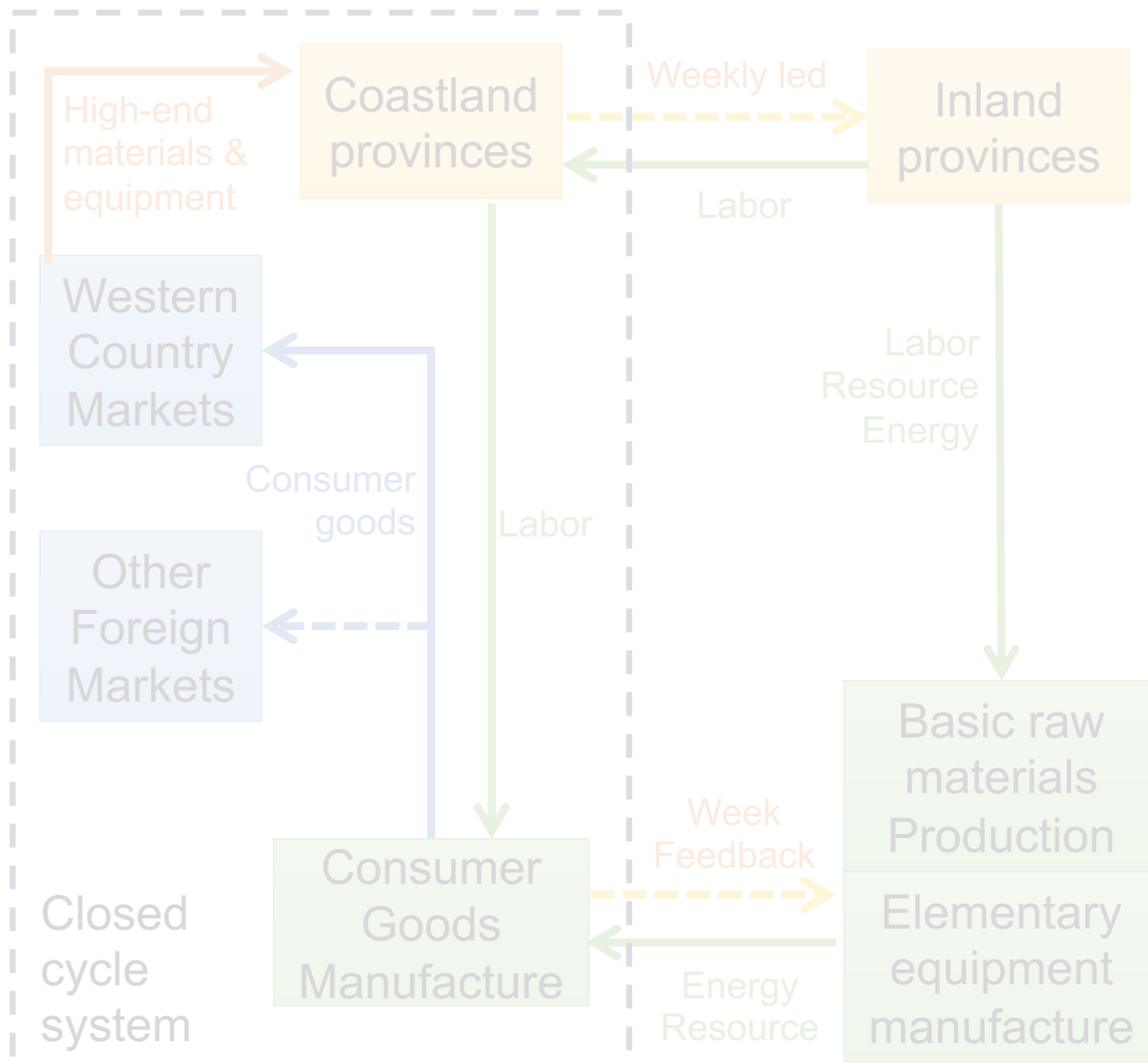


2.6 Territorial Governance: National to Transnational

Strategy: **Reform and Open up (1978 ~)**

Industry clustered in the east;

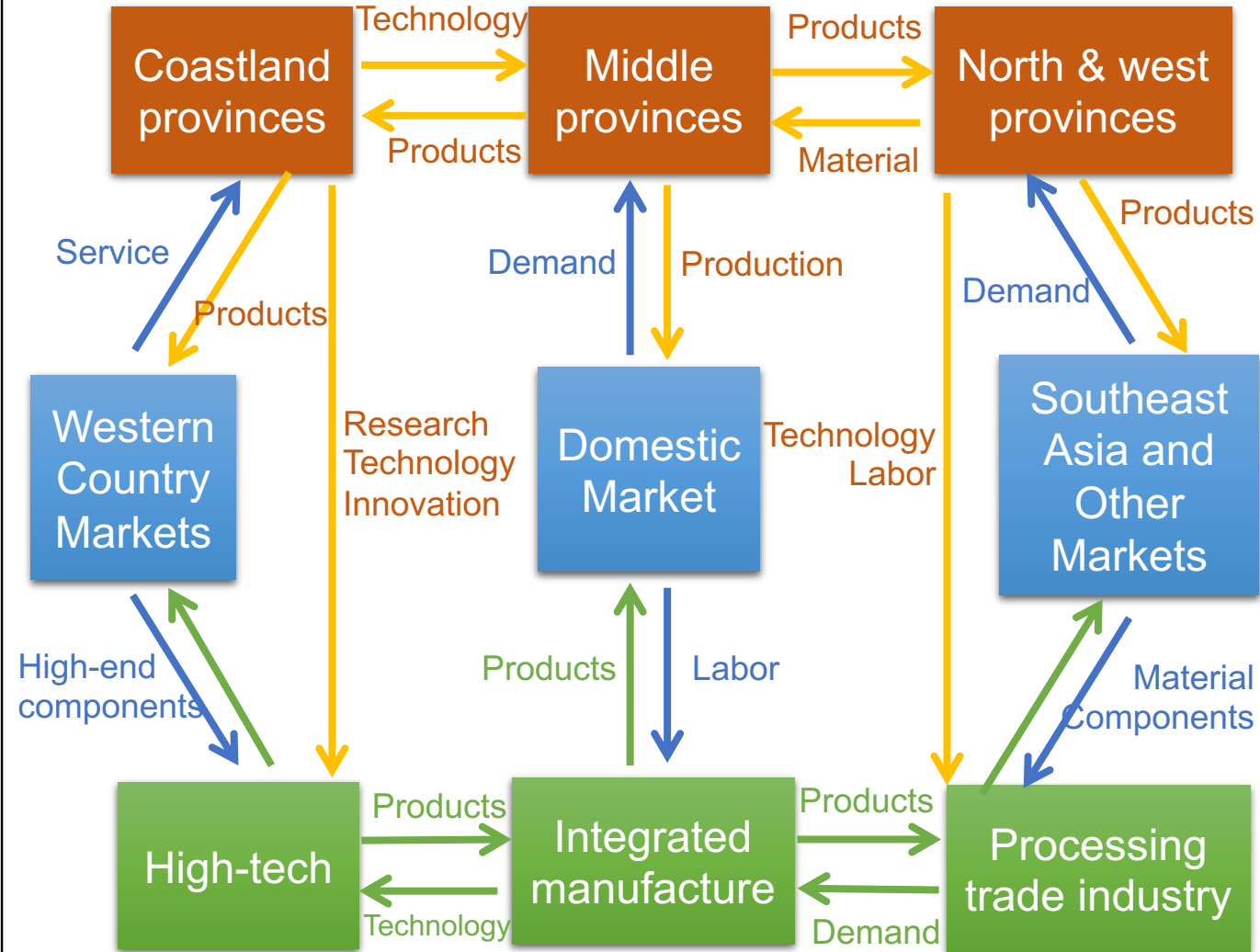
Orientated towards western markets



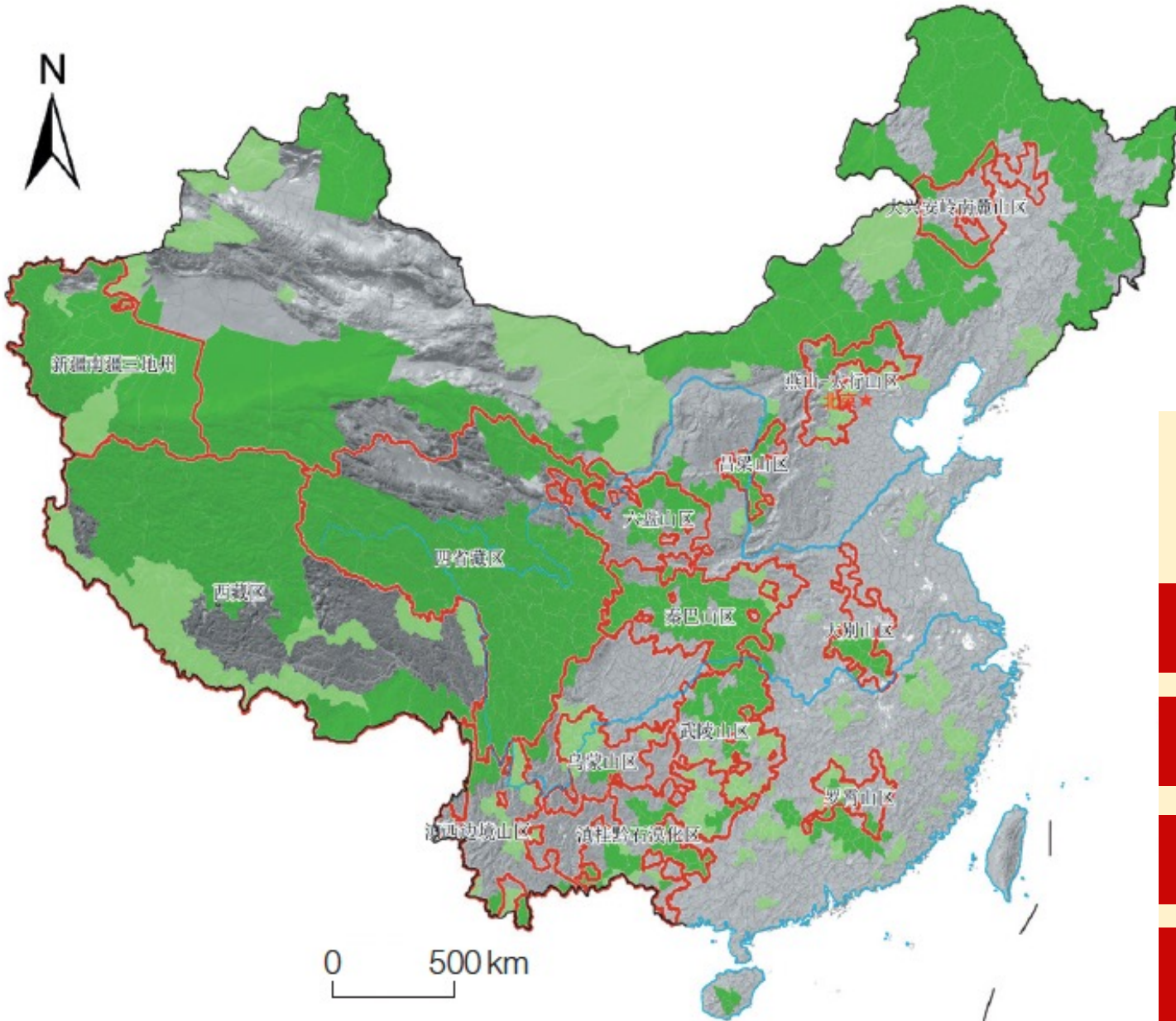
Strategy: **Belt and Road Initiative (2013 ~)**

Open up in both directions;

Balanced Industry Layout



2.7 Ecological Governance



Contiguous Poverty Area

National Key Ecological Area

First Issued in 2010

Added in 2016

Promote ecological and resource advantages for Poor Region

Biological resources

Agriculture

Agricultural resources

Tourism

Cultural resources

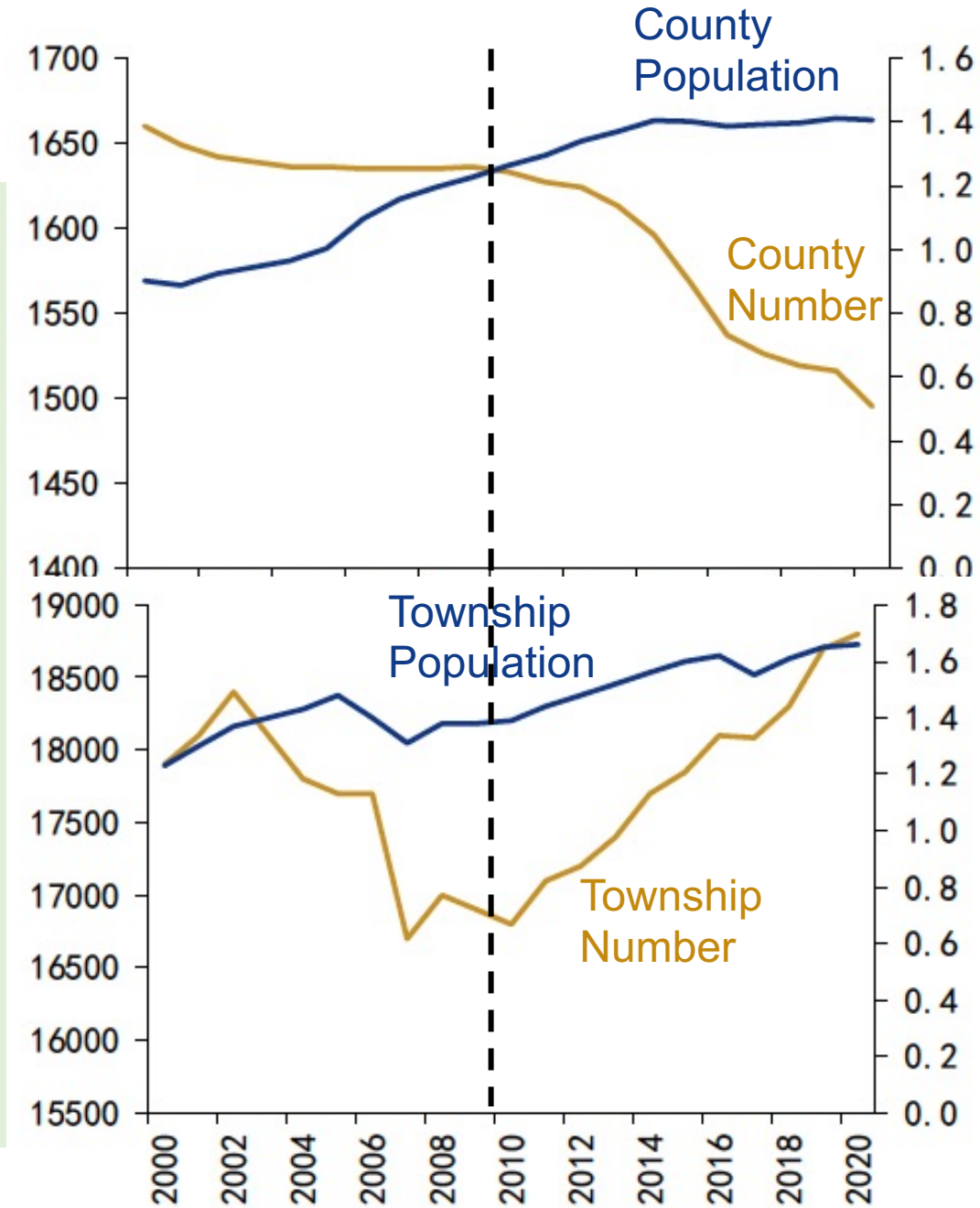
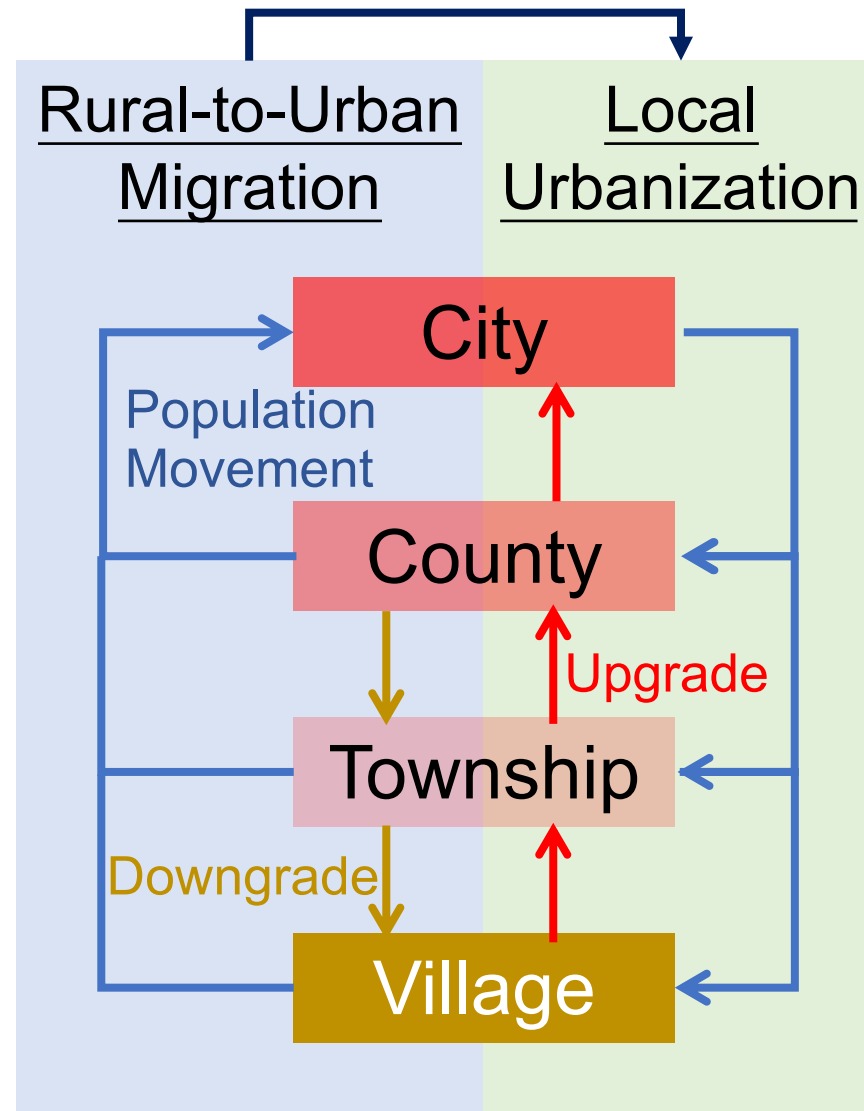
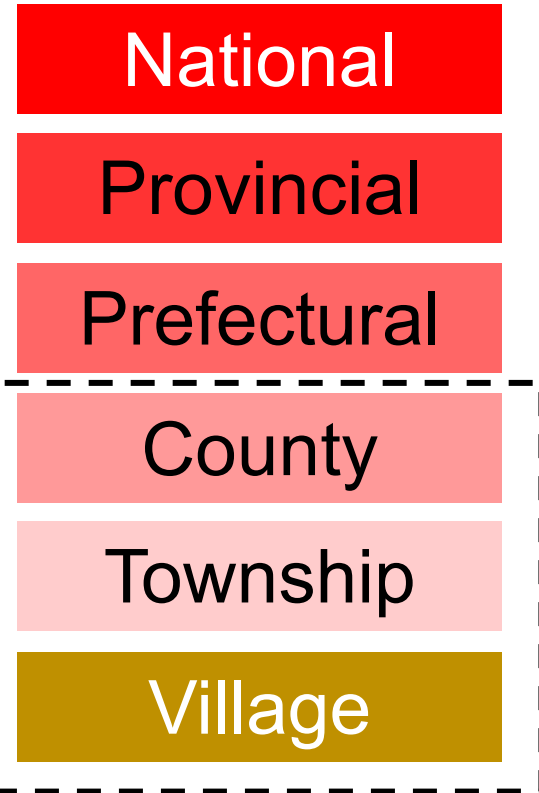
Green Economy

Energy & Mining resources

biopharmaceutical industry


2.8 Rural Revitalization

Administrative divisions in China



3. Paradigm shift ?

Dimensions	Urbanization Until 2018	Paradigm Shift ?
Trends	Urban-Rural wealth disparities → Inner-city wealth disparities	Urban affluence feeds back into rural areas
People, Goods, Money Flow	Rural to Urban	Mutual Flow
Development Focus	Urban economic development	Coordinated development in economy, culture, and ecology
Outcomes	Increasing Urban-Rural Disparity	Leaving no place and no one behind
Urbanization Standards	Urban population's percentage	Degree of urban-rural Integration

A nighttime photograph of a cityscape, likely Taipei, Taiwan. The foreground features a large, multi-tiered pagoda with a red roof and golden accents, illuminated and situated on a small island in a lake. The middle ground is filled with a dense urban landscape of various buildings, some with lights on. In the background, a large mountain is visible under a dark blue sky. The overall scene is captured in a cool, blue-toned color palette.

Thank you for your attention!

References

1. Implementation Programme for New Urbanisation under the 14th Five-Year Plan, National Development and Reform Commission (NDRC), Government of China. 2022.
2. Cao Xiaoqian, Overview and analysis of the 14th Five-Year Plan for the Implementation of New Urbanism. Fareast Credit, 2022.
3. Collection Papers for Regional Development Strategy and Spatial Governance of China 14th Five-Year Plan, Journal of Chinese Academy of Sciences. 2020, Vol.35-7:
 - WANG Kaiyong, CHEN Tian. Discussion on Administrative Divisions Adjustment and Spatial Governance in 14th Five-Year Plan Period.
 - GUO Rui, SUN Yong, FAN Jie. Policies on Categorized Governance of China's Urban Agglomerations in 14th Five-Year Plan.
 - WANG Yafei, GUO Rui, FAN Jie. Evolution Analysis of China's Spatial Development Structure and Pattern Optimization of Major Function Zones.
 - ZHOU Kan, SHENG Kerong, FAN Jie, LIU Hanchu, WU Jianxiong. Connotation of High-quality Development in Relative Poverty Areas of China and Implementation Strategy.
 - LI Jiaming, ZHANG Wenzhong, YU Jianhui. Historical Evolution of China's Major Productive Forces and Optimization Strategy During 14th Five-Year Plan.