



NUSANTARA
Capital Authority
Republic of Indonesia



IKATAN AHLI
PERENCANAAN
INDONESIA **IAP**

Spatial Plan of Nusantara Capital City

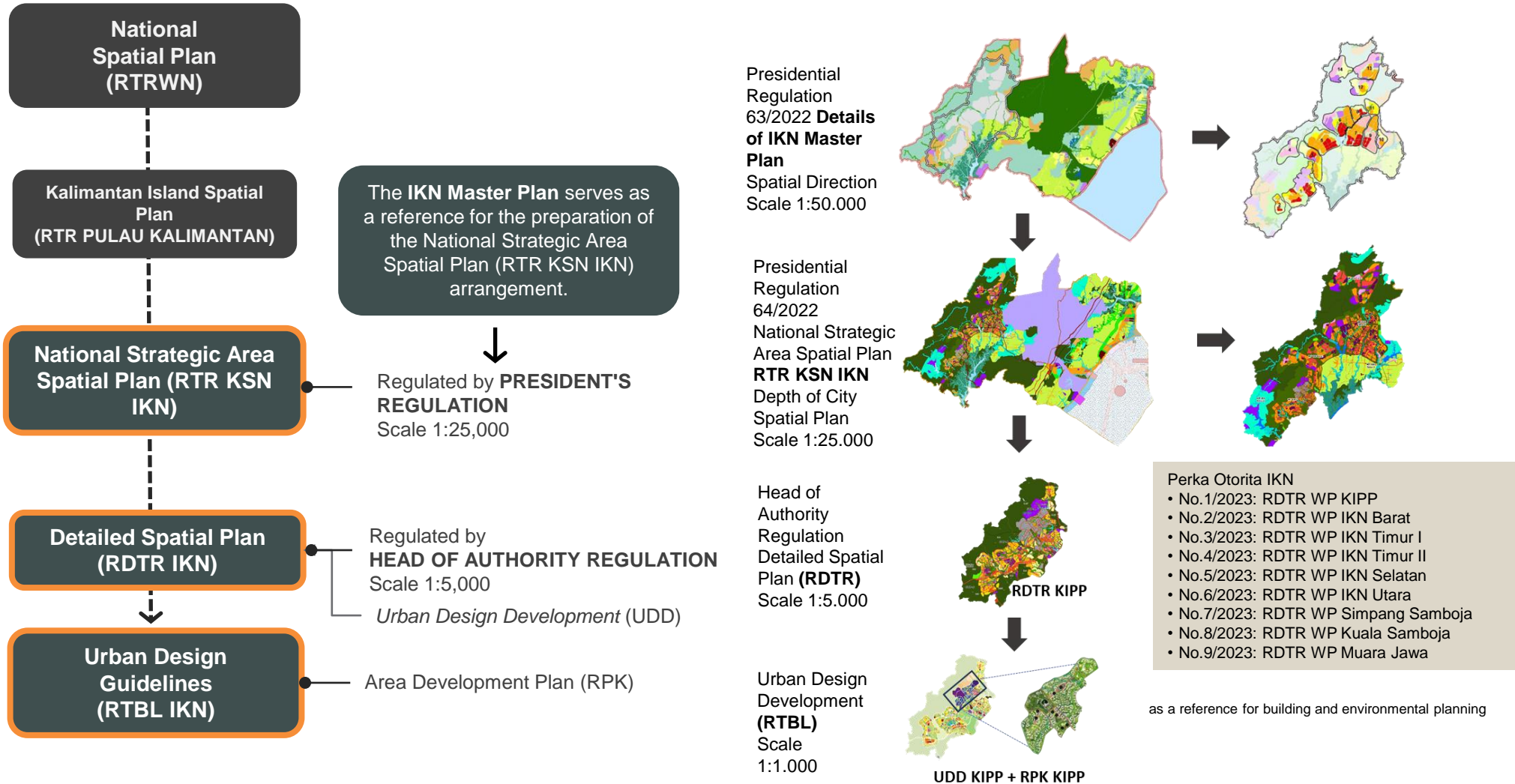
Coexistence of Urban and Rural Areas in Nusantara Spatial Planning

6th Spatial Planning Platform (SPP) Conference
Balikpapan, November 2023

Mia Amalia, S.T., M.Si, Ph.D.

Deputy for Planning and Land Affairs
Nusantara National Capital Authority (OIKN)

Planning Hierarchy for the Nusantara Capital City



KPI for Nusantara

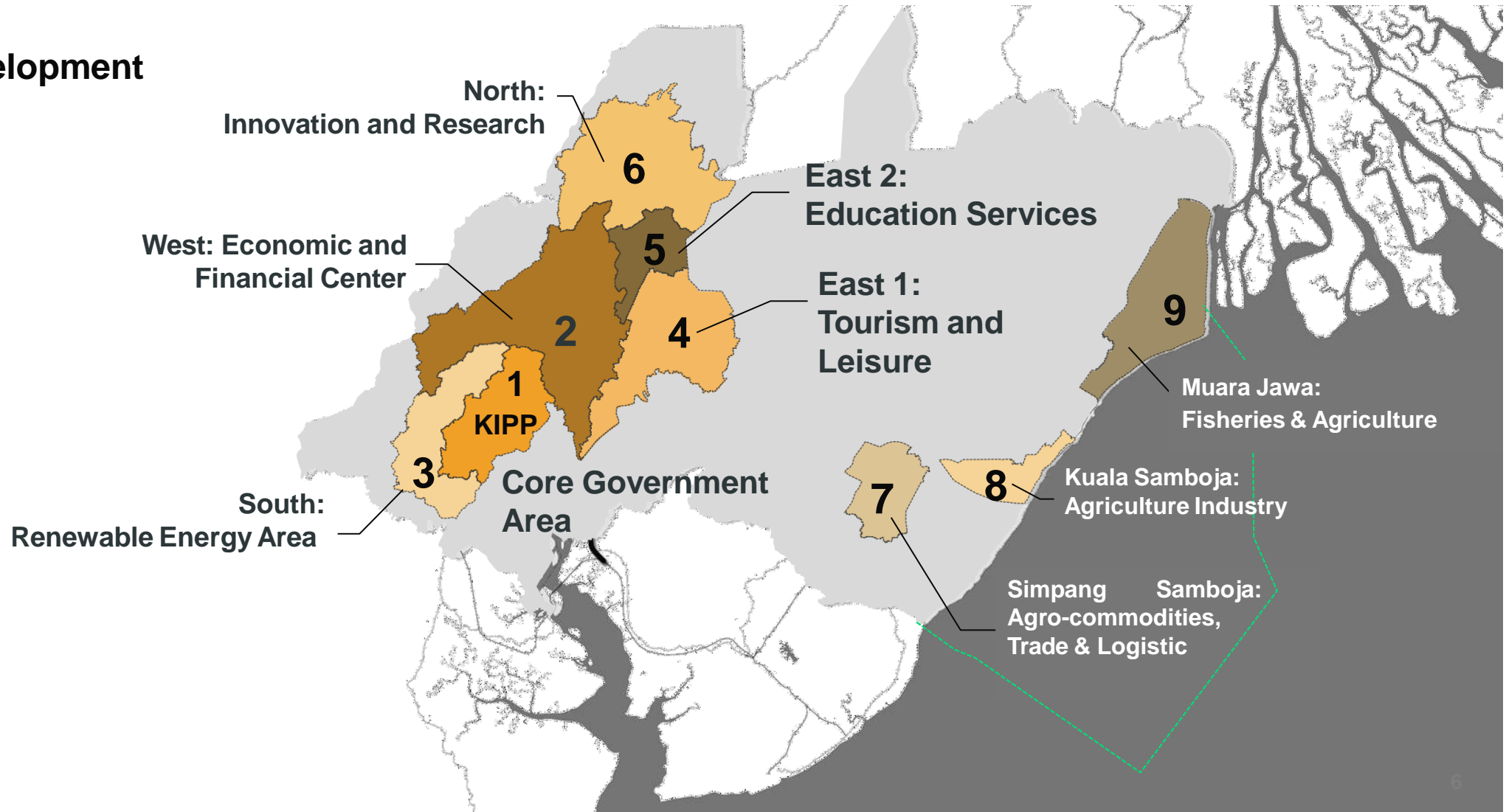


1. Designing with Nature	2. Unity in diversity	3. Connected, Active and Accessible	4. Net Zero Emission IKN	5. Circular and Resilient	6. Safe & Affordable	7. Convenience and efficiency through technology	8. Robust economic opportunity for all
<p>1.1 >75% of the 256 thousand Ha area for green space (65% protected area and 10% food production)</p> <p>1.2 100% of residents can access recreational green space in 10 minutes</p> <p>1.3 100% green replacement of building footprint > 4 stories (institutional, commercial, and residential building)</p>	<p>2.1 100% integration of all communities</p> <p>2.2 100% of residents can access to social/community services within 10 minutes</p> <p>2.3 100% public spaces designed using universal access, local wisdom and inclusive design principles</p>	<p>3.1 80% of all trips made by public transport or active mobility</p> <p>3.2 10 minutes to key amenities and public transport nodes</p> <p>3.3 <50 minutes Express transit connection from KIPP to strategic airport by 2030</p>	<p>4.1 The installation of renewable energy capacity will meet 100% of the Nation's Capital Energy Needs.</p> <p>4.2 60% energy savings for energy conservation in buildings</p> <p>4.3 Net zero emission for IKN for 2045 at 256 thousand Ha</p>	<p>5.1 >10% of 256 thousand Ha is available for food production</p> <p>5.2 60% recycling solid waste generation by 2045</p> <p>5.3 100% of wastewater will be treated through the treatment system by 2035</p>	<p>6.1 Ranking in the top 10 most livable cities in the world by 2045</p> <p>6.2 Existing and planned settlements in the 256 thousand Ha area will have access to critical infrastructure by 2045</p> <p>6.3 Decent, safe, and affordable housing that meets a balanced occupancy ratio</p>	<p>7.1 IKN will achieve a very high ranking in the E-Government Development Index (EGDI) by the United Nations.</p> <p>7.2 100% digital and ICT connectivity for all residents and businesses</p> <p>7.3 >75% Business Satisfaction with Digital Services rating</p>	<p>8.1 0% poverty in the IKN population by 2035</p> <p>8.2 GRDP per capita of high income country</p> <p>8.3 Lowest regional GINI ratio in Indonesia by 2045</p>

11, 15	1,3,5, 6,7, 9, 11, 12, 16	11	11, 13	2, 6, 11, 12, 14	9, 11, 16, 17	9, 17	1, 8, 9, 10, 11, 12, 14, 16, 17
Relevance to Sustainable Development Goals							

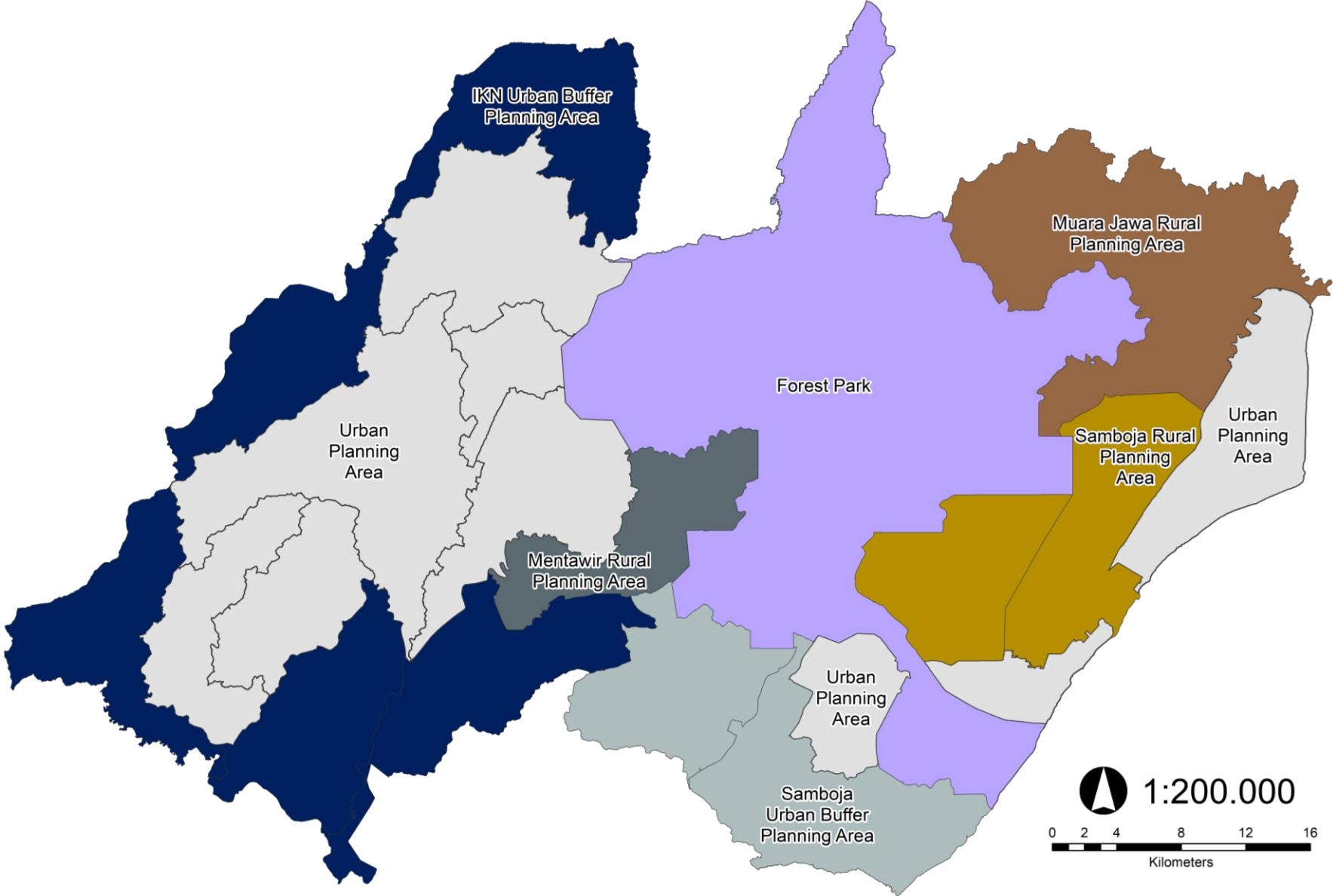
9 Economic Development Areas

IKN development areas¹



1. General theme only, each area will host more diverse and balanced functions: West – nature tourism, health services, higher education; South – rural settlements; East 1 – sports center, trade & services, higher education, defense; East 2 – Offices, health services, trade & services; North – tourism, offices

Nusantara Spatial Plan



Urban Area (WP Perkotaan)

- Urban Planning Area

Rural Area (WP Pedesaan)

- Mentawir Rural Planning Area
- Muara Jawa Rural Planning Area
- Samboja Rural Planning Area

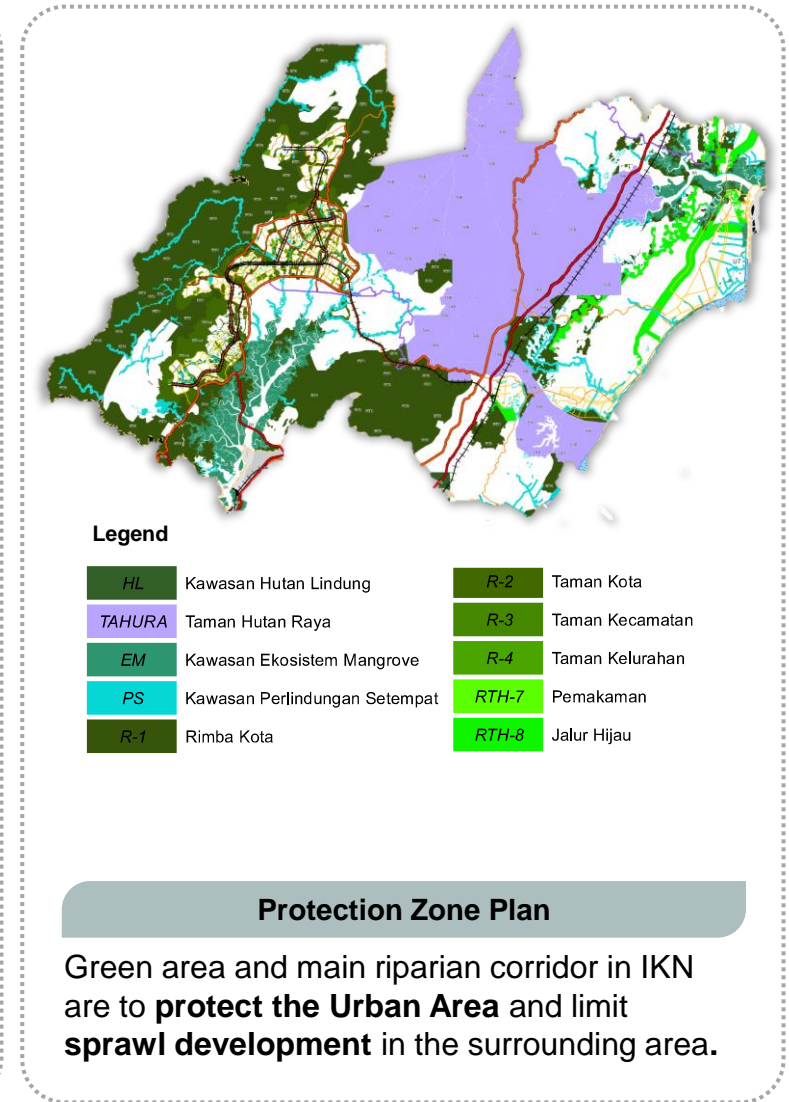
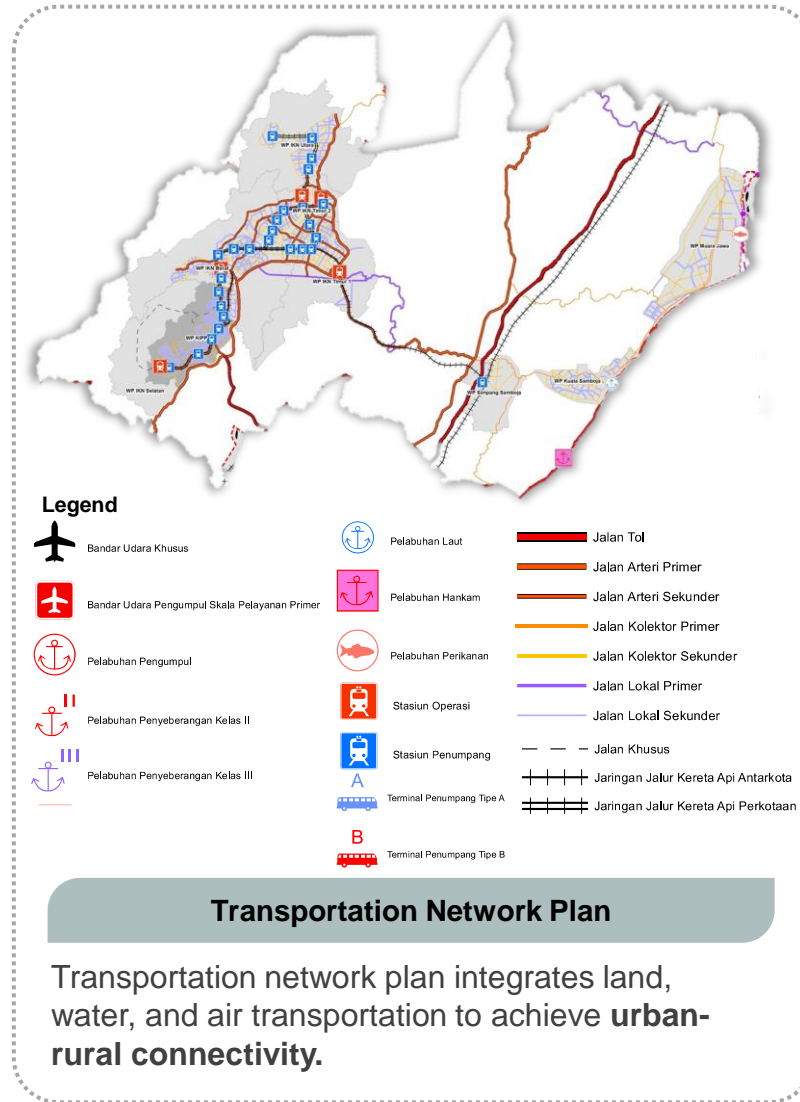
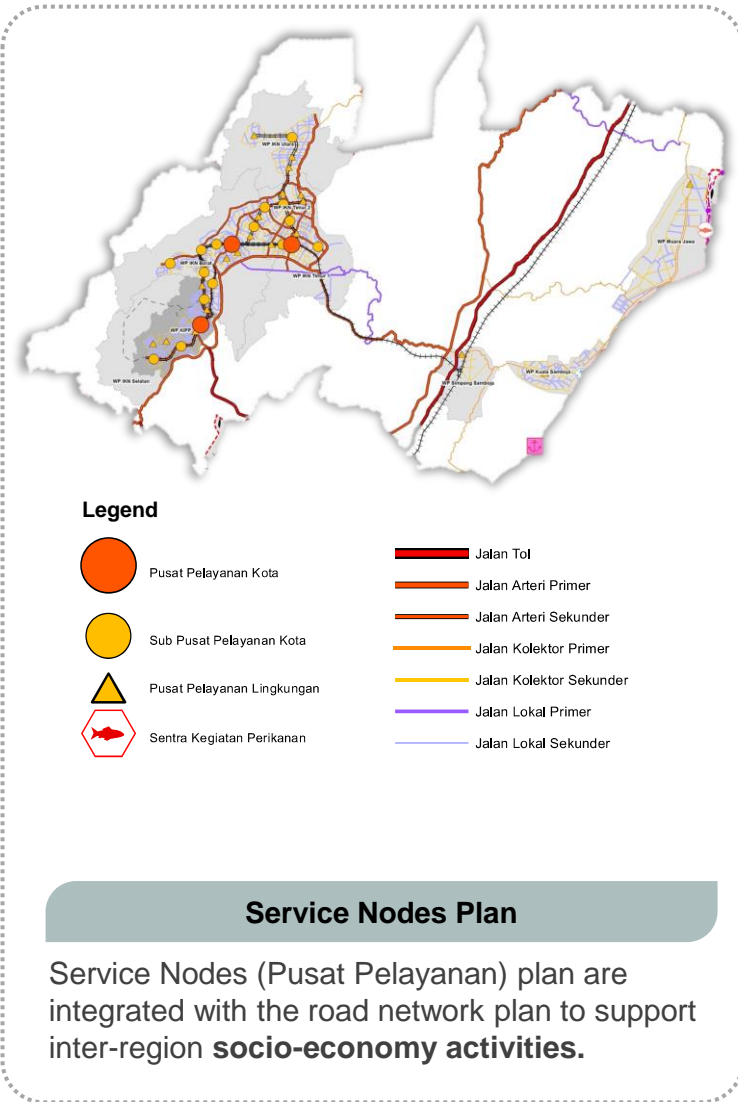
Buffer Area (WP Penyangga)

- IKN Urban Buffer
- Samboja Urban Buffer
- Forest Park

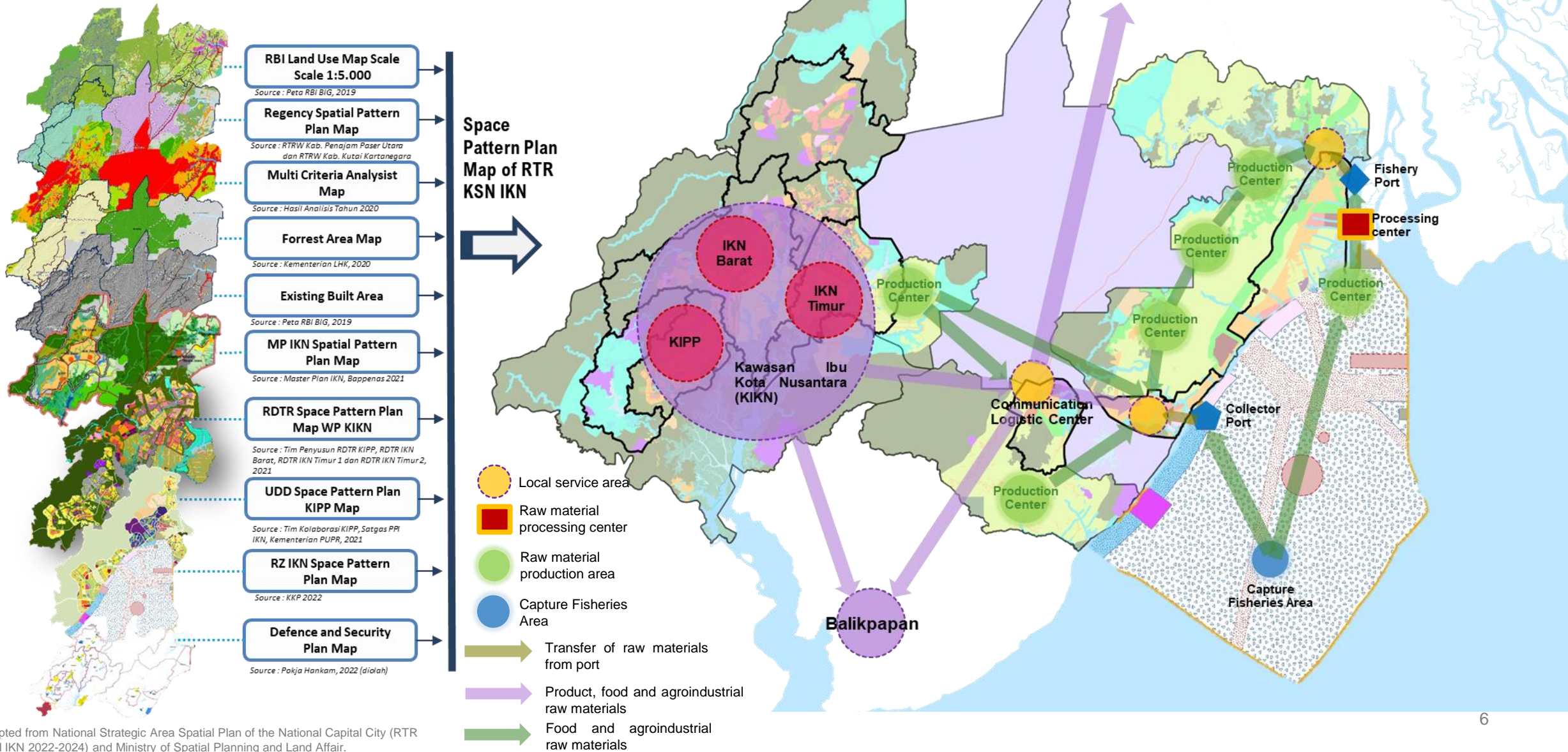


Adapted from National Strategic Area Spatial Plan of the National Capital City (RTR KSN IKN 2022-2024).

Urban-rural linkages Nusantara Spatial Plans

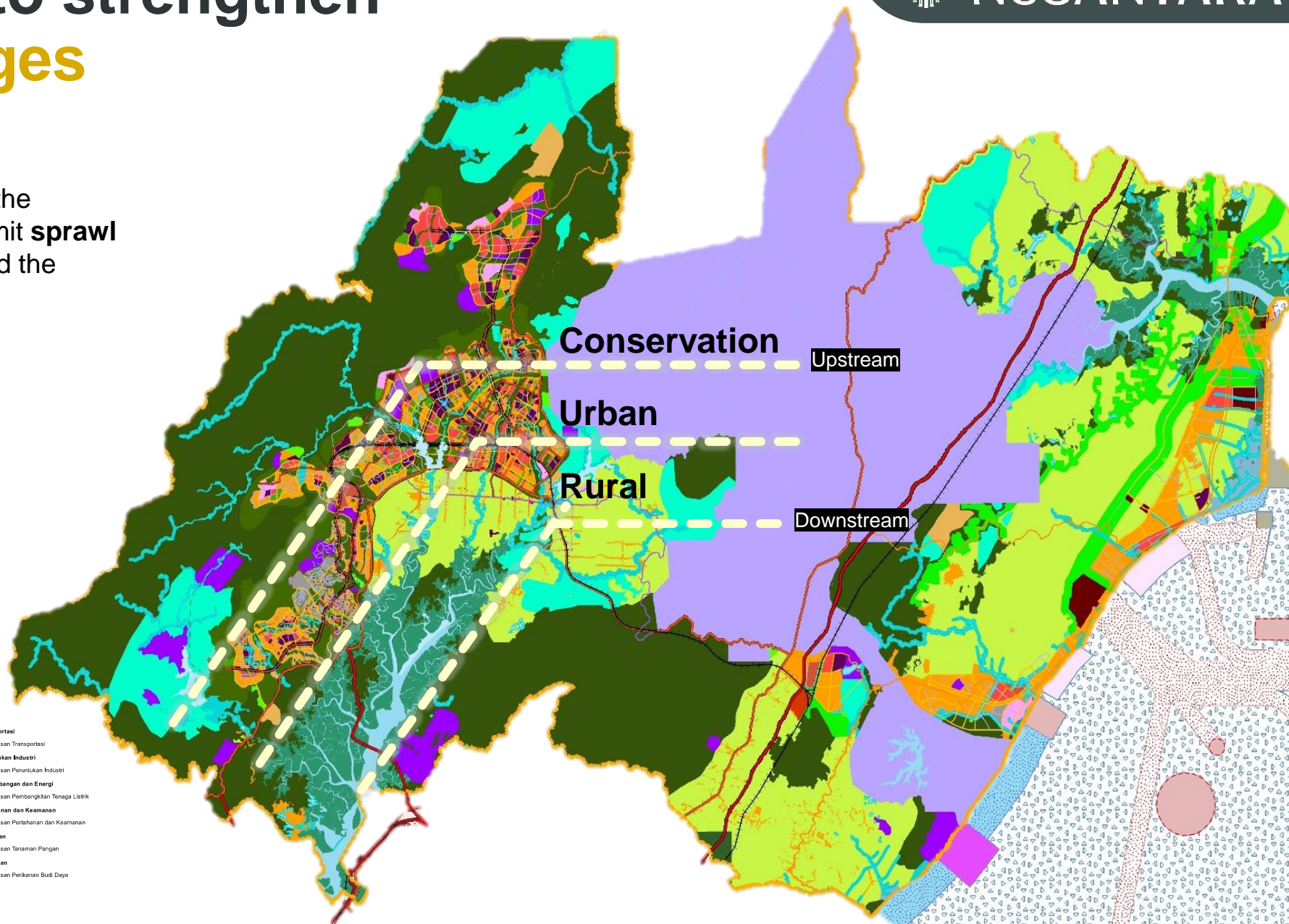


Spatial planning to strengthen urban-rural linkages



Spatial planning to strengthen urban-rural linkages

Green area and main riparian corridor in the upstream **protect the urban cells** and limit **sprawl development** to the surrounding area and the **existing villages** at the downhill.



RENCANA POLA RUANG		
KAWASAN LINDUNG		
Kawasan yang Memberikan Perlindungan terhadap Kawasan Bawahannya		
HL	Kawasan Hutan Lindung	
Kawasan Konservasi		
TAHURA	Taman Hutan Raya	
EM	Kawasan Ekosistem Mangrove	Badan Air
EM	Kawasan Ekosistem	Badan Jalan
Kawasan Perlindungan Setempat		
PS	Kawasan Perlindungan Setempat	
Ruang Terbuka Hijau		
RK-1	Rimba Kota	
RK-2	Taman Kota	
RK-3	Taman Kecamatan	
RL-1	Taman Kelurahan	
RTH-1	Penakaman	
RTH-2	Jalur Hijau	
KAWASAN BUDI DAYA		
Kawasan Campuran		
C	Kawasan Campuran	
Kawasan Perdagangan dan Jasa		
K	Kawasan Perdagangan dan Jasa	
Kawasan Perkantoran		
KT	Kawasan Perkantoran	
Kawasan Pemukiman		
R	Kawasan Perumahan	
PSA	Kawasan Fasilitas Umum dan Fasilitas Sosial	
IP	Kawasan Infrastruktur Perkotaan	
Kawasan Pariwisata		
W	Kawasan Pariwisata	
Kawasan Transportasi		
TR	Kawasan Transportasi	
Kawasan Peruntukan Industri		
IK	Kawasan Peruntukan Industri	
Kawasan Pertambangan dan Energi		
PTL	Kawasan Pembangkitan Tenaga Listrik	
Kawasan Pertahanan dan Keamanan		
IK	Kawasan Pertahanan dan Keamanan	
Kawasan Pertanian		
P-1	Kawasan Tanaman Pangan	
Kawasan Perikanan		
IK-2	Kawasan Perikanan Budi Daya	

Source: National Strategic Area Spatial Plan of the National Capital City (RTR KSN IKN 2022-2024).



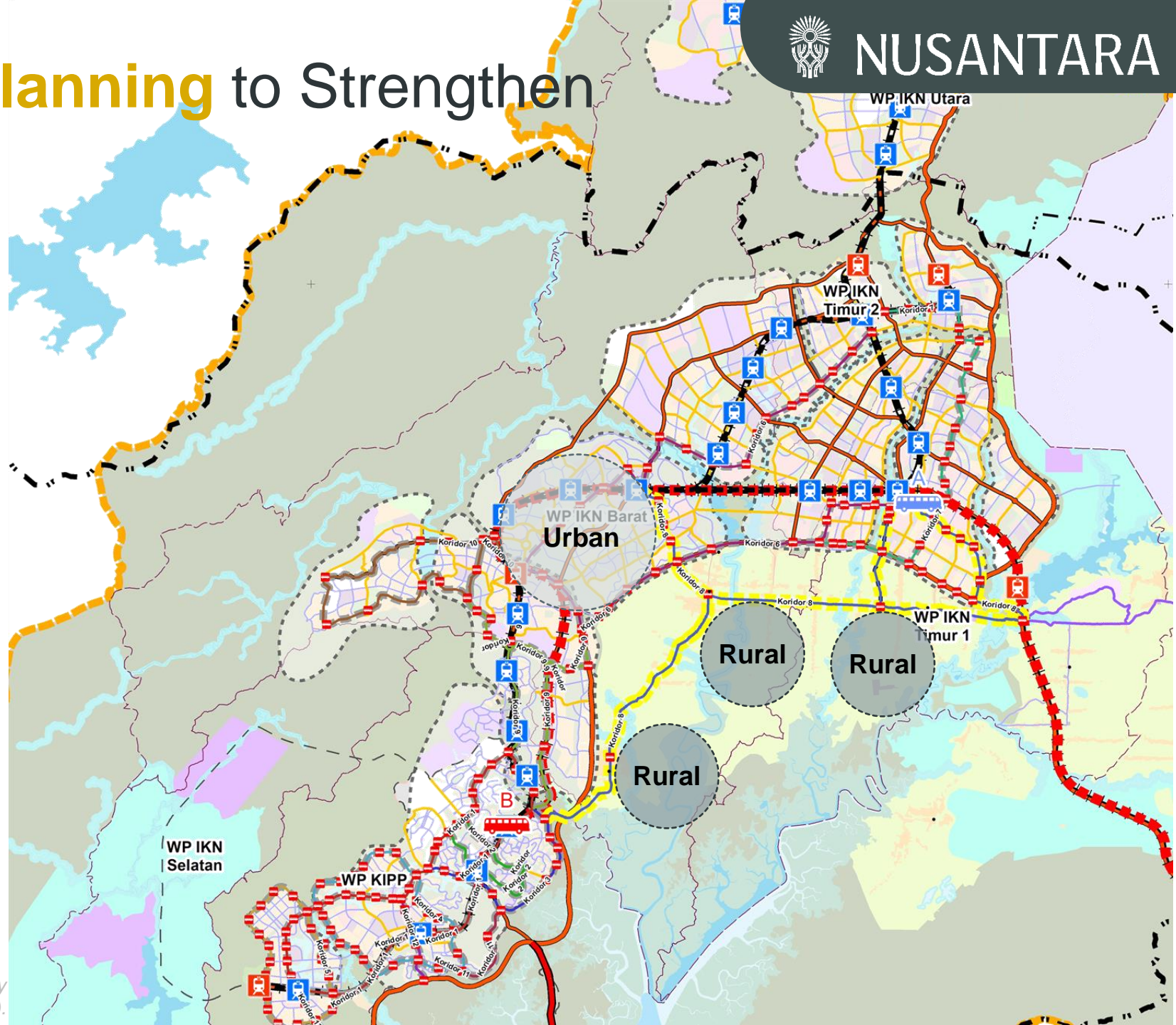
The Roles of Spatial Planning to Strengthen Urban-Rural Linkage

Transportation network plan integrates land, water, and air transportation to achieve **urban-rural connectivity**.

The artery road in the urban-rural boundary serves as a **connection** between both areas, creating social-cultural linkage and symbiotic relationship.

Legend

- VVIP Airport
- Toll Road
- Primary Arterial Road
- Secondary Arterial Road
- Primary Collector Road
- Secondary Collector Road
- Primary Local Road
- Secondary Local Road
- Specific Used Road
- Operational Station
- Station
- Type A Terminal
- Type B Terminal
- Regional Corridor
- Primer Corridor
- Secunder Corridor
- Secunder Corridor/Rural Area
- Corridor 1
- Corridor 2
- Corridor 3
- Corridor 4
- Corridor 5
- Corridor 6
- Corridor 7
- Corridor 8
- Corridor 9
- Corridor 10
- Corridor 11
- Corridor 12
- Corridor 13
- Urban Cell



Source: National Strategic Area Spatial Plan of the National Capital City (RTR KSN IKN 2022-2024).

Nusantara as a “10 minute city”



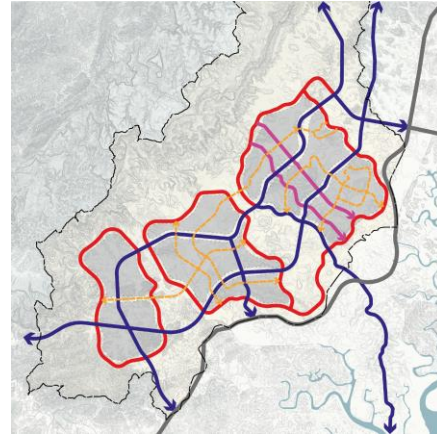
Appreciation for Natural Land Morphology

KIPP’s spatial structure plan responds existing natural topography as well as identifies hill and valley with various slope.



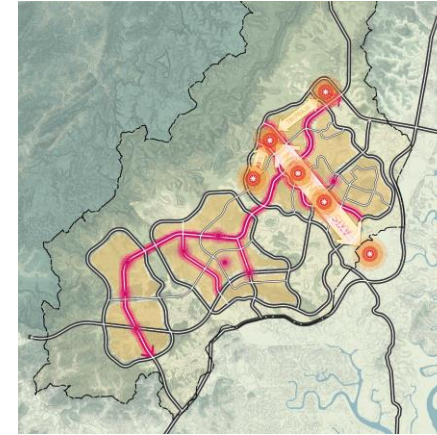
Green Fingers Connectivity

Spatial structure of the city were formed to maximize natural landscape as the green finger, which acts as an ecological and recreational function.



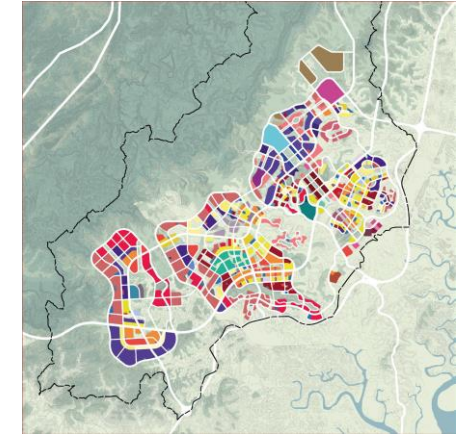
Connectivity System of The Area

The mobility corridor formed in a loop system that facilitate mobility to the entire area as well as a respond to the existing natural condition.



Axis and Visual Corridor

The axis represents the philosophical value and forms the main corridor, which includes Kebangsaan Axis (North-South) and Tripraja Axis (West-East).



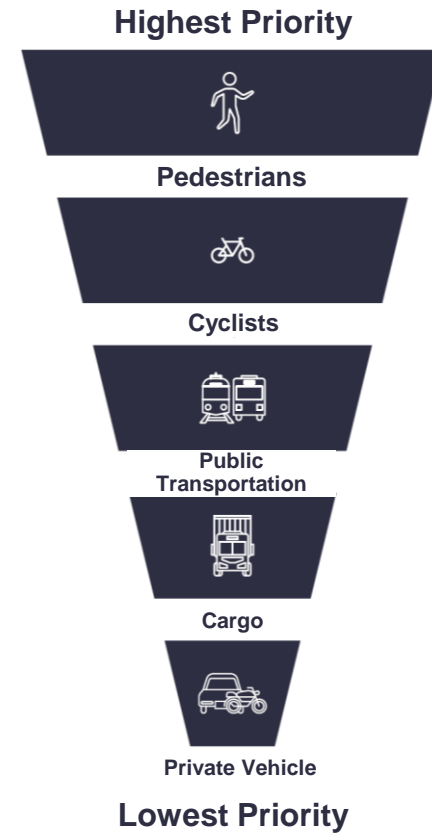
Zoning and City’s Blocks

Land use zoning have certain function that influenced by topography, land carrying capacity, and the main axis.

Nusantara as a “10 minute city”



“**Settlement Transformation**” focused on the development of inclusive, smart, collaborative, compact, based on the **10 minutes city concept**.



<10 minutes

Nusantara’s sustainable mobility concept prioritize **non-motorized and public transportation**.

Residents can access **Public Transportation Nodes and Public Facilities**.



The New Ways of Living



10 minutes to Social Facilities, Public Facilities, and Transit Hub

Each district consists of several interconnected vertical buildings and have collaborative spaces aimed at increasing social interactions

Public Space Permeability



Collaborative Space



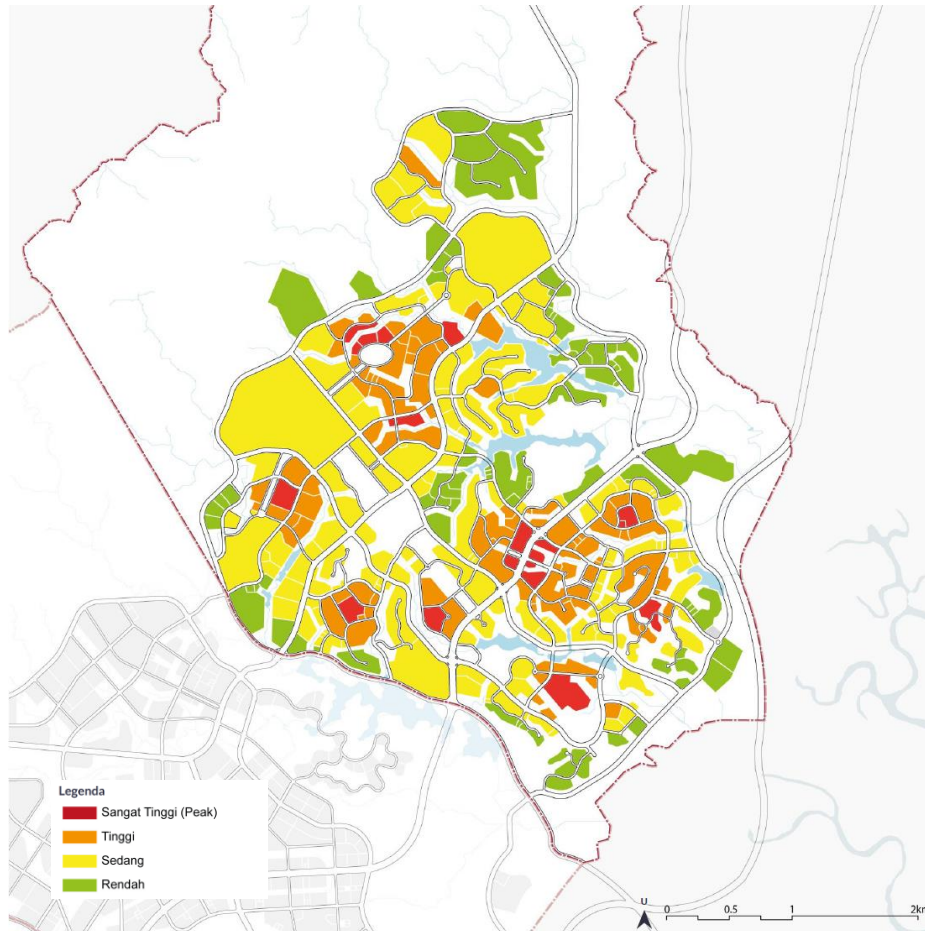
Flexible Social Area



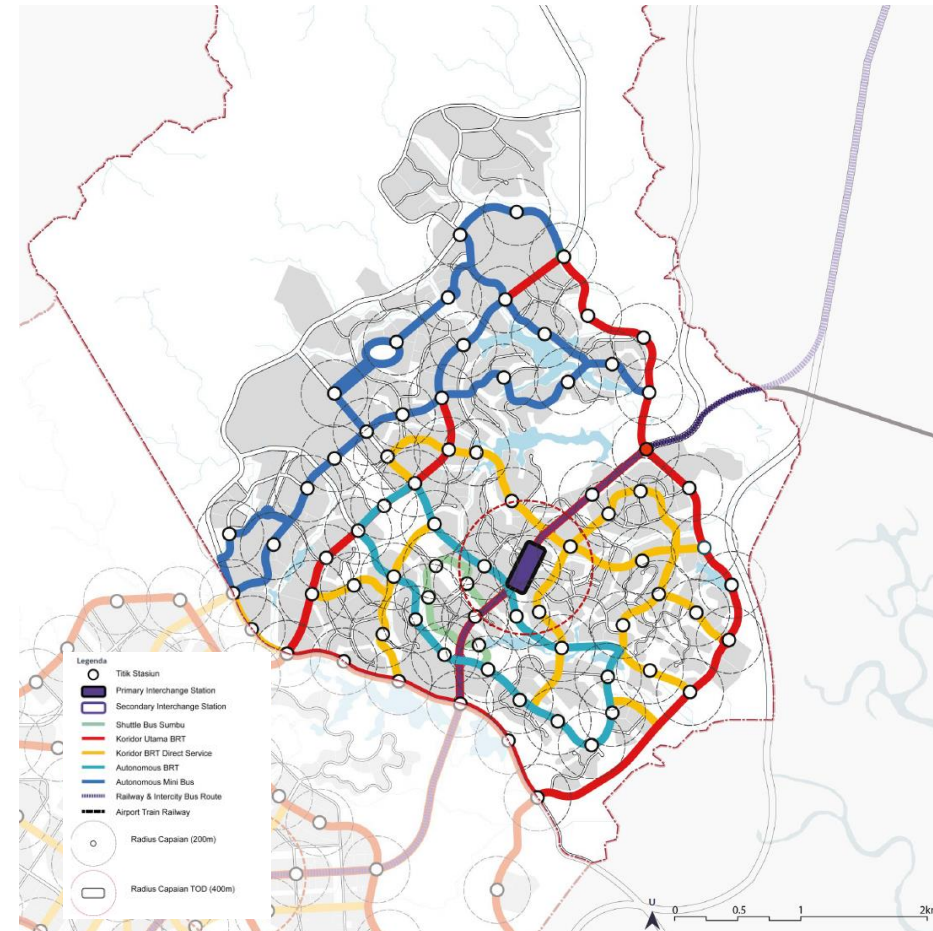
Connected to Internet



High intensity development in Nusantara



Optimizing variety of intensity to accommodate a compact lifestyle and create **engaging and walkable** community, promoting a better quality of life.



Public transportation network and transit node to accommodate **sustainable mobility** and **compact living**.

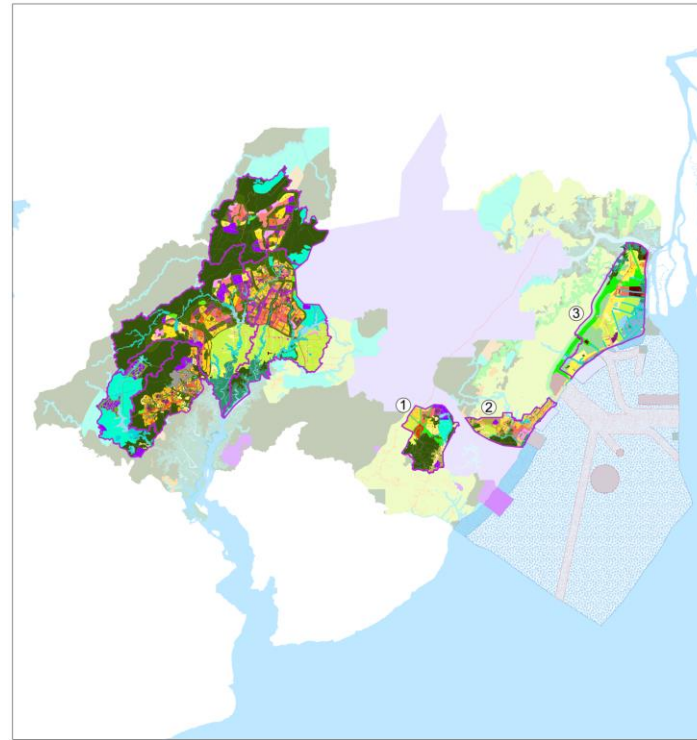
Strategy for Rural Development

Basic Principles of Environmental Protection and Management

- Maintain and simultaneously improve environment carrying capacity
- Utilize the potential of natural resources efficiently
- Avoid environmental risks and damage
- Reducing regional vulnerability to the impacts of climate change and reducing greenhouse gas (GHG) emissions
- Optimizing ecosystem service performance
- Improve and maintain biodiversity resources

Source: Presidential Regulation No.63 of 2022 on the Details of the Nusantara National Capital Master Plan

Planning



WP 7 Simbang Samboja

- Regional Commodity Distribution & Trading Centre
- Housing & Settlement



WP 8 Kuala Samboja

- Agro-industrial & Food Industry Centre
- Housing



WP 9 Muara Jawa

- Agriculture & Fisheries-based Activity Centres
- Public Service Centre
- Housing & Settlement

Source: Detailed Spatial Plan of IKN

Implementation (2023)



Training on the Use of Green House Drip Irrigation System



Reforestation

THANK YOU TERIMA KASIH

Nusantara National Capital Authority – Jakarta Office
Menara Mandiri Tower II, Floor 27

Jl. Jend. Sudirman Kav 54-55, RT.5/RW.3, Senayan,
Kebayoran Baru, Jakarta Selatan 12190, Indonesia

Nusantara National Capital Authority – Balikpapan
Office

Pantai Mentari Compound

Jl. Mulawarman 6, Manggar, Kec. Balikpapan Timur
Kota Balikpapan 76116, Kalimantan Timur

Office +62 21 27099100
Email investasi@ikn.go.id
sekretariat@ikn.go.id

Website ikn.go.id
Youtube IKN Indonesia
Instagram [@ikn_id](https://www.instagram.com/ikn_id)
Twitter [@ikn_id](https://twitter.com/ikn_id)
Facebook IKN Indonesia

