



Government implementation agency  
AGENCY FOR LAND ADMINISTRATION  
AND MANAGEMENT, GEODESY AND  
CARTOGRAPHY



# NATIONAL SPATIAL PLANNING OF MONGOLIA /Coexistence of Urban and Rural Areas in National Spatial Planning

**IKHBAYAR Tsevelmaa**

Head of land management division

The 6<sup>th</sup> Spatial Planning Platform Meeting

08 November 2023



Government implementation agency

AGENCY FOR LAND ADMINISTRATION AND  
MANAGEMENT, GEODESY AND CARTOGRAPHY

# CONTENTS

1. Brief introduction and challenges
2. Legislation of Mongolia on spatial development and planning
3. National general land management plan
4. Draft Human Settlement Concept
5. Government initiatives



# Brief introduction about Mongolia

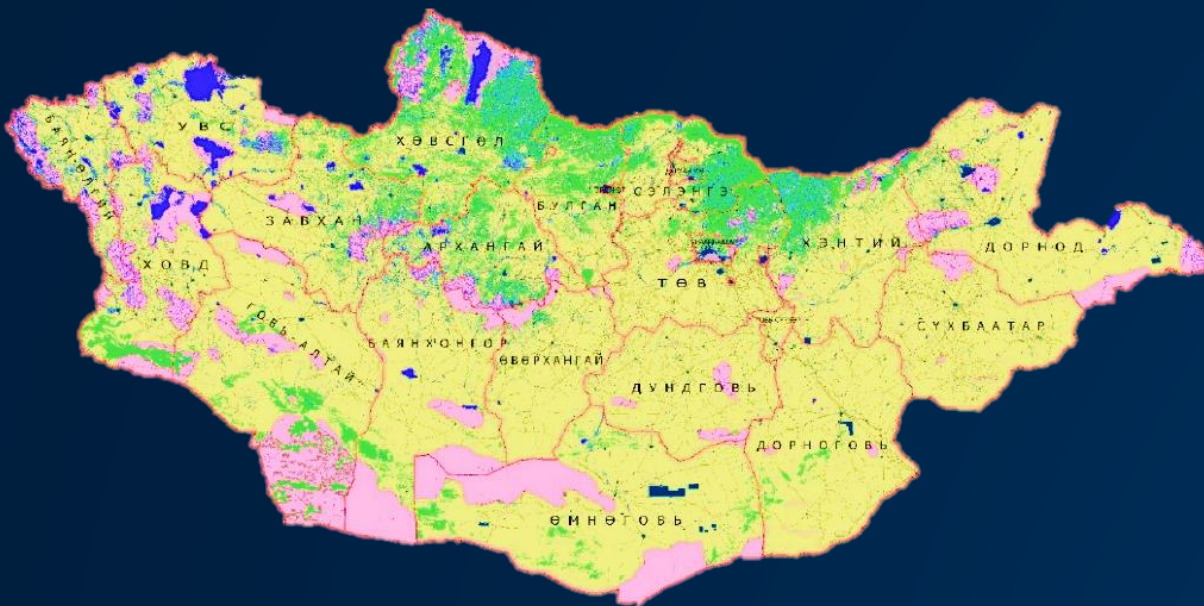


- **Capital:** Ulaanbaatar
- **Total area:** 1,564,411 square, km
- **Terrain:** Vast semi-desert and desert plains, mountains in the west and southwest, Gobi Desert in the southeast
- **Population:** 3.4 million
- **GDP:** Per capita \$5126 /2022/
- **Main economic sector:** Mining 23.5%, Agriculture 12.8%,
- **Livestock:** 71.1 million





## LAND CLASSIFICATION



-  1.Agricultural land
-  2.Urban land
-  3.Infrastructure land
-  4.Forest land
-  5.Water land
-  6.Special protected area



1.Agricultural land

113.56

72.61%



2.Urban land

1.00

0.64%



3.Infrastructure land

0.83

0.53%



4.Forest land

14.26

9.12%



5.Water land

0.66

0.42%



6.Special protected area

26.08

16.68%



# Main challenges

## CAUSES

**LACK OF SECTORAL  
INTEGRATION  
MIGRATION**



**URBANIZATION**



**SOCIAL INJUSTICE**

**LACK OF LEGAL ENFORCEMENT**



**OVERGRAZING**

**CLIMATE CHANGE**



## EFFECT

**LAND DEGRADATION  
POLLUTION**



**INFORMAL SETTLEMENTS**

**DESERTIFICATION**



**CONFLICT BETWEEN  
AGRICULTURE AND LIVESTOCK**

**NATURAL DISASTER**



**CONFLICT BETWEEN  
SECTORS**

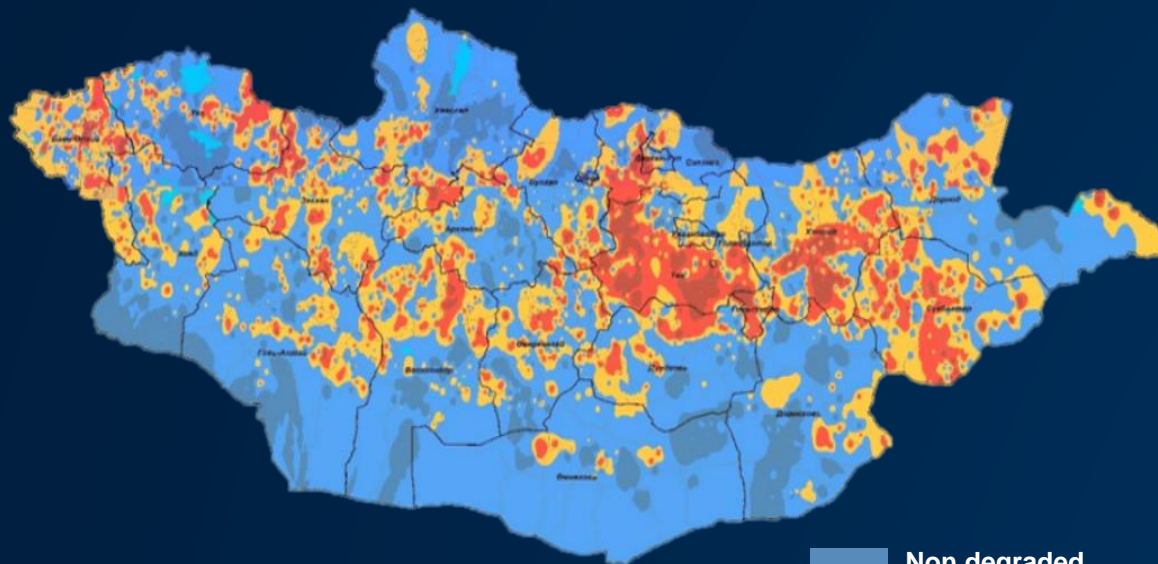






## LAND DEGRADATION AND DESERTIFICATION IN MONGOLIA

### Rangeland degradation in Mongolia



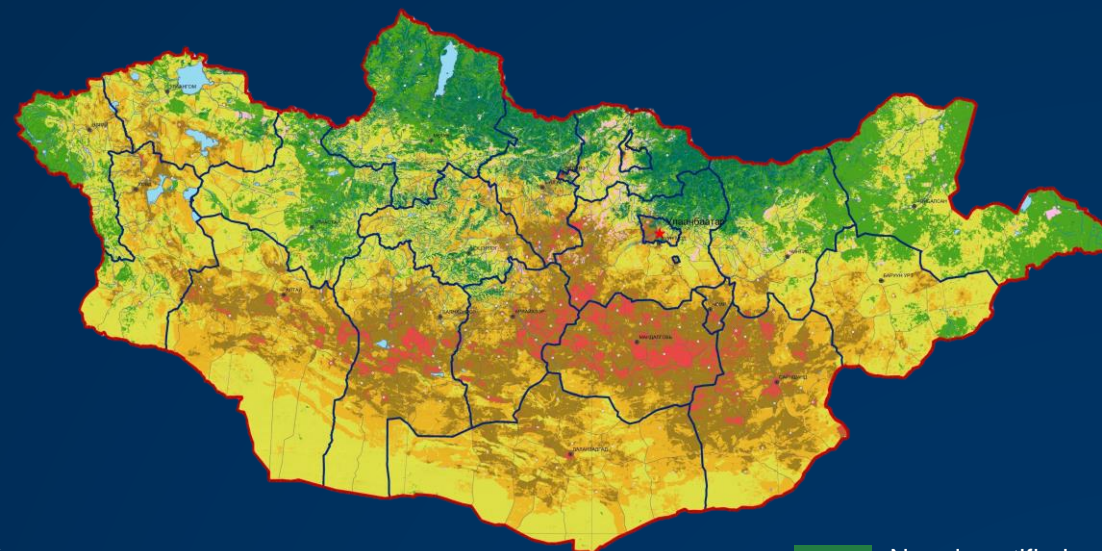
# 88%

*Of Rangeland degraded*

Non degraded	12.4%
Slightly degraded	52.3%
Moderately degraded	15.8%
Heavily degraded	14.4%
Fully degraded	5.1%

Source: ALAMGAC, 2022

### Desertification in Mongolia



# 76.9%

*of the country's total territory has been affected by desertification*

Non desertified
Slight
Moderate
Severe
Very severe

Source: Ministry of nature and environment, tourism 2020



# Main challenges

## RAPID URBANISATION AND REGIONAL DISPARITY



One of the Least densely populated country

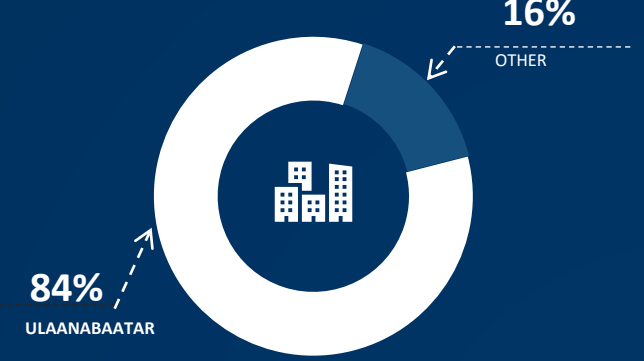
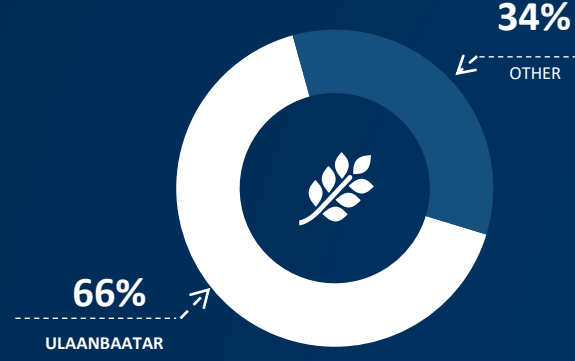
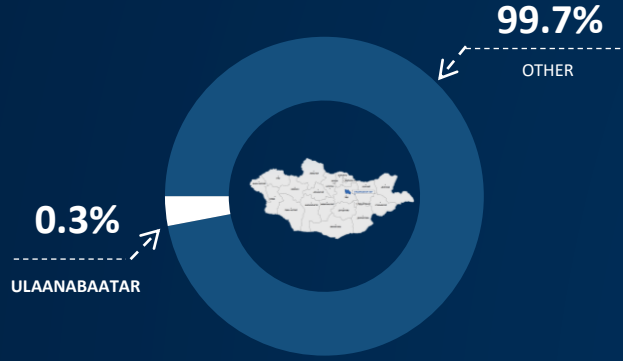
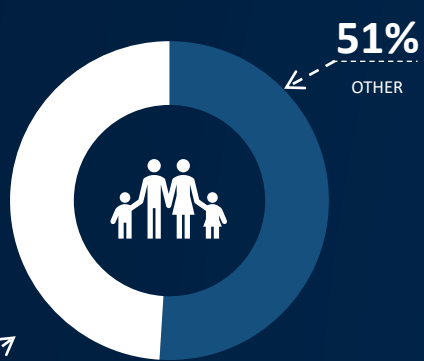
2.2 people per square kilometer area

50 % of Mongolia's population concentrated in Ulaanbaatar

The Ulaanbaatar occupies 0.3% of the total territory of Mongolia

Economic activities are highly concentrated in UB

84 percent of all trade and services are concentrated in Ulaanbaatar



66% of Mongolia's GDP is produced in Ulaanbaatar.



# LEGISLATION OF MONGOLIA ON SPATIAL DEVELOPMENT AND PLANNING DOCUMENTS

## LAW ON DEVELOPMENT POLICY, PLANNING AND ITS MANAGEMENT

## LAW ON LAND

## URBAN DEVELOPMENT LAW

### *National level (strategic guidelines, policy)*

National Regional Development Concept

*Under development - drafting*

National General land management plan

*Approved by Government in 2018*

General concept of human settlement

*Under development - drafting*

### *Regional and Province level (strategic and basic land use plans)*

General land management plan of Capital  
city and Province

*(Basic land use plan)*

Urban development general plan of  
Capital city and city

*(Zoning plans, development restricted or  
supported land uses)*

### *District and Soum level*

Territorial development plan

*(strategic guidelines, policy)*

Annual land management plan of capital  
city, soum and district

*(Land plots of land allocation)*

Urban Development General Plan of  
village and settlements

*(Zoning plans, development restricted or  
supported land uses)*

Partial Plan of village and  
settlements

*(planning of the district, neighborhood, and  
provision of engineering networks)*





## NATIONAL GENERAL LAND MANAGEMENT PLAN

*National level land use planning document*

*The National Land Management Plan is based on the 16-20-year perspective of the country's social and economic development with a land management policy suitable for nature, geographical conditions, land resources, ecology, economy, spatial capacity, and potential.*

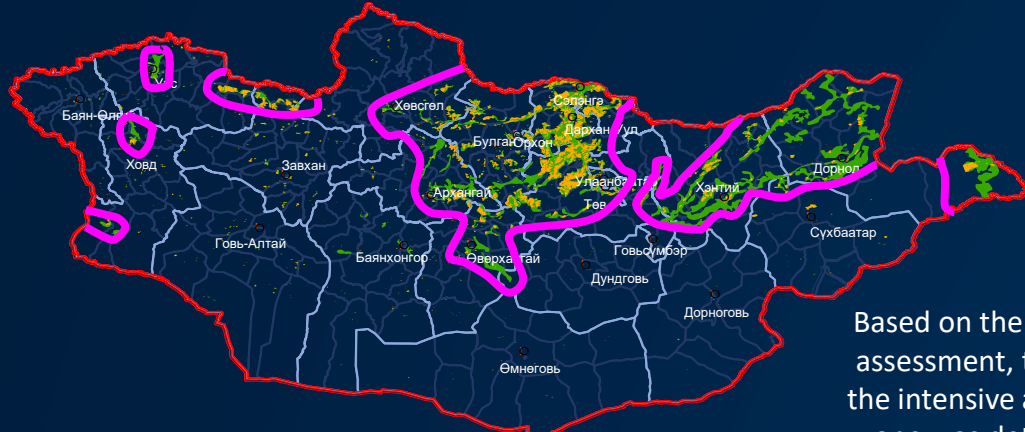
*Law on Land*





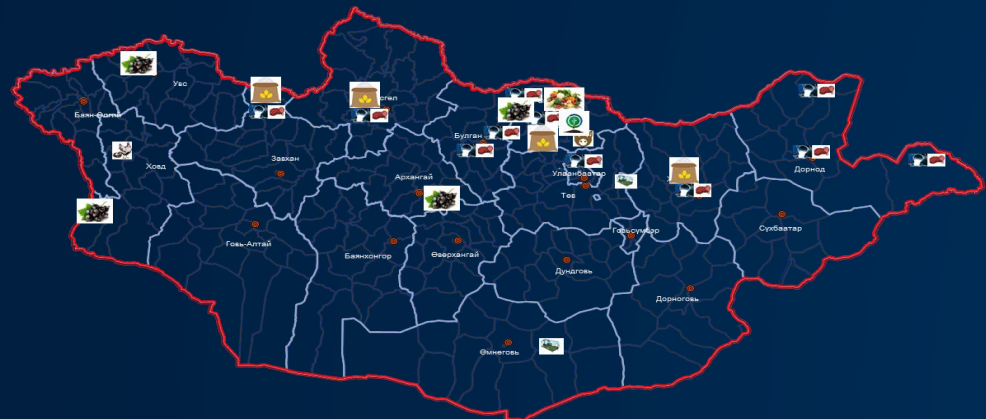
## DEVELOPING INTENSIVE AGRICULTURE ZONE

Zone of intensive agriculture  
9.4 million.ha

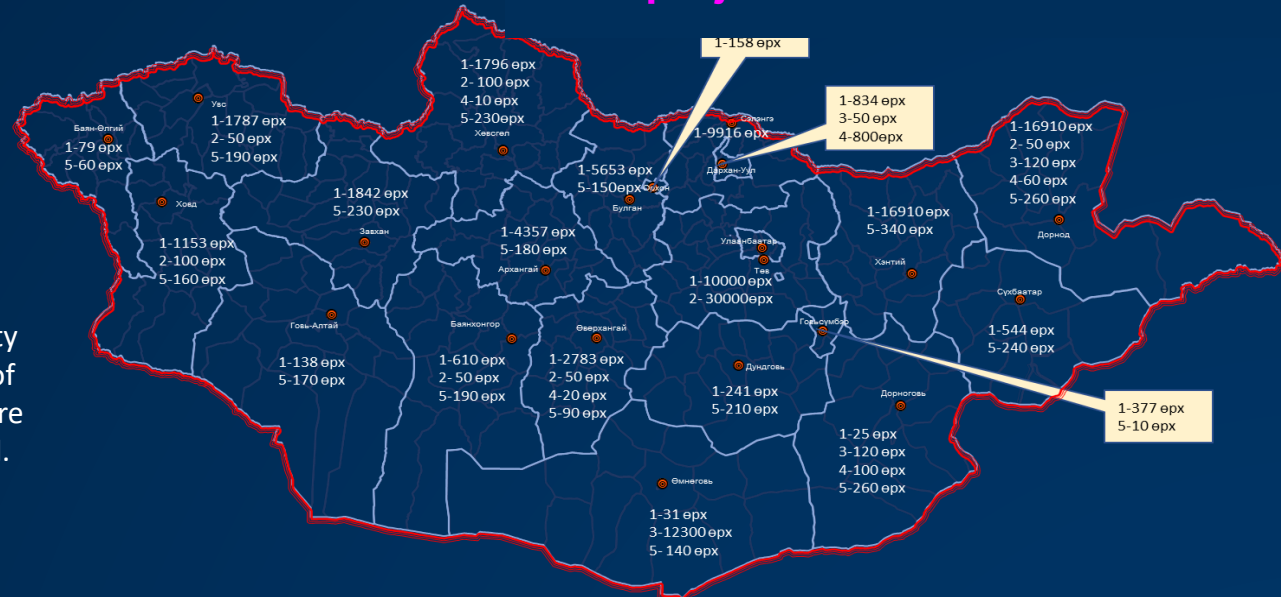


Based on the suitability assessment, the size of the intensive agriculture zone was determined.

It is planned to establish agricultural agro parks in 35 locations



Human settlement development trends and projections







# GENERAL CONCEPT OF HUMAN SETTLEMENT

## NATIONAL GENERAL LAND MANAGEMENT PLAN

### Agricultural zone

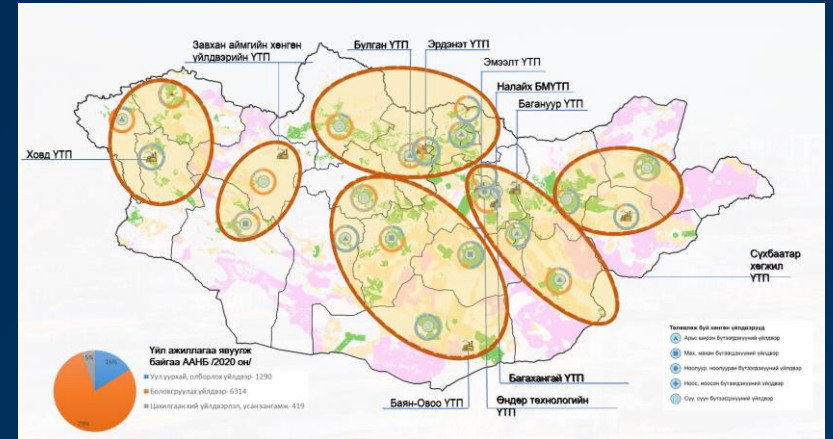


### Transport network



## DRAFT GENERAL CONCEPT OF HUMAN SETTLEMENT

### Agricultural zone



### Transport network





## Challenges implementing NGLMP

- Lack of legislation and law enforcement
- The legal framework is inconsistent
- Lack of coordination between sectors, sectoral integration
- Conflict between sectors



## GOVERNMENT INITIATIVES FOR SPATIAL DEVELOPMENT

1. The Parliament of Mongolia approved the New Revival Policy with actions Urban and Rural Revival
2. Drafting on Law on Land
3. Submitted draft law of Urban Development
4. Developing Settlement Concept
5. Developing Regional Development Concept
6. Developing new cities New Zuunmod city, Kharkhorum







Government implementation agency

AGENCY FOR LAND ADMINISTRATION AND  
MANAGEMENT, GEODESY AND CARTOGRAPHY

**Thank you**  
**Terima kasih**

[ikhbayar.ts@mail.gov.mn](mailto:ikhbayar.ts@mail.gov.mn)