

Regarding the Kyushu Greater Regional Plans

December 18, 2025



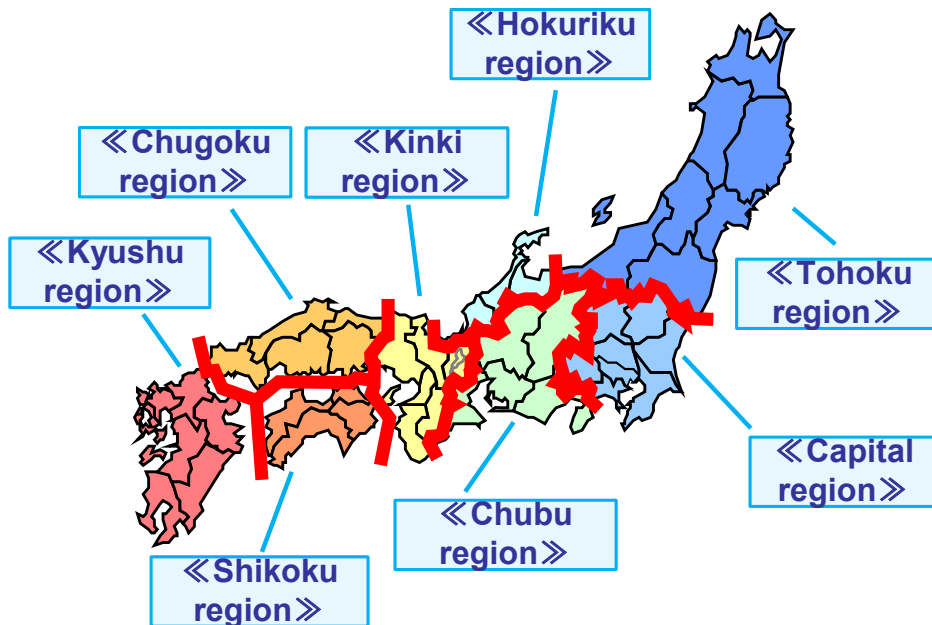
Kyushu Greater Regional Plans Promotion Office

Ministry of Land, Infrastructure, Transport and Tourism

Regarding Greater Regional Plans

- The Greater Regional Plans are established based on Article 9 of the National Spatial Planning Act (Act No. 205 of 1950), with the National Plan (National Spatial Strategy) as the basis, to set policies and goals for each Greater Regional Plan Region (Decision by the Minister of Land, Infrastructure, Transport and Tourism).
- There are 8 Greater Regional Plan Regions: Tohoku, Capital, Hokuriku, Chubu, Kinki, Chugoku, Shikoku, and Kyushu.
(*Note) Hokkaido and Okinawa have the Comprehensive Development Plan of Hokkaido and the Okinawa Basic Policy for Promotion, and Okinawa Promotion Plan, respectively, based on separate enabling laws.

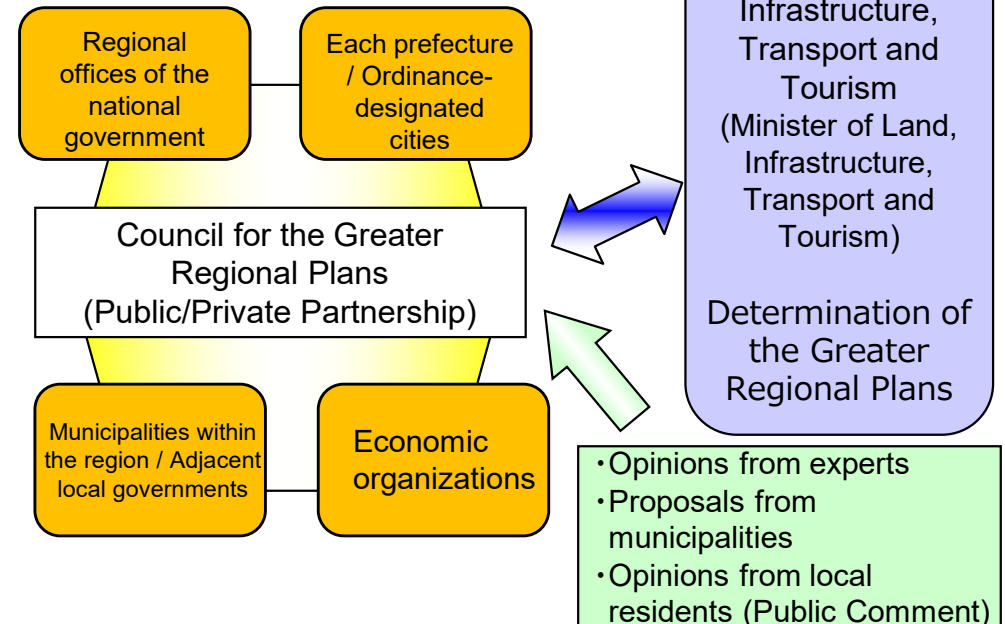
Areas of the Greater Regional Plans



***Note: This is promoted in cooperation with the Comprehensive Development Plan of Hokkaido and the Okinawa Promotion Plan.**

Greater Regional Plan Council

- The Council for the Greater Regional Plans is organized by regional offices of the national government, local governments, and economic organizations, etc.
- The constituent entities cooperate on an equal footing toward the formulation of the plan.



Organization of the Kyushu Greater Regional Plan Council

- The Kyushu Greater Regional Plan Council was established in July 2008 based on Article 10 of the National Spatial Planning Act.
- The Council discusses and decides necessary matters concerning the formulation and implementation of the Kyushu Greater Regional Plan.
- The Council establishes the Steering Committee and the Working Committee, and also establishes the Expert Committee composed of academic experts, etc., in order to receive specialized opinions and advice.

【Kyushu Greater Regional Plan Council】

- Chairperson: IKEBE Kazuhiro
(Chairman, Kyushu Economic Federation)
- Organization: Composed of the heads of 30 constituent organizations
 - National government organization of local administrative
 - Local governments
(Prefectures and Ordinance-designated cities)
 - Various related organizations*
 - *Kyushu Mayors' Association
 - Kyushu District Town and Village Chairmen's Association
 - Kyushu Economic Federation
 - Kyushu Chamber of Commerce and Industry Federation

【Steering Committee】

- Assists the Council
- Composed of director-level officials from the Council's constituent organizations

【Working Committee】

- Manages the Steering Committee and handles practical discussions
- Composed of working-level personnel from the Council's constituent organizations.

【Expert Committee】

- Established based on Article 10, Paragraph 5 of the National Spatial Planning Act.
 - Members: Composed of 12 academic experts
 - Chairperson: YOSHITAKE Tetsunobu
(Professor, Kyushu Institute of Technology Graduate School)
- *Expert Fields : Regional Planning, Urban Planning, Medical and Welfare, Social Security, Tourism, Disaster Prevention, Regional Economy and Industry, Urban Development, Mountainous/Hilly Areas, Aging Society, Logistics, Digital, Agricultural Economics, etc



Kyushu Greater Regional Plans "Expert Committee"

Current Status and Challenges in the Kyushu Region

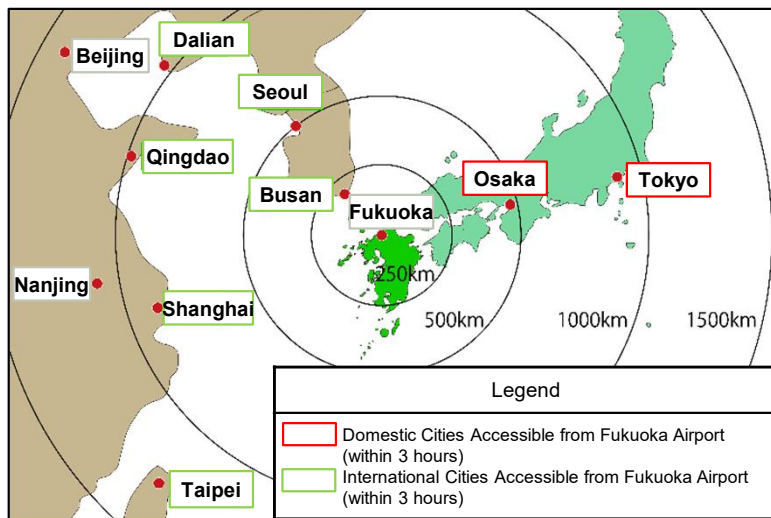
【Position】

- Kyushu is the region closest to the Asian continent and is adjacent to major Asian cities.
- Trade and inbound tourism are expanding as a gateway to Asia.
- The number of foreign workers is increasing.

【Population Trends】

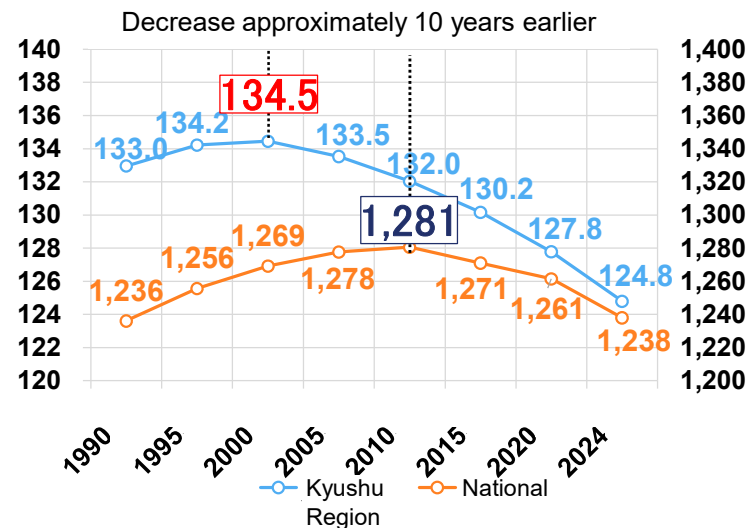
- Population decline, low birthrate, and aging are advancing, leading to a shortage of workers and successors
- Young generations aged 24 and under, corresponding to high school and university students, are moving to other regions (out-migration excess).
- The total fertility rate is higher than the national average.

<Distance between Fukuoka and major domestic and Asian cities>



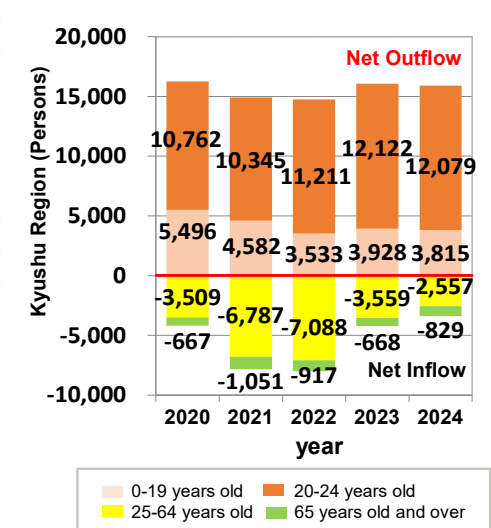
Source: Created based on maps from the Geospatial Information Authority of Japan

<Population Transition>



Source: Census (1990–2020) and Population Estimates (as of October 1, 2024)

<Net Migration by Age Group>



Source: Report on Internal Migration in Japan derived from the Basic Resident Register

Current Status and Challenges in the Kyushu Region

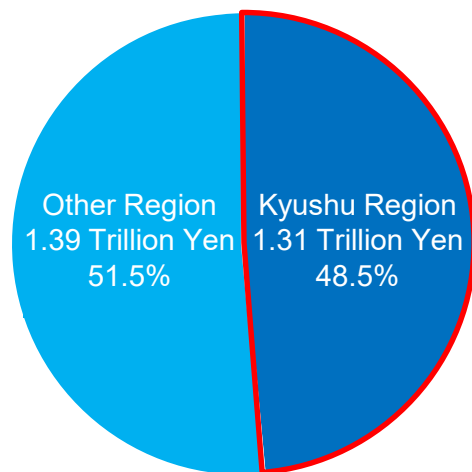
【Industry】

- Key industries such as the semiconductor industry, automotive industry, and agriculture, forestry, and fisheries are performing strongly.
- The share of agricultural output is high, forming a food production base for Japan.
- Recently, the national share of IC (integrated circuit) production value has grown significantly, forming a global industrial ecosystem.

【Disaster and Environmental Preservation】

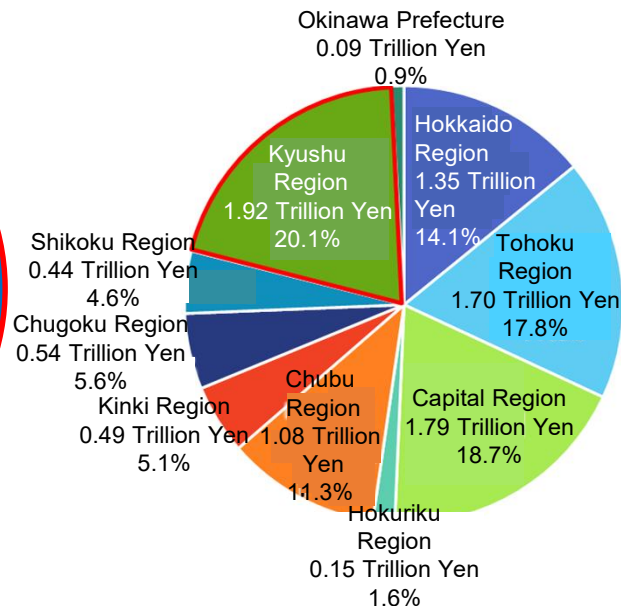
- It is necessary to respond to disasters such as floods, landslides, volcanic disasters, and the Nankai Trough Megathrust Earthquake, and to secure redundancy in the transportation infrastructure.
- Kyushu possesses rich natural environments, including World Natural Heritage sites and hot springs.

<IC Production Value and National Share of Kyushu> (2024)



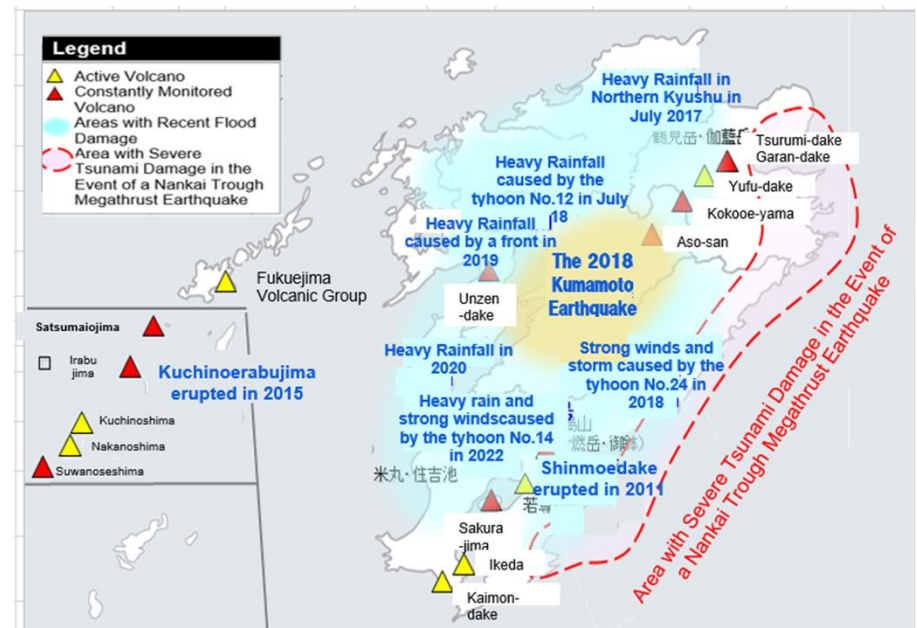
Source: Trends in Mining and Manufacturing Industries in the Kyushu Region

<Agricultural Output Value of Kyushu> (2023)



Source: Agricultural Production Income

<Recent Disasters in the Kyushu Region and Areas Susceptible to Severe Tsunami Damage during a Nankai Trough Megathrust Earthquake>



Asia's Growth Center: 'Island Kyushu'

~Kyushu that unites and develops while showcasing its individuality and charm, a region we can be proud of~

Goal 1: Growth Engine "Island Kyushu" ~Transforming Exchange and Change into Competitiveness~

By enhancing gateway functions and establishing vibrant international exchange hubs where diverse people gather, we will boost international competitiveness and foster the creation of new industries through innovation. This will stimulate economic growth and improve living standards within the region and play a vital role in extending these benefits to other regions within Japan.

Goal 2: Self-Sustaining Regional Collaboration "Island Kyushu" ~ Toward Comfortable and Happy Living ~

To ensure growth reaches remote islands, peninsulas, and mountainous areas, and to build attractive living environments with high levels of happiness, we aim to create Regional Living Areas where digital and physical worlds converge, allowing the convenience of cities and the comfort of rural areas to coexist.

Goal 3: Strong and Beautiful "Island Kyushu" ~ Toward a Sustainable and Resilient Society ~

We will build a resilient Kyushu region capable of withstanding large-scale natural disasters such as earthquakes, torrential rains, and volcanic activity, and a strong and beautiful region that preserves its natural beauty, minimizes environmental impact, and leads the realization of carbon neutrality.

Wide-Area Collaboration Project [PJ1]

1. A Project for Exchange Hub, Collaboration, and Growth Between Asia, the World, and Japan

- Leveraging its proximity to Asian regions to enhance international collaboration, exchange, and competitiveness. Driving the economy as a growth center in Asia.
- Promoting seamless land-sea-air network development to enhance gateway functions.



- ▲ Strengthen international shipping cargo exports through the development of an international logistics terminal
【Hakata Port Island City Container Terminal】

(Project Examples)

Strengthening the functions of international hub ports and important ports, building resilient logistics networks, expediting special vehicle passage permits, etc.

Wide-Area Collaboration Project [PJ2]

2. A Project for Exchange and Collaboration that Unites and Creates Vitality

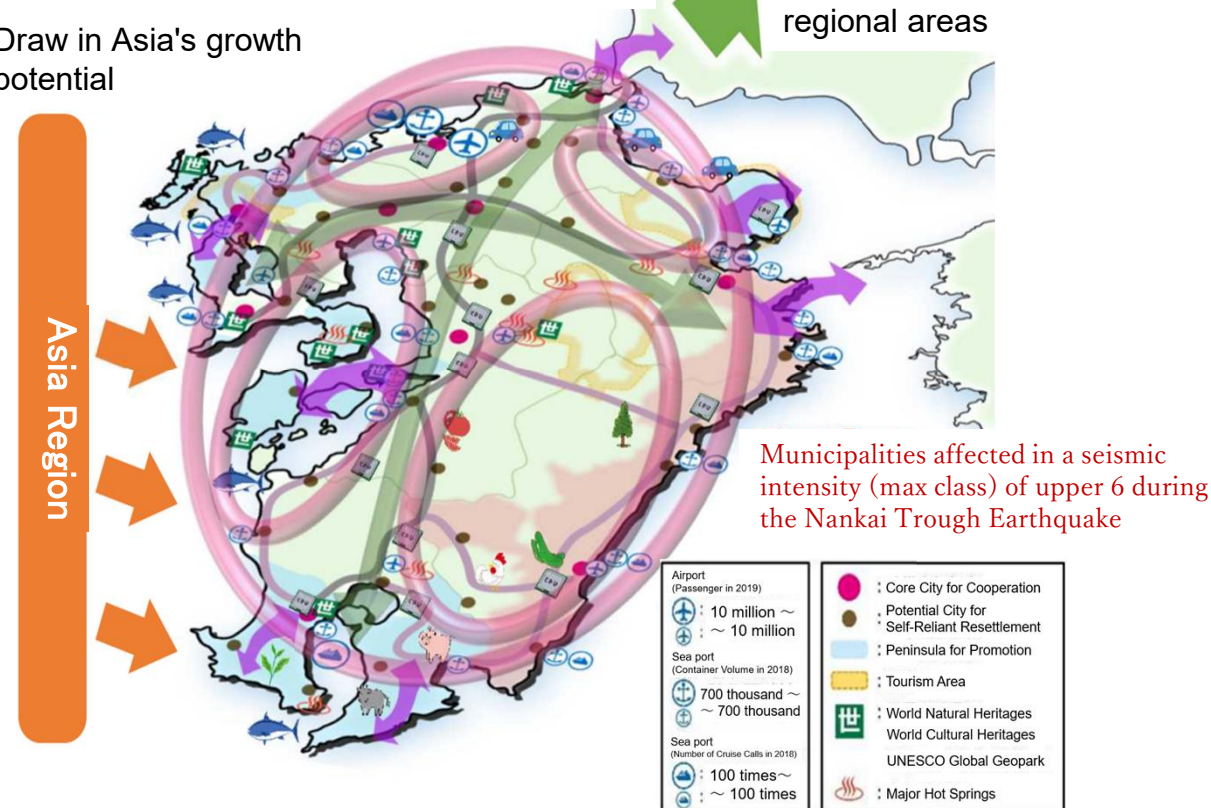
- Seamlessly connecting central core cities with Urban/Regional Areas and settlement living areas by land, sea, and air transportation networks to generate vitality across the entire Kyushu region.

"Cross" Network connecting the north-south and east-west axes of Kyushu

"Ring" Network that newly collaborates/links, centered on the "Cross."

Strengthening exchange and cooperation with domestic regional areas

Draw in Asia's growth potential



(Project Examples)

▲ Initiatives for network quality enhancement

Enhancing convenience through expanding and strengthening expressway network and installing smart interchanges, promoting traffic smoothing in core cities, and improvement of traffic congestion utilizing big data, etc.

3. Sustainable Industrial Promotion Project Leveraging Strengths and Distinctive Features

- Promote foundational development for each industry to respond to changes in socio-economic conditions, including DX and GX advancement. Extend this to industries like automotive and semiconductors to establish and strengthen economic security and production bases.
- In agriculture, forestry, livestock, and fisheries, strengthen food security, expand exports, promote sixth-sector industrialization, and realize profitable industries to drive development.
- In the tourism industry, promote the development of "Tourism Island Kyushu" through integrated efforts across the Kyushu region.
- Additionally, promote the development of new industries in sectors that leverage regional characteristics.

(Project Examples)

Human resource development and supply chain strengthening toward the realization of a "New Silicon Island Kyushu," promotion of high value-addition to tourism resources and encouragement of wide-area touring and long-term stays utilizing Kyushu MaaS, public-private partnership for the development and export expansion of agriculture, forestry, livestock, and fisheries industries, and promotion of strengthening hub functions at "Michi-no-Eki" (roadside stations) and other facilities.



▲ Example of Initiatives Toward Realizing "New Silicon Island Kyushu" 【Kumamoto Semiconductor Industry Promotion Vision】



▲ Sustainable Regional Transportation through Public-Private Co-creation 【Kyushu MaaS】

Wide-Area Collaboration Project [PJ4]

4. Promoting attractive city development centered on core cities Project

- Strengthen the wide-area collaboration hub functions of core cities, revitalize multi-generational exchange centers from the wide-area urban level down to local communities, and achieve this through the regeneration of urban communities.
- Strengthen the information network within the wide-area sphere, enable each prefecture to be self-reliant while working together as one to revitalize the region, and establish a self-sustaining economic circulation system.



▲ Initiatives to Strengthen Urban Functions
[Tenjin Big Bang]



▲ Initiatives to Create Vibrant Spaces
[Takachiho Street Road Space Reorganization]

(Project Examples)

Central urban area revitalization and regional city regeneration through the Tenjin Big Bang initiative, promotion of utility pole removal (undergrounding of power lines) and bicycle environment development, creation of vibrant public spaces utilizing the "Hokomichi system" (a system for utilizing roads as pedestrian spaces), etc.

5. Forming Regional Living Areas Connecting Remote Islands, Peninsulas, Mountainous and Rural Areas, and Cities Project

- Through digital utilization and public-private partnerships, promote the formation of regional living areas that integrate the richness of local areas with the convenience of cities, merging digital and reality.
- Regional revitalization through expanding and deepening connections with the residents, and developing and securing human resources.
- Based on the actual situation in each region, expand various activities in a multilayered manner to steadily formation of regional living areas.



▲Activities for Formation of Regional Living Areas
[Drone delivery and remote medical care in Goto City, Nagasaki Prefecture]

(Examples of Projects)

Establishing road networks between remote islands, peninsulas, and urban areas, ensuring the maintenance of local public transportation through the fusion of transportation networks and digital technology, drone delivery and formation of regional living areas through the promotion of telemedicine etc.

Wide-Area Collaboration Project [PJ6]

6. Projects for disaster prevention and the preservation and creation of a rich environment utilizing experience

- Promotion of both hardware and software measures to enhance the quality and resilience of national land infrastructure. Promotion of appropriate utilization and management of national land through digital technology.
- Promoting ecosystem conservation and carbon neutral, Implementing green infrastructure, Promoting the creation of green national land coexists with the natural environment.



▲Activities for National Resilience

(Examples of Projects)

[Image of River Basin Disaster Resilience and Sustainability by All]

“River Basin-wide Integrated Water Management”, “River Basin Disaster Resilience and Sustainability by All”, promoting “the formation of ecosystem networks” through activities such as “Nature-oriented River Works”, eliminating unimproved sections of arterial high-standard highway, enhancing infrastructure seismic resistance and accelerating measures to address aging infrastructure, etc.

7. Domestic Regional Collaboration Project

- Strengthening exchanges and collaboration with other regions within Japan to achieve "balanced national development".
- Forming a "nationwide corridor network" through the enhancement of high-quality transportation and digital networks, and promoting collaboration with other domestic regions.



新たなJAPANを開拓せよ。

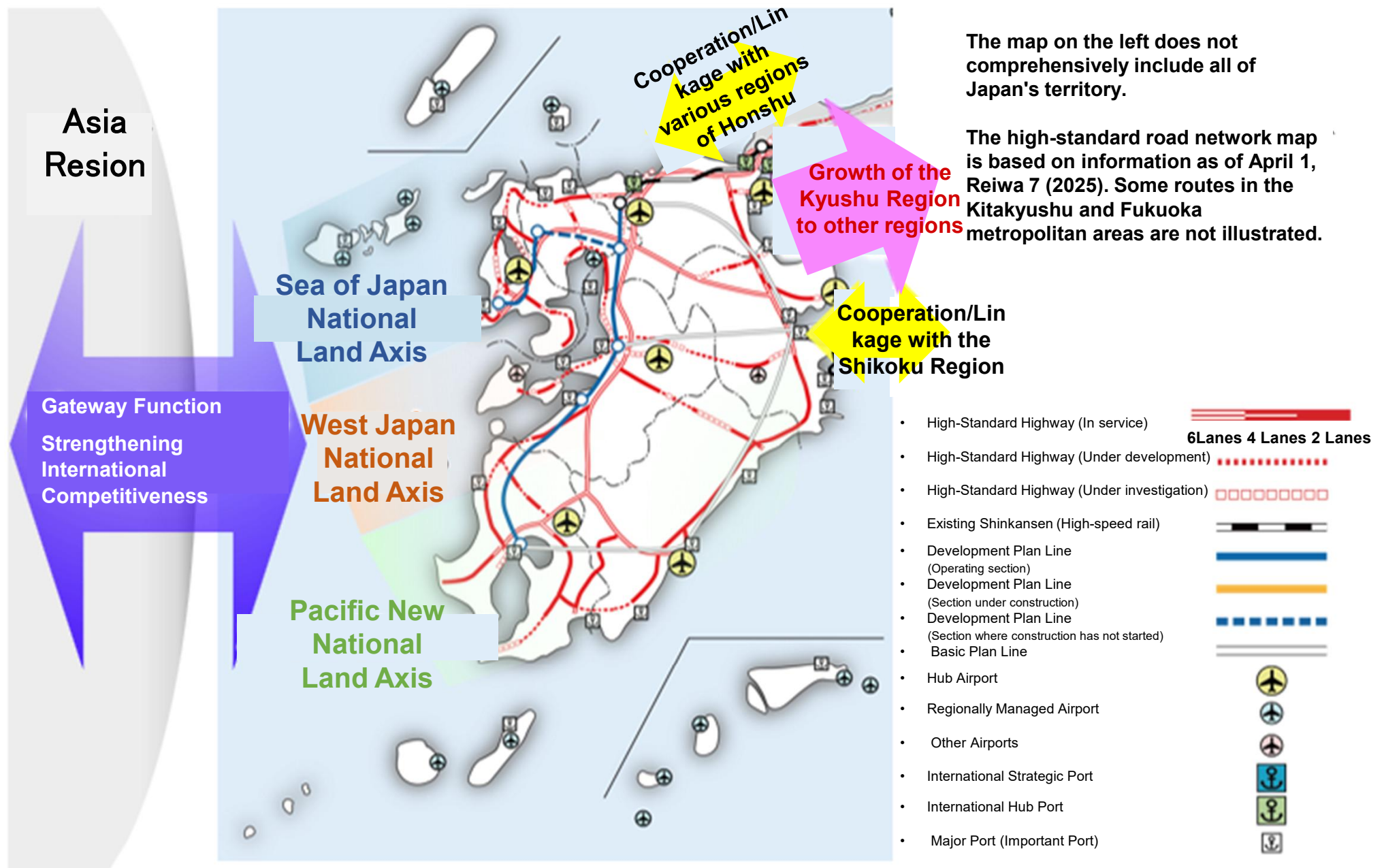


- ▲ Initiatives to attract inbound and domestic tourists and extend their longer stays 【Western Golden Route】

(Project Examples)

Revitalizing tourism-related industries by attracting inbound and domestic tourists and encouraging longer stays

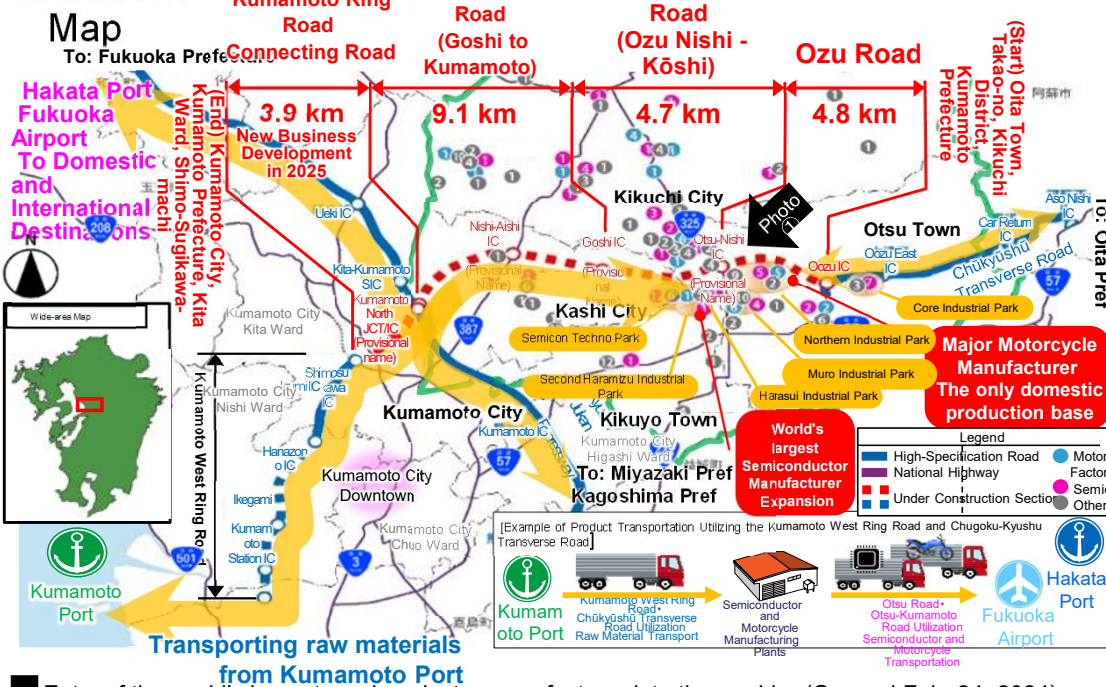
Vision of the Kyushu Region in 2050



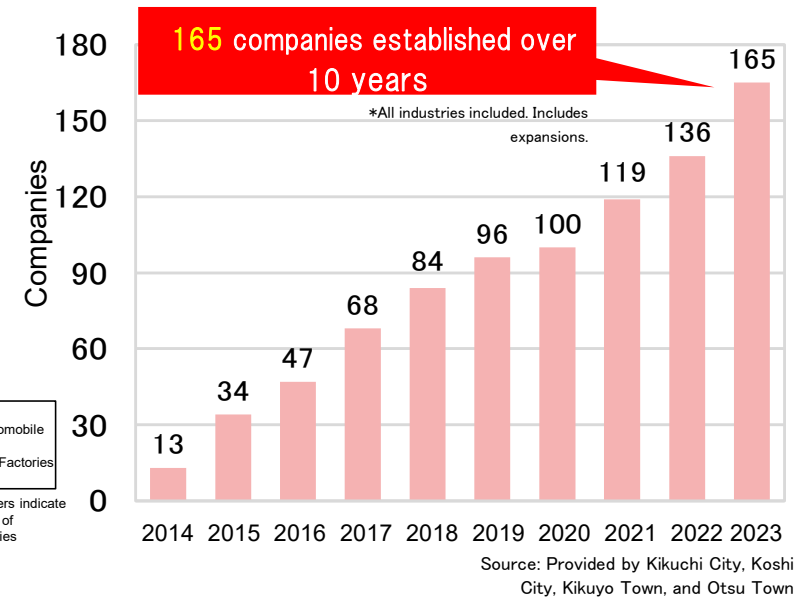
Development of a road network contributing to productivity improvement and regional revitalization

OTaking into account the ongoing development of export industry hubs for semiconductors and other sectors across the country, we will contribute to improving the productivity of industries supporting regional economies by developing access roads to major transportation hubs such as airports and ports. This will steadily advance regional revitalization and, ultimately, the growth of the Japanese economy.

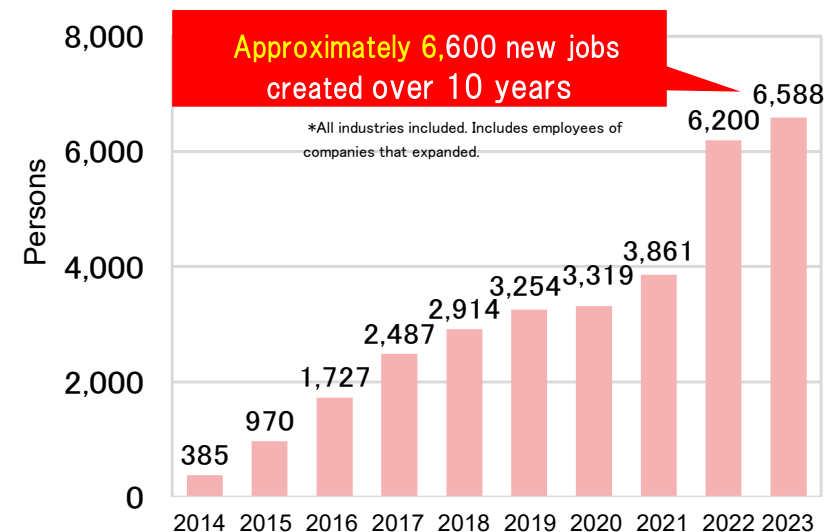
Location



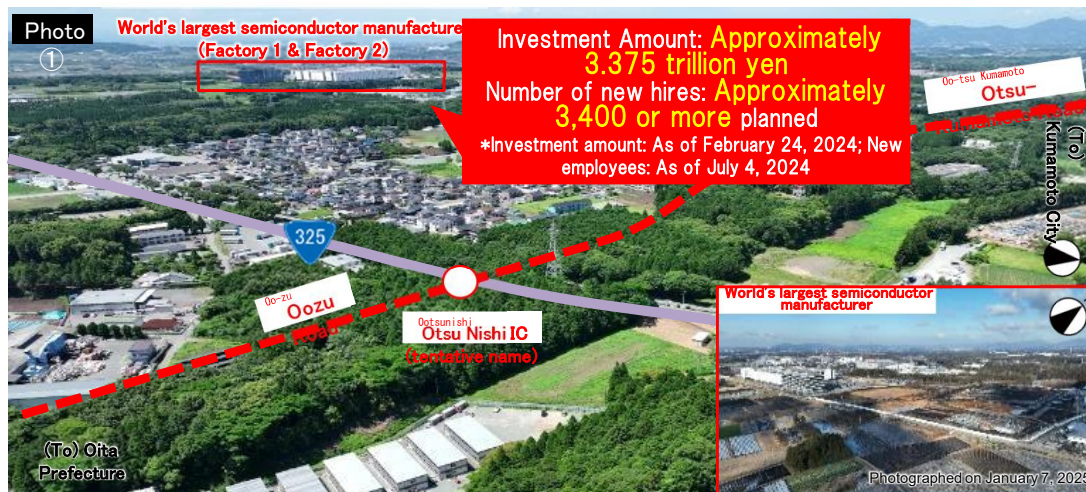
Number of Newly Established Companies (Cumulative)



New Employees (Cumulative)

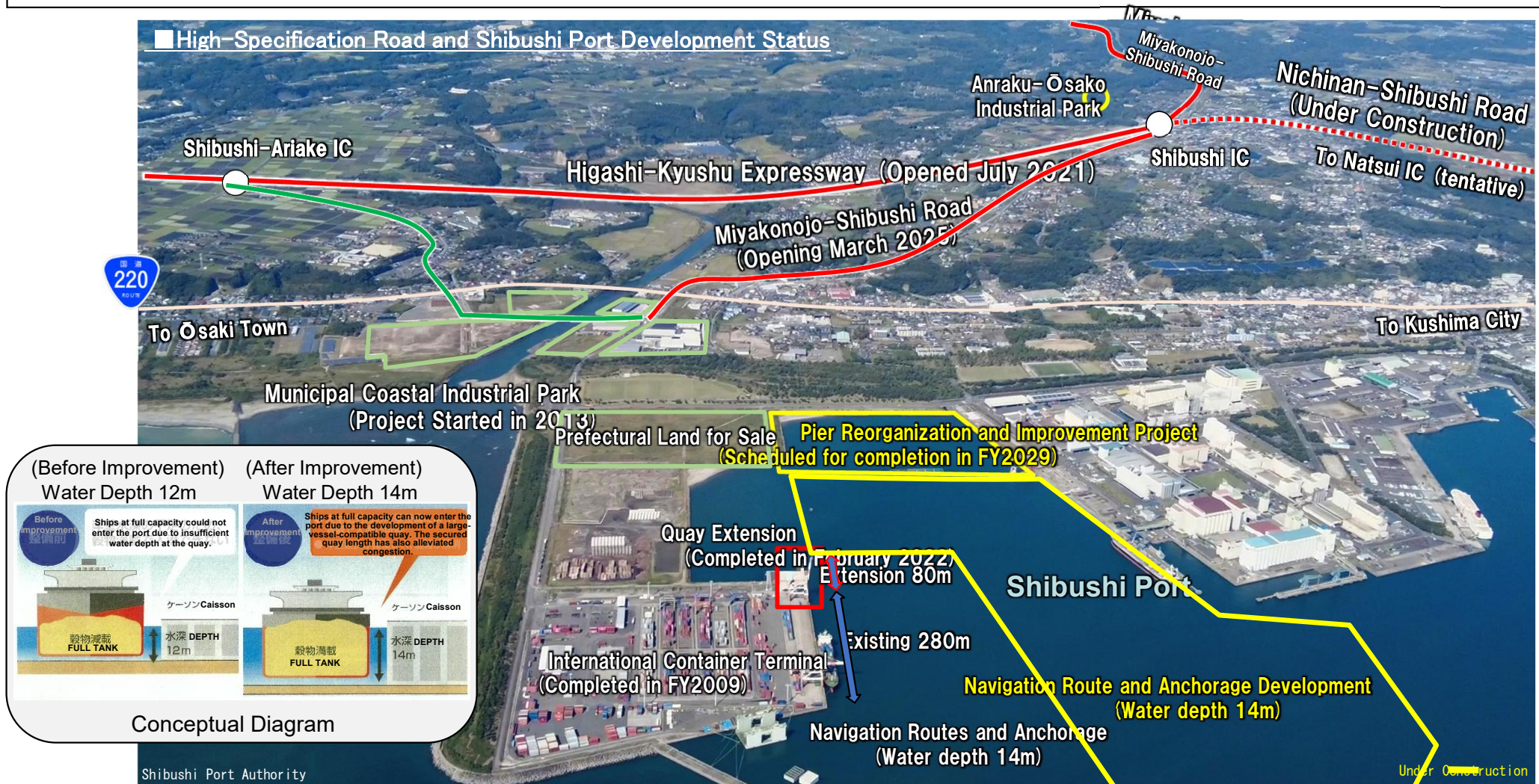


Entry of the world's largest semiconductor manufacturer into the corridor (Opened Feb. 24, 2024)



Integration of High-Specification Roads and International Logistics Hub Ports

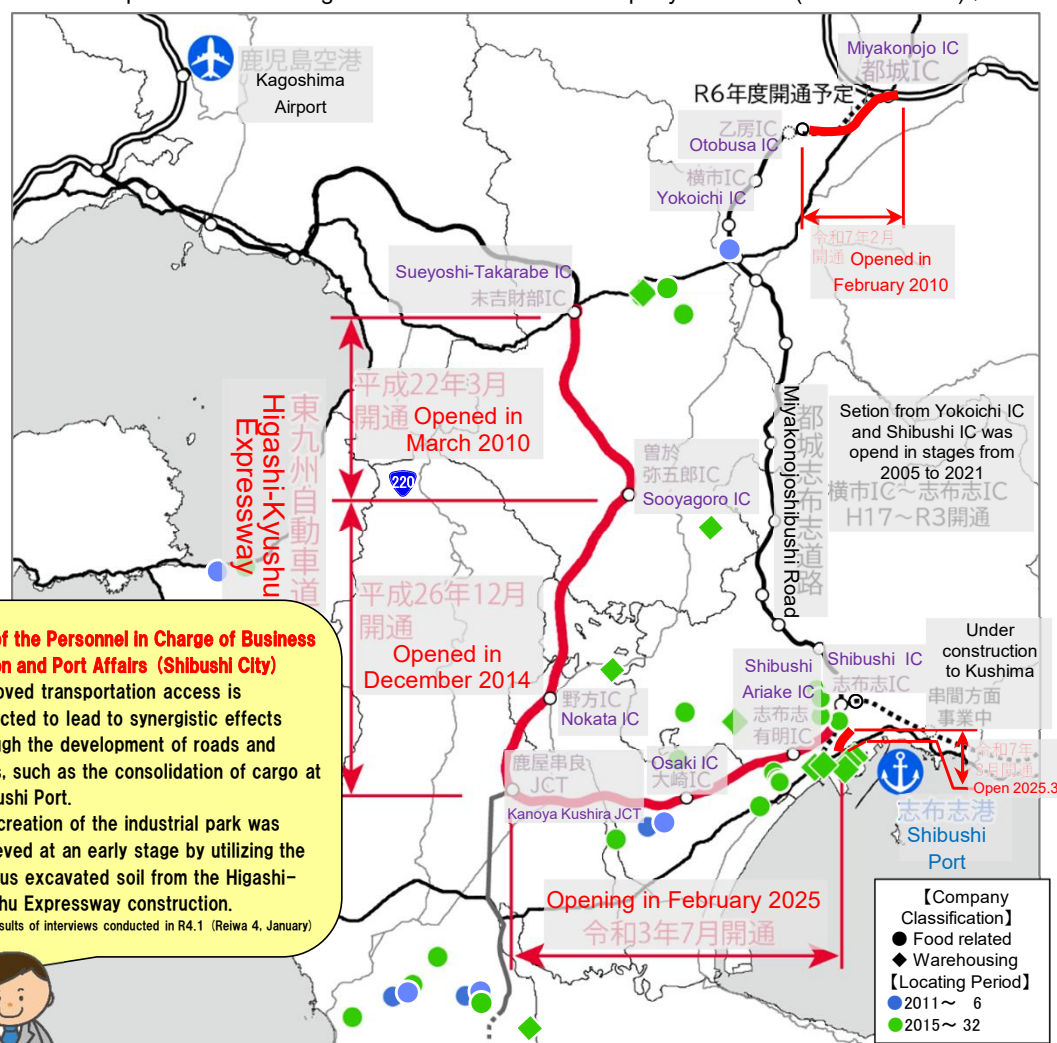
- In the Osumi region, integrated land-sea development is being promoted, including the Higashi-Kyushu Expressway, Shibushi Port, and industrial parks
- The Higashi-Kyushu Expressway opened from Shibushi City to Kanoya City in July 2021, and the Miyakonojo-Shibushi Road opened in its entirety in March 2025. Forming a high-standard road network connecting the Osumi region with areas both within and outside the prefecture. At Shibushi Port, quay extension was completed in February 2022, and port improvements are progressing, including the docks reorganization and improvement project scheduled for completion in fiscal year 2029.
- Companies are moving into industrial parks along the route, and corporate location is on the rise.
- Furthermore, the extension of the high-standard road toward Kushima City in Miyazaki Prefecture is expected to revitalize regional industries.



Support for Vitalization of Regional Key Industries through the Collaboration of High-Standard Roads and Shibushi Port

- The Osumi region, after the announcement of the opening of the Higashi-Kyushu Expressway in fiscal year 2014 and the prospect of the opening to Shibushi, the number of company locations and the volume of cargo handled related to food products increased.
- The sale of industrial parks and the entry of food-related companies are favorable.
- By continuing the collaboration between road and port development and further promoting maintenance, we will continue to support the region's key industries in the future.

■ Development Status of High-Standard Roads and Company Locations (FY 2011–2023)



Voice of the Personnel in Charge of Business Location and Port Affairs (Shibushi City)

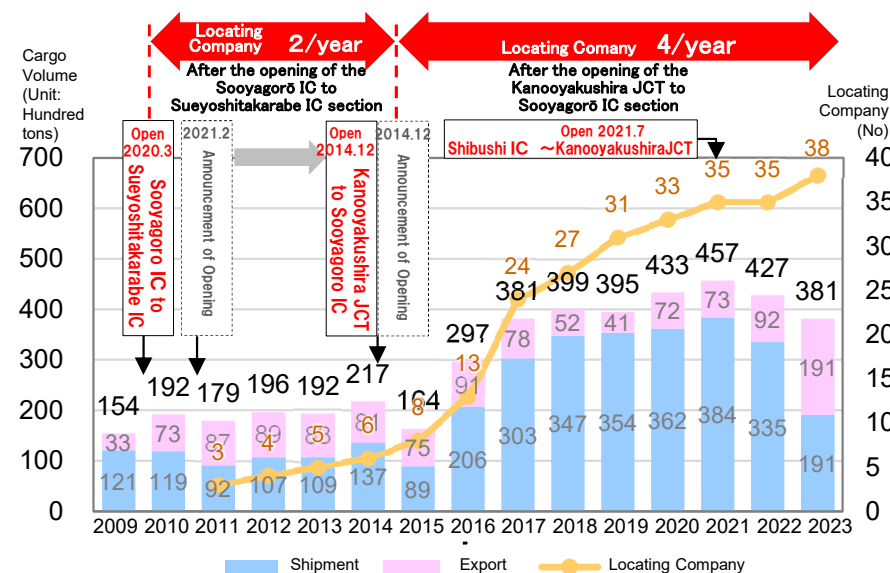
- Improved transportation access is expected to lead to synergistic effects through the development of roads and ports, such as the consolidation of cargo at Shibushi Port.
- The creation of the industrial park was achieved at an early stage by utilizing the surplus excavated soil from the Higashi-Kyushu Expressway construction.

Source: Results of interviews conducted in R4.1 (Reiwa 4, January)



Sauce : HP of Kagoshima Prefecture (Location Agreement)

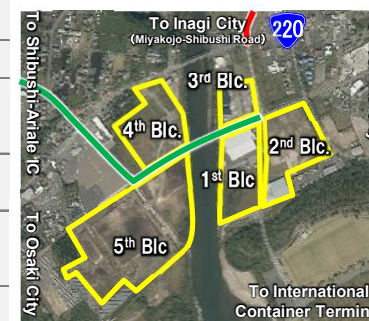
■ The number of companies located and the volume of food-related cargo handled at Shibushi Port



Sauce : Port Statistics、HP of Kagoshima Prefecture (Locating Agreement)

■ Status of the City's Portside Industrial Park

Industrial Block	Area	Classification of Locating Companies	Location Agreement	Operation Start
1st Block	3.3 ha	Feed/Fodder, Food Warehouse, Heating/Processing, Freezing, Refrigerated Warehouse	Oct. 2017	Sep. 2019
2nd Block	3.6 ha	Feed/Fodder, Container Cargo, etc. Warehouse	May 2017	Mar. 2020
3rd Block	1.8 ha	Container Cargo, etc. Warehouse, Recycling Facility	Nov. 2018	Oct. 2021
4th Block	3.3 ha	Wood Processing Plant, Biomass Power Plant	Mar. 2024	-
5th Block	8.8 ha		Feb. 2020	-



Sauce Shibushi City HP