

SPATIAL PLANNING PLATFORM EXPERIENCE of MALAYSIA



INTRODUCTION



MALAYSIA



Total Size : **330,252** KM²

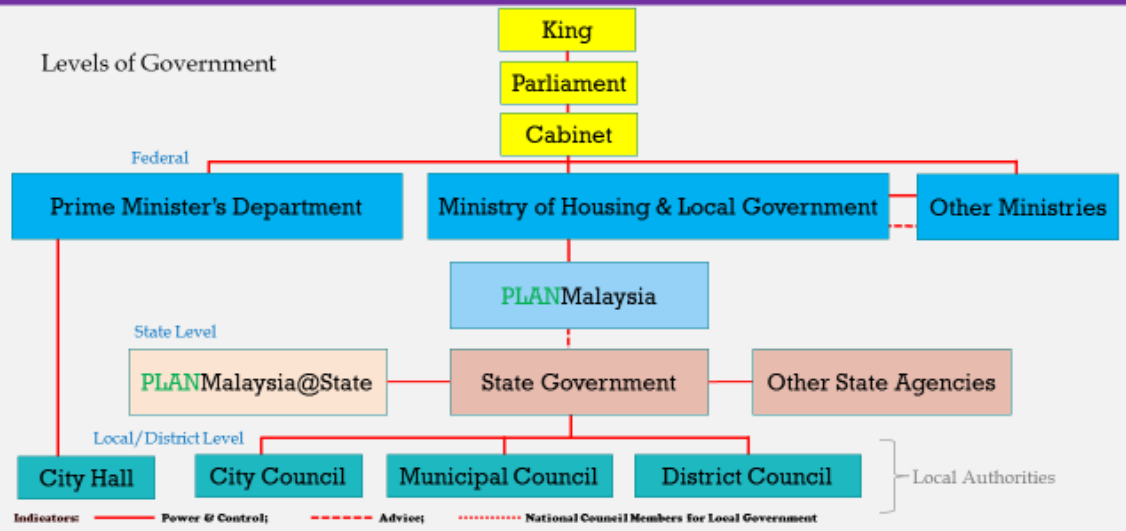
Consist of : **13** States & 3 Federal Territories

Average Annual Population Growth
Rate 2015-2040 : **1.67%**



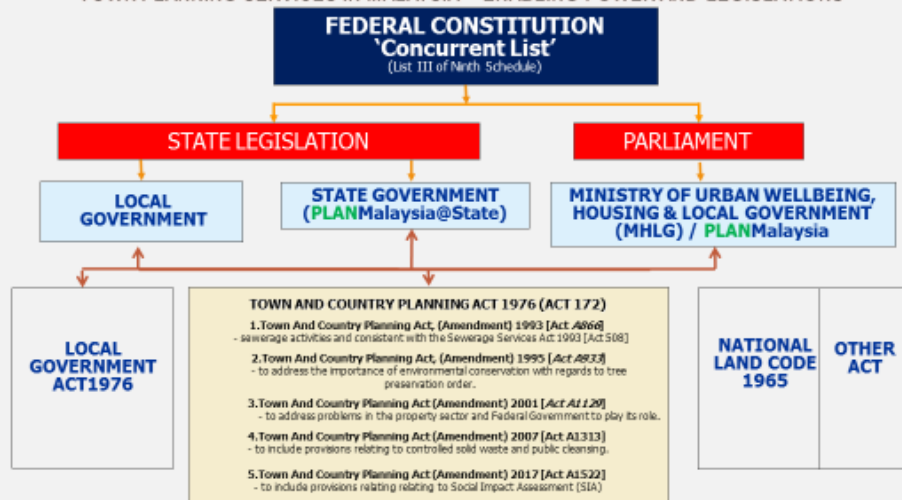
	2015	2020	2025	2040
Population in Malaysia	31.4 Million	33.8 Million	36.7 Million	46.1 Million
Urban Population	74.3%	77.0%	79.6%	<85.0%

GOVERNMENT STRUCTURE IN MALAYSIA



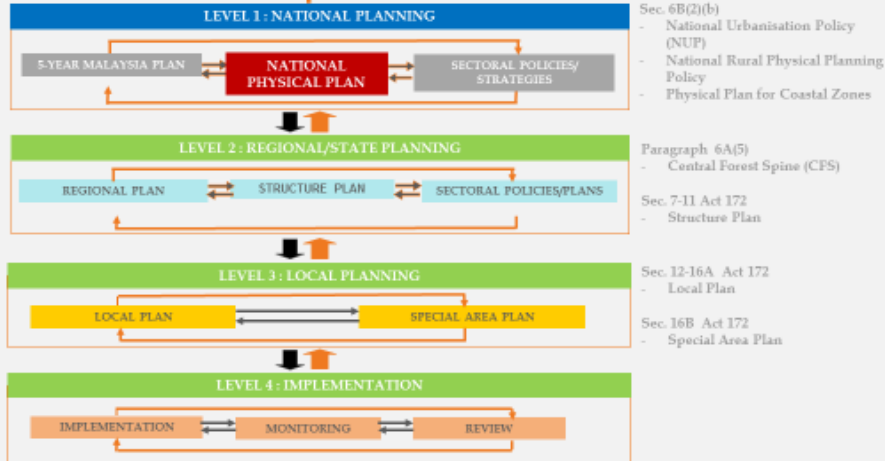
NATIONAL DEVELOPMENT PLANNING FRAMEWORK

TOWN PLANNING SERVICES IN MALAYSIA – ENABLING POWER AND LEGISLATIONS



NATIONAL DEVELOPMENT PLANNING FRAMEWORK

NATIONAL POLICIES (Vision 2020, 5-year Malaysia Plan, TN50 and other related policies)



EVOLUTION OF NATIONAL PHYSICAL PLAN (NPP)



FOCUS : TOWARDS A DEVELOPED NATION BY 2020

NPP
Coverage Area:
 Peninsular Malaysia
Planning Period :
 2020
Implementation Period :
 2006 - 2010



FOCUS : TOWARDS A HIGH-INCOME NATION

NPP 2
Coverage Area:
 Peninsular Malaysia
Planning Period :
 2020
Implementation Period :
 2011-2015



FOCUS : TOWARDS A RESILIENT AND LIVEABLE NATION

NPP 3
Coverage Area:
 Peninsular Malaysia, Sabah & Federal Territory of Labuan.
 For Sarawak, only strategic matters of cross-boundary were taken into account.
Planning Period :
 2040
Implementation Period :
 2016 - 2020

NPP 3 – STUDY APPROACH

NPP 3 takes into account the achievement of NPP-2, future development needs, land development trend, climate change aspects and the 11th Malaysia Plan

- Assessment of the NPP-2 achievement and future needs
- Latest policy and development focus in national and global context
- Climate Change and resilient development aspects
- Latest 11th Malaysia Plan thrusts and framework
- State level planning coordinated with the aspirations and development direction of the national level



TRANSLATION OF NUA & SDG IN NPP 3



CENTRAL FOREST SPINE (CFS), HIGH SPEED RAIL (HSR) & REGIONAL CORRIDORS

Centre Forest Spine

CENTRAL FOREST SPINE CFS

CENTRAL SPINE ROAD (CSR)

SEVEDU JALAN

High Speed Rail

KUALA LUMPUR-SINGAPORE HIGH-SPEED RAIL (HSR)

HSR Facts

Regional Corridors

Regional Corridor

High-Speed Corridor

Other Regional Corridors

STRATEGIC DEVELOPMENT FRAMEWORK – BALANCED DEVELOPMENT

HUB	GATEWAY	CORRIDOR
<p>Main growth areas or urban centre agglomeration that offers job opportunities and economic development</p> <ul style="list-style-type: none"> Established Region Developing Region Highly Potential Region Catalyst Centre 	<p>Main focus for transportation and communication, also has potential as Strategic Development Zone:</p> <ul style="list-style-type: none"> International Point of Entry - Sea International Point of Entry - Air International Point of Entry - Land 	<ul style="list-style-type: none"> Highly Strategic Linking Corridor Strategic Linking Corridor Potential Linking Corridor Radial Corridor

IMPLEMENTATION OF NPP'S POLICIES AT STRUCTURE PLAN LEVEL

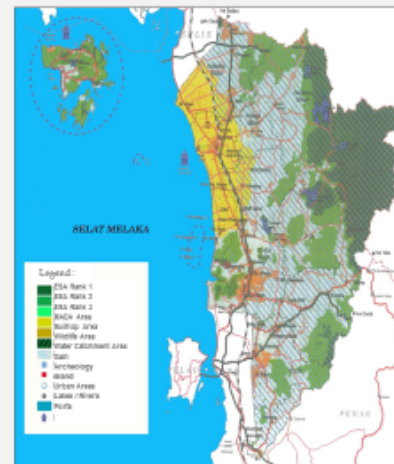
KEY POLICY 10 :
ENVIRONMENTAL SENSITIVE AREAS SUCH AS FOREST RESERVE, WATER CATCHMENT AREAS, WATER BODIES, AREAS OF BIOLOGICAL DIVERSITY AND GEOLOGICAL HERITAGE SITES SHOULD BE MAINTAINED AND PRESERVED

(Kedah State Structure Plan 2002-2020)

Implementation Measures:

- 1 Monitor the impact of development on the ESA especially in areas of coastal erosion, ESA Rank 1 and valuable heritage.
- 2 Management and monitoring of forest reserves maintenance to ensure that there will be continuously conserved.
- 3 Gazettement of forests identified as forest reserves.
- 4 Preservation of forest catchment areas such as the Ulu Muda Forest Reserve, Gunung Inas Forest Reserve, and Padang Terap Forest Reserve.

*Implementing Agencies : Kedah State Planning Committee (SPC), Kedah DTCP, Forestry Department, Wildlife Department, Marine Parks Department, Local Authorities and District Office



Location Plan :
Preservation and Conservation Area

IMPLEMENTATION OF NPP'S POLICIES AT LOCAL PLAN LEVEL

FOREST RESOURCES MANAGEMENT AND DEVELOPMENT PROGRAM

(Kuala Muda Local Plan 2020)

- 1 Justification :
 - a. Ensure that forest are managed sustainably.
 - b. Avoid deforestation more than the allowable limit.
 - c. Evaluation before any license is issued.
 - d. Conserve the FR systematically.
 - e. Involve the public in maintaining the forest for recreation and education.
 - f. Preservation of fruit tree species and herbs often used in traditional medicine.
- 2 Action:
 - a. Measure, check and clean the outer boundary of Forest Reserves.
 - b. Forest inventory before / after felling.
 - c. Forest nurseries.

Implementing agencies : Local Authorities OSC Meeting, District Offices, Forestry Department, Wildlife Department.



Location Plan :
Forest Reserves

Forest Reserve	Area (ha.)
Gunung Jerai	8,676
Sungkup	2,318
Merbok	5,378
Total	14,372

THANK YOU

UN HABITAT
FOR A BETTER URBAN FUTURE



PLAN Malaysia